

Changed Nov 06, 2025 16:05

Reviewed Nov 06, 2025 16:05

Erudus ID 287cc6e14bb74844bd385fc1e9e62711

Version 1.0

Status Published



Et Voila Lentil, Tomato & Thyme Soup 4 x 1kg

Lentil, Tomato & Thyme Soup

PRODUCT DESCRIPTION

Lentil, Tomato & Thyme Soup

Brand	Et Voila Ltd
Manufacturer Product Code	EV121
Product Type	Food
Product Category	Other
Storage Type	Frozen
Erudus ID	287cc6e14bb74844bd385fc1e9e62711
Specification Type	Generic

Inner Component GTIN	5060778192524
Manufacturer Component Code	EV121
Outer Case GTIN	15060778192521

INGREDIENTS

Ingredient Declaration

Water, Diced Tomato (32%), Red Split Lentils (10%), Onion, Vegetable Stock (Water, Onion Powder, Carrot Juice Powder, Tomato Powder, Herb (Lovage), Dried Glucose Syrup, Yeast Extract, Salt, Sugar, Chicory Extract, Rapeseed Oil, Natural Flavouring), Vegetable Oil, Garlic Granules, Thyme (0.11%), Salt, Smoked Paprika, Cracked Black Pepper.

ALLERGENS

Product Contains:

Celery/Celeriac	No
Cereals Containing Gluten	No
Barley	No
Oats	No
Rye	No
Wheat (including Spelt and Khorasan)	No
Crustacea	No
Eggs	No
Fish	No
Lupin	No
Milk	No
Molluscs	No

Mustard	No
Nuts (Tree)	No
Almond nuts	No
Brazil nuts	No
Cashew nuts	No
Hazelnuts	No
Macadamia (Queensland) nuts	No
Pecan nuts	No
Pistachio nuts	No
Walnuts	No
Peanuts	No
Sesame Seeds	No
Soybeans	No
Sulphur Dioxide and Sulphites	No

Additional Allergen Information

Allergens handled on site: Milk, Mustard, Soybeans, Cereal containing Gluten(Barley) and Sulphites.

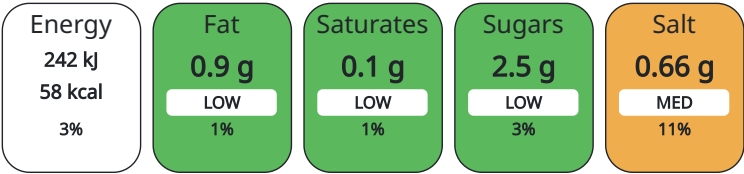
SUPPLEMENTARY INGREDIENT INFORMATION

Palm Oil	No
GM Protein/DNA	No

Artificial Preservatives	No
Artificial Sweeteners	No

NUTRITIONAL
INFORMATION AS
SOLD

Each 100g/ml portion contains:



of your reference intake.

Typical values per 100g/ml : Energy 58kcal / 242kJ

Nutrient	per 100g	RI per 100g	per 100g serving	RI per 100g serving
Energy (kJ)	242 kJ	3%	242	3%
Energy (kcal)	58 kcal	3%	58	3%
Fat	0.9 g	1%	0.9 g	1%
of which Saturates	0.1 g	1%	0.1 g	1%
of which Mono-unsaturates	< 0.1 g		0.1 g	
of which Polyunsaturates	< 0.1 g		0.1 g	
Carbohydrate	9.3 g	4%	9.3 g	4%
of which Sugars	2.5 g	3%	2.5 g	3%
Fibre	< 0.5 g		0.5 g	
Protein	3.2 g	6%	3.2 g	6%
Salt	0.66 g	11%	0.66 g	11%
Serving Size	100 g			

HANDLING &
STORAGE
INFORMATION

Directions For Use
Ensure product is pipping hot before consuming.

Storage Instructions
Frozen Storage. Once defrost, keep chilled and use within 14 days.

Storage Instructions After Opening
Once opened, keep chilled, use within 3 days and by the date shown on label.

Shelf Life from Time of Production	365 Days
Shelf Life From Opening	3 Days
Shelf Life Once Defrosted	14 Days

ACCREDITATIONS/
CERTIFICATIONS/
ASSURANCE
SCHEMES
ORIGIN

SALSA (Safe & Local Supplier Approval)	
Product Country of Origin	United Kingdom
Origin of the Primary Ingredient	Not Applicable

PRODUCT
CHARACTERISTICS

Standards Testing					
Do you undertake trend analysis of microbiological results?		Yes	Is shelf life testing undertaken?		
			Yes		
Microbiological Standards					
Organism	Description	Frequency	Target	Maximum	Sample (g or ml)
Bacillus Cereus (cfu/g or ml)		Occasionally	<20	100	100

	Organism		Description	Frequency	Target	Maximum	Sample (g or ml)
	E. Coli (cfu/g or ml)			Occasionally	<10	100	100
	Listeria SPP (cfu/g or ml)			Occasionally	<0	0	100
	Salmonella (cfu/g or ml)			Occasionally	<0	0	100
	Yeast (cfu/g or ml)			Occasionally	<100	500	100
	Moulds (cfu/g or ml)			Occasionally	<100	500	100
Analytical Standards							
	Test		Description	Frequency	Target	Range	Sample (g or ml)
	pH			Every Batch	<4.2	2.8 to 4.2	100
CONFIGURATION	Case Configuration			Inner Pack Configuration			
PRODUCT WEIGHTS	Variable Inner Components in Outer Case		Yes				
	Total Quantity of Inner Components in Outer Case		4 Units				
	Is the Outer Case Splittable?		Yes				
	Inner Component						
	Inner Component Weight		1 kg				
	Inner Component Volume		4 ml				
PRODUCT DIMENSIONS	Net Drained Weight		1 kg				
	Outer Case						
	Outer Case Gross Weight		4.25 kg				
	Outer Case Net Weight		4 kg				
	Inner Component						
	Inner Component Depth		200 mm				
PALLET INFORMATION	Inner Component Width		250 mm				
	Inner Component Height		5 mm				
	Outer Case						
	Outer Case Depth		350 mm				
	Outer Case Width		320 mm				
	Outer Case Height		68 mm				
PACKAGING	Quantity of Cases Per Pallet Layer		6 Cases	Pallet Type		Euro Pallet	
	Quantity of Layers Per Pallet		25 Layers	Pallet Height		1.54 MTR	
	Quantity of Cases Per Pallet		150 Cases	Pallet Gross Weight		620 kg	
OTHER INFORMATION	Inner Component Packaging						
	Type	Materials	Weight	Recycled Material %	Recyclable	Returnable	Composite
	Bag	Plastic / PE (Polyethylene)	13 g				
	Outer Case Packaging						
	Type	Materials	Weight	Recycled Material %	Recyclable	Returnable	Composite
	Box	Paper/Cardboard / Cardboard	34 g		Yes	No	No
	Shrink Wrap	Plastic	10 g				

CONTACT
INFORMATION

Address
Et Voila Ltd
1st Floor Chancery Lane
Retford
Nottinghamshire
DN22 6DF
United Kingdom

P: (Phone) 07496118569

Complaints Contact
Agnieszka
Quality Technician
qa@etvoila-fs.co.uk

P: (Phone) 07496118569

Technical Contact
Roxana Ionescu
Quality Manager
roxanna@etvoila-fs.co.uk

P: (Phone) 07496118569

Commercial Contact
Roxana Ionescu
Factory manager
qc@etvoila-fs.co.uk

P: (Phone) 07496118569

The information on the [Erudus System](#) has been supplied by the manufacturers of the products and, whilst the owners of the Erudus System take steps to ensure the information is regularly updated, they give no warranty and no guarantee that the information is accurate. Product information and ingredients may change, please always read product labels carefully in addition to using the information provided by Erudus.

We do not accept liability for any inaccuracies or incorrect information contained on this site.
Please visit <http://www.erudus.com/terms-and-conditions> for full terms and conditions.