

Et Voila Red Thai Chicken Soup 4 x 1kg

Red Thai Chicken Soup

PRODUCT DESCRIPTION

Red Thai Chicken Soup

Manufacturer Product Code	EV115
Product Type	Food
Product Category	Other
Storage Type	Frozen
Erudus ID	aa1d314695da42d79611cf461d00a48a
Specification Type	Generic

Inner Component GTIN	5060778192463
Manufacturer Component Code	EV115
Outer Case GTIN	15060778192460

INGREDIENTS

Ingredient Declaration
Water, Chicken (19.36%), Onion, Butternut Squash, Sweet Potato, Bamboo Shoots, Coconut Cream, Red Pepper, Tomato Paste, Vegetable Stock (Water, Onion Powder, Carrot Juice Powder, Tomato Powder, Herb(Lovage), Dried Glucose Syrup, Yeast Extracts, Salt, Sugar, Chicory Extract, Rapeseed Oil, Natural Flavouring), Rapeseed Oil, Modified Maize Starch, Lemon Juice, Ground Cumin, Garlic Granules, Ginger Powder, Coriander Leaf, Basil Leaves, Hot Chilli Powder.

ALLERGENS

Product Contains:			
Celery/Celeriac	No	Mustard	No
Cereals Containing Gluten	No	Nuts (Tree)	No
Barley	No	Almond nuts	No
Oats	No	Brazil nuts	No
Rye	No	Cashew nuts	No
Wheat (including Spelt and Khorasan)	No	Hazelnuts	No
Crustacea	No	Macadamia (Queensland) nuts	No
Eggs	No	Pecan nuts	No
Fish	No	Pistachio nuts	No
Lupin	No	Walnuts	No
Milk	No	Peanuts	No
Molluscs	No	Sesame Seeds	No
		Soybeans	No
		Sulphur Dioxide and Sulphites	No

Additional Allergen Information
Allergens handled on site: Milk, Mustard, Soybeans, Cereal containing Gluten(Barley) and Sulphites.

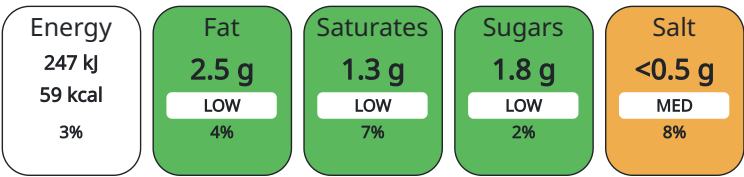
SUPPLEMENTARY INGREDIENT INFORMATION

Palm Oil	No
GM Protein/DNA	No

Artificial Preservatives	No
Artificial Sweeteners	No

NUTRITIONAL
INFORMATION AS
SOLD

Each 100g/ml portion contains:



of your reference intake.

Typical values per 100g/ml : Energy 59kcal / 247kJ

Nutrient	per 100g	RI per 100g	per 100g serving	RI per 100g serving
Energy (kJ)	247 kJ	3%	247	3%
Energy (kcal)	59 kcal	3%	59	3%
Fat	2.5 g	4%	2.5 g	4%
of which Saturates	1.3 g	7%	1.3 g	7%
of which Mono-unsaturates	< 0.1 g		0.1 g	
of which Polyunsaturates	< 0.1 g		0.1 g	
Carbohydrate	4.3 g	2%	4.3 g	2%
of which Sugars	1.8 g	2%	1.8 g	2%
Fibre	< 0.5 g		0.5 g	
Protein	4.8 g	10%	4.8 g	10%
Salt	0.46 g	8%	0.46 g	8%
Serving Size	100 g			

HANDLING &
STORAGE
INFORMATION

Directions For Use
Ensure product is pipping hot before consuming.

Storage Instructions
Frozen Storage. Once defrost, keep chilled and use within 14 days.

Storage Instructions After Opening
Once opened, keep chilled, use within 3 days and by the date shown on label.

Shelf Life from Time of Production	365 Days
Shelf Life From Opening	3 Days
Shelf Life Once Defrosted	14 Days

ACCREDITATIONS/
CERTIFICATIONS/
ASSURANCE
SCHEMES
ORIGIN

SALSA (Safe & Local Supplier Approval)	
Product Country of Origin	United Kingdom
Origin of the Primary Ingredient	Not Applicable

PRODUCT
CHARACTERISTICS

Standards Testing					
Do you undertake trend analysis of microbiological results?		Yes	Is shelf life testing undertaken?		Yes
Microbiological Standards					
Organism	Description	Frequency	Target	Maximum	Sample (g or ml)
Bacillus Cereus (cfu/g or ml)		Occasionally	<20	100	100

	Organism	Description	Frequency	Target	Maximum	Sample (g or ml)	
	E. Coli (cfu/g or ml)		Occasionally	<10	100	100	
	Listeria SPP (cfu/g or ml)		Occasionally	<0	0	100	
	Salmonella (cfu/g or ml)		Occasionally	<0	0	100	
	Yeast (cfu/g or ml)		Occasionally	<100	500	100	
	Moulds (cfu/g or ml)		Occasionally	<100	500	100	
Analytical Standards							
	Test	Description	Frequency	Target	Range	Sample (g or ml)	
	pH		Every Batch	<4.2	2.8 to 4.2	100	
CONFIGURATION	Case Configuration			Inner Pack Configuration			
	Variable Inner Components in Outer Case	Yes					
	Total Quantity of Inner Components in Outer Case	4 Units					
	Is the Outer Case Splittable?	Yes					
PRODUCT WEIGHTS	Inner Component						
	Inner Component Weight	1 kg					
	Inner Component Volume	4 ml					
	Net Drained Weight	1 kg					
	Outer Case						
	Outer Case Gross Weight	4.25 kg					
	Outer Case Net Weight	4 kg					
PRODUCT DIMENSIONS	Inner Component						
	Inner Component Depth	200 mm					
	Inner Component Width	250 mm					
	Inner Component Height	5 mm					
	Outer Case						
	Outer Case Depth	350 mm					
	Outer Case Width	320 mm					
	Outer Case Height	68 mm					
PALLET INFORMATION	Quantity of Cases Per Pallet Layer	6 Cases	Pallet Type		Euro Pallet		
	Quantity of Layers Per Pallet	25 Layers	Pallet Height		1.54 MTR		
	Quantity of Cases Per Pallet	150 Cases	Pallet Gross Weight		620 kg		
PACKAGING	Inner Component Packaging						
	Type	Materials	Weight	Recycled Material %	Recyclable	Returnable	Composite
	Bag	Plastic / PE (Polyethylene)	13 g				
	Outer Case Packaging						
	Type	Materials	Weight	Recycled Material %	Recyclable	Returnable	Composite
	Box	Paper/Cardboard / Cardboard	34 g		Yes	No	No
	Shrink Wrap	Plastic	10 g				
OTHER INFORMATION							

CONTACT
INFORMATION

Address

Et Voila Ltd
1st Floor Chancery Lane
DN22 6DF
Retford
Nottinghamshire
United Kingdom

roxanna@etvoila-fs.co.uk
07496118569

Technical

Sylwia Purgacz
qam@etvoila-fs.co.uk
07415 873789
Quality Manager

Commercial

Roxana Ionescu
roxanna@etvoila-fs.co.uk
07496118569
Site manager

Complaints

Agnieszka
qa@etvoila-fs.co.uk
07496118569
Quality Technician

The information on the [Erudus System](#) has been supplied by the manufacturers of the products and, whilst the owners of the Erudus System take steps to ensure the information is regularly updated, they give no warranty and no guarantee that the information is accurate. Product information and ingredients may change, please always read product labels carefully in addition to using the information provided by Erudus.

We do not accept liability for any inaccuracies or incorrect information contained on this site.
Please visit <http://www.erudus.com/terms-and-conditions> for full terms and conditions.