

Changed Oct 31, 2025 16:15

Reviewed Oct 31, 2025 16:15

Erudus ID e5d5c4cd40524d2099f0adbfb4b85002

Version 7.0

Status Published

7415 64949

# Brimble's Chocolate Ice Cream 6 x 4 Litre

Chocolate Ice Cream

## PRODUCT DESCRIPTION

Chocolate ice cream

Brand	Brimble's
Manufacturer Product Code	BCHOC4
Product Type	Food
Product Category	Ice Cream
Storage Type	Frozen
Erudus ID	e5d5c4cd40524d2099f0adbfb4b85002
Specification Type	Dairy



Inner Component GTIN	5060012790882
Outer Case GTIN	5060012790875



## INGREDIENTS

### Ingredient Declaration

Water, Sugar, **MILK** solids (10%), Vegetable oil (palm), Dark chocolate (2%) (Cocoa mass, sugar, cocoa butter, emulsifier **SOYA** lecithin, Natural vanilla flavouring), Whey powder (**MILK**) (2%), Fat-reduced cocoa powder, Humectant: Vegetable glycerine, Emulsifier: Mono- and Diglycerides of Fatty Acids, Stabilisers: Guar Gum, Carrageenan, Locust Bean Gum

### Ingredient Statements

For allergens, please see ingredients in BOLD.

ALLERGENS

<i>Product Contains:</i>			
Celery/Celeriac	No	Mustard	No
Cereals Containing Gluten	No	Nuts (Tree)	No
Barley	No	Almond nuts	No
Oats	No	Brazil nuts	No
Rye	No	Cashew nuts	No
Wheat (including Spelt and Khorasan)	No	Hazelnuts	No
Crustacea	No	Macadamia (Queensland) nuts	No
Eggs	No	Pecan nuts	No
Fish	No	Pistachio nuts	No
Lupin	No	Walnuts	No
Milk	Yes	Peanuts	No
Molluscs	No	Sesame Seeds	No
		Soybeans	Yes
		Sulphur Dioxide and Sulphites	No

SUPPLEMENTARY  
INGREDIENT  
INFORMATION

Palm Oil	Yes
Hydrogenated Vegetable Oil/Fat	No
GM Protein/DNA	No

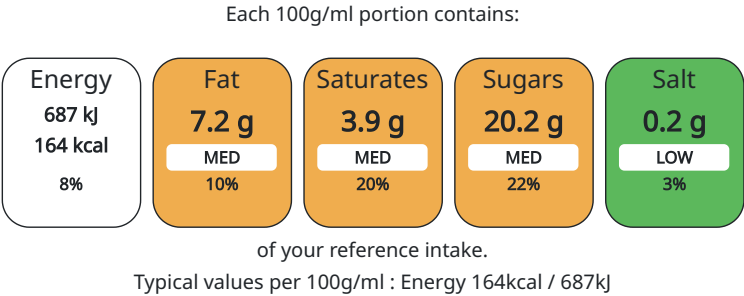
ADDITIVES

<i>Product Contains:</i>			
Artificial Antioxidants	No	Artificial Flavourings	No
Artificial Colours	No	Artificial Preservatives	No
Artificial Flavour Enhancers	No	Artificial Sweeteners	No

DIET SUITABILITY

Vegetarian Diet	Suitable for	Halal Diet	Certified
-----------------	--------------	------------	-----------

NUTRITIONAL  
INFORMATION AS  
SOLD



Nutrient	per 100g	RI per 100g
Energy (kJ)	687 kJ	8%
Energy (kcal)	164 kcal	8%
Fat	7.2 g	10%
of which Saturates	3.9 g	20%
Carbohydrate	20.8 g	8%
of which Sugars	20.2 g	22%
Protein	3.9 g	8%
Salt	0.2 g	3%

Source of Nutritional Information	Calculation based on known values of ingredients
HFSS Status	Yes
HFSS Score	7

HFSS (HIGH IN  
FAT, SALT AND  
SUGAR)

HANDLING &  
STORAGE  
INFORMATION

Directions For Use

Keep frozen

Storage Instructions

Store Below -18 C

Storage Instructions After Opening

Do not refreeze once defrosted.

Shelf Life from Time of Production730 Days

ACCREDITATIONS/  
CERTIFICATIONS/  
ASSURANCE  
SCHEMES  
ORIGIN

B Corp Certification

BRCGS Certified

BRCGS Start!

Sedex

Product Country of OriginUnited Kingdom

Origin of the Primary IngredientUnited Kingdom

PRODUCT  
CHARACTERISTICS

Standards Testing

Do you undertake trend analysis of microbiological results?No

Is shelf life testing undertaken?Yes

Commercially SterileNo

Microbiological Standards

Organism	Description	Frequency	Target	Maximum	Sample (g or ml)
Enterobacteriaceae (cfu/g or ml)		Annually	<100	10000	1
E. Coli (cfu/g or ml)		Occasionally	<20	100	1
Staphylococcus Aureus (cfu/g or ml)		Annually	<20	100	1
Salmonella (cfu/g or ml)		Annually	=0	0	25
Listeria SPP (cfu/g or ml)		Annually	=0	0	25
Aerobic Colony Count (ACC) (cfu/g or ml)		Annually	<10000	50000	1
Bacillus Cereus (cfu/g or ml)		Annually	<1000	100000	1

SUPPLEMENTARY INFORMATION

Milk TypeCowPasteurisedYes

ORGANOLEPTICS

Appearance

Pale brown in colour.

Aroma

Typical of chocolate.

Taste

Creamy with sweetness from chocolate.

Texture

Smooth and creamy mouthfeel.

HAZARD CONTROLS

Metal DetectionYesFiltersYes

CONFIGURATION

Case ConfigurationInner Pack Configuration

Variable Inner Components in Outer CaseNo

Total Quantity of Inner Components in Outer Case6 Units

Is the Outer Case Splittable?No

PRODUCT WEIGHTS

Inner Component	
Variable Weight Consumer Item	Yes
Inner Component Volume	4 litre
e mark	No
Outer Case	
Outer Case Gross Weight	10.48 kg
Outer Case Net Weight	9.46 kg

PRODUCT DIMENSIONS

Inner Component	
Inner Component Depth	227 mm
Inner Component Width	165 mm
Inner Component Height	158 mm
Outer Case	
Outer Case Depth	505 mm
Outer Case Width	230 mm
Outer Case Height	291 mm

PALLET INFORMATION

Quantity of Cases Per Pallet Layer	10 Cases	Pallet Type	UK Standard Pallet
Quantity of Layers Per Pallet	5 Layers	Pallet Height	1.7 MTR
Quantity of Cases Per Pallet	50 Cases		

PACKAGING

Inner Component Packaging						
Type	Materials	Weight	Recycled Material %	Recyclable	Returnable	Composite
Tub	Plastic / PP (Polypropylene)	93 g	0 %	Yes	No	No
Lid	Plastic / PP (Polypropylene)	29 g	0 %	Yes	No	No
Label	Paper/Cardboard / Paper	2 g		Yes	No	No
Outer Case Packaging						
Type	Materials	Weight	Recycled Material %	Recyclable	Returnable	Composite
Case	Paper/Cardboard / Corrugated	281 g		Yes	No	No
Transport Packaging						
Type	Materials	Weight	Recycled Material %	Recyclable	Returnable	Composite
Pallet Wrap	Plastic / PE (Polyethylene)	250 g	0 %	No	No	No
Pallet	Wood	25000 g		Yes	No	No

OTHER INFORMATION  
CONTACT INFORMATION

		Identification/Health Marks	GB TB 013
<b>Address</b> Marshfield Farm Ice Cream Limited Marshfield SN14 8LE Nr Bath Wiltshire United Kingdom  katie@marshfield-icecream.co.uk 01225 891221		<b>Technical</b> Technical Team technical@marshfield-icecream.co.uk 01225 891221 Technical Team  <b>Complaints</b> Technical Team technical@marshfield-icecream.co.uk 01225 891221 Technical Team	

The information on the [Erudus System](#) has been supplied by the manufacturers of the products and, whilst the owners of the Erudus System take steps to ensure the information is regularly updated, they give no warranty and no guarantee that the information is accurate. Product information and ingredients may change, please always read product labels carefully in addition to using the information provided by Erudus.

We do not accept liability for any inaccuracies or incorrect information contained on this site.  
Please visit <http://www.erudus.com/terms-and-conditions> for full terms and conditions.