

Korker Original Pork Chipolata Sausages 8x1kg Case

Pork Chipolata Kg 8x1kg

PRODUCT DESCRIPTION

Korker Original Pork Chipolata Sausages 8x1kg Case

| | |
|---------------------------|----------------------------------|
| Brand | Korker Sausages Ltd |
| Manufacturer Product Code | CHIP/1KG/CASE |
| Product Type | Food |
| Product Category | Meatballs, Burgers & Sausages |
| Storage Type | Frozen |
| Erudus ID | 7c428d8eb3af487c9fc5462313348ab9 |
| Specification Type | Meat |

Inner Component GTIN 5023514768247



INGREDIENTS

Ingredient Declaration

Pork (60%) Water, Rusk [WHEAT Flour (Contains Calcium Carbonate, Iron, Niacin, Folic Acid, Thiamin), Water, Salt (Contains E535 anticaking agent), Yeast], Pork Fat, Salt, Dried Sage, White Pepper, Dried Ginger, Black Pepper, Preservative (Sodium SULPHITE E221), Stabiliser (E450, Salt). Filled into a UK edible beef protein casing [Beef Protein, Stabiliser (Cellulose)].

ALLERGENS

Product Contains:

| | | | |
|--------------------------------------|-----|-------------------------------|-----|
| Celery/Celeriac | No | Mustard | No |
| Cereals Containing Gluten | Yes | Nuts (Tree) | No |
| Barley | No | Almond nuts | No |
| Oats | No | Brazil nuts | No |
| Rye | No | Cashew nuts | No |
| Wheat (including Spelt and Khorasan) | Yes | Hazelnuts | No |
| Crustacea | No | Macadamia (Queensland) nuts | No |
| Eggs | No | Pecan nuts | No |
| Fish | No | Pistachio nuts | No |
| Lupin | No | Walnuts | No |
| Milk | No | Peanuts | No |
| Molluscs | No | Sesame Seeds | No |
| | | Soybeans | No |
| | | Sulphur Dioxide and Sulphites | Yes |

SUPPLEMENTARY INGREDIENT INFORMATION

| | |
|--------------------------------|----|
| Palm Oil | No |
| Hydrogenated Vegetable Oil/Fat | No |
| GM Protein/DNA | No |

ADDITIVES

Product Contains:

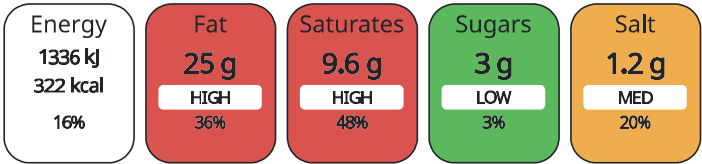
| | | | |
|------------------------------|-----|--------------------------|-----|
| Artificial Antioxidants | Yes | Artificial Flavourings | Yes |
| Artificial Colours | No | Artificial Preservatives | Yes |
| Artificial Flavour Enhancers | Yes | Artificial Sweeteners | No |

DIET SUITABILITY

| | | | |
|------------|----|-------------|----|
| Halal Diet | No | Kosher Diet | No |
|------------|----|-------------|----|

NUTRITIONAL
INFORMATION AS
SOLD

Each 100g/ml portion contains:



of your reference intake.

Typical values per 100g/ml : Energy 322kcal / 1336kJ

| Nutrient | per 100g | RI per 100g |
|--------------------|----------|-------------|
| Energy (kJ) | 1336 kJ | 16% |
| Energy (kcal) | 322 kcal | 16% |
| Fat | 25 g | 36% |
| of which Saturates | 9.6 g | 48% |
| Carbohydrate | 12 g | 5% |
| of which Sugars | 3 g | 3% |
| Fibre | 1.3 g | |
| Protein | 11 g | 22% |
| Salt | 1.2 g | 20% |

HANDLING &
STORAGE
INFORMATION

Directions For Use

For best results cook from frozen. Grill sausages for approx. 20 mins, turning frequently until internal temperature of 75 degrees C is achieved. Alternatively shallow fry or oven bake. Food safety statement: This is a raw product cook until piping hot.

Storage Instructions

Store at -18 degrees C or below. Once defrosted do not refreeze.

| | |
|------------------------------------|----------|
| Shelf Life from Time of Production | 365 Days |
|------------------------------------|----------|

ORIGIN

| | |
|----------------------------------|-------------------------|
| Product Country of Origin | United Kingdom |
| Additional Origin Details | N/A |
| Origin of the Primary Ingredient | Belgium, United Kingdom |

PRODUCT
CHARACTERISTICS

| | | |
|---|----|--------------------------------------|
| Standards Testing | | |
| Do you undertake trend analysis of microbiological results? | No | Is shelf life testing undertaken? No |

| Microbiological Standards | | | | | |
|----------------------------------|-------------|----------------|--------|---------|------------------|
| Organism | Description | Frequency | Target | Maximum | Sample (g or ml) |
| Bacillus Cereus (cfu/g or ml) | | Every 6 months | <20 | 20 | 454 |
| E. Coli (cfu/g or ml) | | Every 6 months | <50 | 50 | 454 |
| Enterobacteriaceae (cfu/g or ml) | | Every 6 months | =100 | 100 | 454 |
| Salmonella (cfu/g or ml) | | Every 6 months | =0 | 0 | 454 |

| | | | | | | | |
|--------------------|--|-----------------|---------------------------|---------------------|------------|------------------|-----------|
| | Organism | Description | Frequency | Target | Maximum | Sample (g or ml) | |
| | Aerobic Colony Count (ACC) (cfu/g or ml) | | Every 6 months | <5 | 5 | 454 | |
| CONFIGURATION | Case Configuration | | Inner Pack Configuration | | | | |
| | Total Quantity of Inner Components in Outer Case | 8 Units | Count per Inner Component | | 62 | | |
| | Is the Outer Case Splittable? | Yes | | | | | |
| PRODUCT WEIGHTS | Inner Component | | | | | | |
| | Variable Weight Consumer Item | No | | | | | |
| | Inner Component Weight | 1 kg | | | | | |
| | Inner Component Volume | 0 litre | | | | | |
| PRODUCT DIMENSIONS | Outer Case | | | | | | |
| | Outer Case Gross Weight | 8 kg | | | | | |
| | Outer Case Net Weight | 8 kg | | | | | |
| | Inner Component | | | | | | |
| | Inner Component Depth | 255 mm | | | | | |
| | Inner Component Width | 45 mm | | | | | |
| | Inner Component Height | 290 mm | | | | | |
| PALLET INFORMATION | Outer Case | | | | | | |
| | Outer Case Depth | 445 mm | | | | | |
| | Outer Case Width | 310 mm | | | | | |
| | Outer Case Height | 130 mm | | | | | |
| | Non Palletised | Yes | | | | | |
| | Inner Component Packaging | | | | | | |
| | Type | Materials | Weight | Recycled Material % | Recyclable | Returnable | Composite |
| PACKAGING | Bag | Plastic | 8 g | | | | |
| | Outer Case Packaging | | | | | | |
| | Type | Materials | Weight | Recycled Material % | Recyclable | Returnable | Composite |
| | Case | Paper/Cardboard | 310 g | | | | |
| | Transport Packaging | | | | | | |
| | Type | Materials | Weight | Recycled Material % | Recyclable | Returnable | Composite |
| | Other | Plastic | 500 g | | | Yes | |
| OTHER INFORMATION | | | | | | | |

CONTACT
INFORMATION

Address

Korker Sausages Ltd
Branns Drive
High Street
Rolvenden, Kent
TN17 4LN
England

P: (Phone) 01580 241307

Commercial Contact

Ed Hoad
Director
enquiries@korker-sausages.co.uk

P: (Phone) 01580 241307

The information on the [Erudus System](#) has been supplied by the manufacturers of the products and, whilst the owners of the Erudus System take steps to ensure the information is regularly updated, they give no warranty and no guarantee that the information is accurate. Product information and ingredients may change, please always read product labels carefully in addition to using the information provided by Erudus.

We do not accept liability for any inaccuracies or incorrect information contained on this site.
Please visit <http://www.erudus.com/terms-and-conditions> for full terms and conditions.