

Changed Nov 03, 2025 15:30

Reviewed Nov 03, 2025 15:30

Erudus ID f62f387174f84912ad934ef6fe26b993

Version 2.0

Status Published



Et Voila Tomato & Basil Soup

Tomato And Basil Soup 4 X 1kg

PRODUCT DESCRIPTION

Tomato and Basil soup

Brand	Et Voila Ltd
Manufacturer Product Code	EV107
Product Type	Food
Product Category	Other
Storage Type	Frozen
Erudus ID	f62f387174f84912ad934ef6fe26b993
Specification Type	Generic

Inner Component GTIN	5060778192388
Manufacturer Component Code	EV107
Outer Case GTIN	15060778192385



INGREDIENTS

Ingredient Declaration
Diced Tomato(51%), Water, Tomato Paste, Diced Onion, Sugar, Modified Maize Starch, Salt, White Wine Vinegar, Sunflower Oil, Lemon Juice, Garlic Puree, Basil(0.13), Parsley, Oregano, Black Pepper Ground.

ALLERGENS

<i>Product Contains:</i>			
Celery/Celeriac	No	Mustard	No
Cereals Containing Gluten	No	Nuts (Tree)	No
Barley	No	Almond nuts	No
Oats	No	Brazil nuts	No
Rye	No	Cashew nuts	No
Wheat (including Spelt and Khorasan)	No	Hazelnuts	No
Crustacea	No	Macadamia (Queensland) nuts	No
Eggs	No	Pecan nuts	No
Fish	No	Pistachio nuts	No
Lupin	No	Walnuts	No
Milk	No	Peanuts	No
Molluscs	No	Sesame Seeds	No
		Soybeans	No
		Sulphur Dioxide and Sulphites	No

Additional Allergen Information
Allergens handled on site: Milk, Mustard, Soybeans, Cereal containing Gluten(Barley) and Sulphites.

SUPPLEMENTARY
INGREDIENT
INFORMATION

Palm Oil	No
GM Protein/DNA	No

ADDITIVES

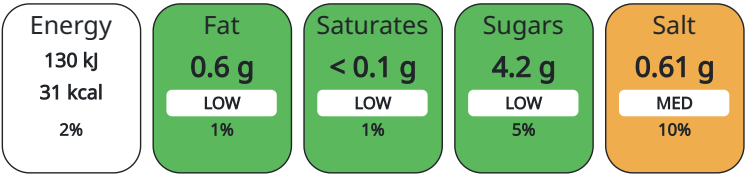
Product Contains:		Artificial Preservatives	No
		Artificial Sweeteners	No

DIET SUITABILITY

Vegan Diet	Suitable for	Vegetarian Diet	Suitable for
------------	--------------	-----------------	--------------

NUTRITIONAL
INFORMATION AS
SOLD

Each 100g/ml portion contains:



of your reference intake.

Typical values per 100g/ml : Energy 31kcal / 130kJ

Nutrient	per 100g	RI per 100g	per 100g serving	RI per 100g serving
Energy (kJ)	130 kJ	2%	130	2%
Energy (kcal)	31 kcal	2%	31	2%
Fat	0.6 g	1%	0.6 g	1%
of which Saturates	< 0.1 g	1%	0.1 g	1%
of which Mono-unsaturates	< 0.1 g		0.1 g	
of which Polyunsaturates	< 0.1 g		0.1 g	
Carbohydrate	5.3 g	2%	5.3 g	2%
of which Sugars	4.2 g	5%	4.2 g	5%
Fibre	< 0.5 g		0.5 g	
Protein	1 g	2%	1 g	2%
Salt	0.61 g	10%	0.61 g	10%

Serving Size	100 g
--------------	-------

HANDLING &
STORAGE
INFORMATION

Directions For Use	Ensure product is pipping hot before consuming.
Storage Instructions	Frozen Storage. Once defrost, keep chilled and use within 14 days.
Storage Instructions After Opening	Once opened, keep chilled, use within 3 days and by the date shown on label.

Shelf Life from Time of Production	365 Days
Shelf Life From Opening	3 Days
Shelf Life Once Defrosted	14 Days

ACCREDITATIONS/
CERTIFICATIONS/
ASSURANCE
SCHEMES
ORIGIN

SALSA (Safe & Local Supplier Approval)	
Product Country of Origin	United Kingdom
Origin of the Primary Ingredient	Not Applicable

PRODUCT
CHARACTERISTICS

Standards Testing

	Do you undertake trend analysis of microbiological results?	Yes	Is shelf life testing undertaken?		Yes		
	Microbiological Standards						
	Organism	Description	Frequency	Target	Maximum	Sample (g or ml)	
	Bacillus Cereus (cfu/g or ml)		Occasionally	<20	100	100	
	E. Coli (cfu/g or ml)		Occasionally	<10	100	100	
	Listeria SPP (cfu/g or ml)		Occasionally	<0	0	100	
	Salmonella (cfu/g or ml)		Occasionally	<0	0	100	
	Yeast (cfu/g or ml)		Occasionally	<100	500	100	
	Moulds (cfu/g or ml)		Occasionally	<100	500	100	
	Analytical Standards						
	Test	Description	Frequency	Target	Range	Sample (g or ml)	
	pH		Every Batch	<4.2	2.8 to 4.2	100	
CONFIGURATION	Case Configuration		Inner Pack Configuration				
	Variable Inner Components in Outer Case	Yes					
	Total Quantity of Inner Components in Outer Case	4 Units					
	Is the Outer Case Splittable?	Yes					
PRODUCT WEIGHTS	Inner Component						
	Inner Component Weight	1 kg					
	Inner Component Volume	4 ml					
	Net Drained Weight	1 kg					
	Outer Case						
	Outer Case Gross Weight	4.25 kg					
	Outer Case Net Weight	4 kg					
PRODUCT DIMENSIONS	Inner Component						
	Inner Component Depth	200 mm					
	Inner Component Width	250 mm					
	Inner Component Height	5 mm					
	Outer Case						
	Outer Case Depth	350 mm					
	Outer Case Width	320 mm					
	Outer Case Height	68 mm					
PALLET INFORMATION	Quantity of Cases Per Pallet Layer	6 Cases	Pallet Type		Euro Pallet		
	Quantity of Layers Per Pallet	25 Layers	Pallet Height		1.54 MTR		
	Quantity of Cases Per Pallet	150 Cases	Pallet Gross Weight		620 kg		
PACKAGING	Inner Component Packaging						
	Type	Materials	Weight	Recycled Material %	Recyclable	Returnable	Composite
	Bag	Plastic / PE (Polyethylene)	13 g				

Outer Case Packaging

Type	Materials	Weight	Recycled Material %	Recyclable	Returnable	Composite
Box	Paper/Cardboard / Cardboard	34 g		Yes	No	No
Shrink Wrap	Plastic	10 g				

OTHER
INFORMATION
CONTACT
INFORMATION

Address	Technical Contact
Et Voila Ltd	Roxana Ionescu
1st Floor Chancery Lane	Quality Manager
Retford	roxanna@etvoila-fs.co.uk
Nottinghamshire	
DN22 6DF	P: (Phone) 07496118569
United Kingdom	
P: (Phone) 07496118569	
Complaints Contact	Commercial Contact
Agnieszka	Roxana Ionescu
Quality Technician	Factory manager
qa@etvoila-fs.co.uk	qc@etvoila-fs.co.uk
P: (Phone) 07496118569	P: (Phone) 07496118569

The information on the [Erudus System](#) has been supplied by the manufacturers of the products and, whilst the owners of the Erudus System take steps to ensure the information is regularly updated, they give no warranty and no guarantee that the information is accurate. Product information and ingredients may change, please always read product labels carefully in addition to using the information provided by Erudus.

We do not accept liability for any inaccuracies or incorrect information contained on this site.
Please visit <http://www.erudus.com/terms-and-conditions> for full terms and conditions.