



**SIMPLY  
CLEVER  
FOOD**

## Madeira Cake Mix 12.5kg

**PRODUCT CODE:** 10000102  
**PACK SIZE:** 12.5kg  
**ISSUE DATE:** 02/12/2025  
**CREATED BY:** JES

# PRODUCT INFORMATION DOCUMENT

## WARRANTY

The intellectual property applied in the development of this product is the sole property of Macphie Ltd. and as such this specification may not be disclosed to a third party without the prior written agreement from the Quality Department of Macphie.

This product conforms to existing UK/EU statutory regulations and codes of practice. Where stated Macphie will try to maintain suppliers and country of origins for the raw materials used in the formulation, however, we reserve the right to change suppliers and the source to meet the demands of quality, price and availability in order to maintain continuity of supply to our customers. This specification was correct at the time of publishing.

Product Information Documents are always available from Macphie upon request from [quality.standards@macphie.com](mailto:quality.standards@macphie.com)

When applied in accordance with the specified formulation (TIS), all additive concentrations comply with the maximum permissible levels as defined by regulatory standards

Should no feedback be provided to Macphie within 5 working days, customer acceptance of this PID will be assumed.

Macphie Ltd, Glenbervie, Stonehaven, AB39 3YG, Scotland.  
Macphie (Europe) Ltd., 5th Floor, Block D, Iveagh Court, Harcourt Rd, Dublin 2, D02 VH94, Ireland

## 1. PRODUCT INFORMATION

### 1.1 Product Description

Make a variety of bakes and consistent enough to deliver a melt-in-your-mouth moist crumb every time. Madeira Cake Mix makes it easy to create an array of light and soft cakes and bakes.

### 1.2 Commodity Code

1901200000

### Product Country of Origin

UK

### Site of Manufacture

Glenbervie (GB)

### 1.3 Colour/Appearance

Beige powder conforming to previously accepted material

### 1.4 Texture

Crumble type product

### 1.5 Flavour

Sweet flavour, free from off flavours when baked with quality materials

### 1.6 Product Attributes

Performance/Organoleptic

### Acceptable Levels

Acceptable



# SIMPLY CLEVER FOOD

Madeira Cake Mix 12.5kg

ISSUE DATE:

02/12/2025

## 2.1 INGREDIENT LISTING

Ingredient	Source	E No	Country of Origin	Broadband
Sugar	Sugar Beet		Germany, Belgium, France, Guatemala, UK	40-60%
<b>Wheat</b> Flour ( <b>Wheat</b> Flour, Calcium, Niacin, Iron, Folic Acid, Thiamin)	Wheat		Denmark, China, India, Sweden, United States, UK	20-40%
Vegetable Oil	Rapeseed		Australia, Estonia, France, Ireland, Latvia, Lithuania, United Kingdom, Uruguay	<5%
Dried <b>Egg</b> Yolk	Hen's Eggs		France, Portugal, Spain	<5%
Dried <b>Egg</b> White	Hen's Eggs		France, Portugal, Spain	<5%
Modified Starch	Waxy Maize	E1422	France, Hungary, Italy	<2%
Whey Powder ( <b>Milk</b> )	Milk		Ireland, UK	<2%
Emulsifiers				<2%
Propane-1,2-diol esters of fatty acids	Palm Oil	E477	Malaysia	
Mono- and diglycerides of fatty acids	Palm Oil	E471	Malaysia, Papua New Guinea, Colombia, Indonesia	
Sodium stearoyl-2-lactylate	Palm	E481	Malaysia, Denmark, Indonesia	
Raising Agents				<1%
Disodium diphosphate		E450(i)	United States	
Sodium bicarbonate		E500(ii)	UK	
Salt	Mineral		UK	<1%
Stabiliser				<1%
Hydroxypropyl methyl cellulose	Wood Pulp	E464	Germany, France, Norway, United States	
<b>Wheat</b> Gluten	Wheat		Germany	<1%
Flavouring	Natural		Netherlands	<1%

For any products containing palm oil; please see despatch notes/invoices for RSPO palm oil sustainability status.

## 2.2 INGREDIENT DECLARATION

The following gives the U.K. Ingredient Declaration for inclusion in customers finished product "Ingredient Listing":-

Sugar, **Wheat** Flour (**Wheat** Flour, Calcium, Niacin, Iron, Folic Acid, Thiamin), Vegetable Oil (Rapeseed), Dried **Egg** Yolk, Dried **Egg** White, Modified Starch, Whey Powder (**Milk**), Emulsifiers (Propane-1,2-diol esters of fatty acids, Mono- and diglycerides of fatty acids, Sodium stearoyl-2-lactylate), Raising Agents (Disodium diphosphate, Sodium bicarbonate), Salt, Stabiliser (Hydroxypropyl methyl cellulose), **Wheat** Gluten, Flavouring.

For allergy advice, including cereals containing gluten, see ingredients in **bold**



**SIMPLY  
CLEVER  
FOOD**

Madeira Cake Mix 12.5kg  
ISSUE DATE: 02/12/2025

3. **NUTRITION INFORMATION**

3.1 Typical Values Per 100g of Product

Nutrient	Amount	Units
Energy (kJ)	1769	kJ
Energy (kcal)	419	kcal
Fat	7.6	g
of which saturates	2	g
Carbohydrates	79	g
of which sugars	45	g
Fibre	2	g
Protein	7.2	g
Salt	1.3	g

Source: Analysis (supplier) /Calculation (McCance & Widdowson)



**SIMPLY  
CLEVER  
FOOD**

**Madeira Cake Mix 12.5kg**  
**ISSUE DATE:** 02/12/2025

#### 4.1 **ALLERGEN INFORMATION**

	<b>Recipe Contains</b>	<b>Used on Line</b>	<b>Used on Site</b>
Cereals containing Gluten (wheat, rye, barley, spelt, oats, kamut or their hybridised strains) and products thereof	Yes	Yes	Yes
Wheat and products thereof	Yes	Yes	Yes
Rye and products thereof	No	No	No
Barley and products thereof	No	No	Yes
Spelt and products thereof	No	No	No
Oats and products thereof	No	Yes	Yes
Kamut and products thereof	No	No	No
Crustaceans and products thereof	No	No	No
Molluscs and products thereof	No	No	No
Eggs and products thereof	Yes	Yes	Yes
Fish and products thereof	No	No	No
Peanuts and products thereof	No	No	No
Soybeans and products thereof	No	Yes	Yes
Milk and milk products thereof (including lactose)	Yes	Yes	Yes
Nuts (Almond, Hazelnut, Walnut, Cashew, Pecan nut, Brazil nut, Pistachio nut, Macadamia nut and Queensland nut) and products thereof	No	No	No
Celery and products thereof	No	No	No
Mustard and products thereof	No	No	No
Sesame seeds and products thereof	No	No	No
Lupin and products thereof	No	No	No
Sulphur dioxide and sulphites (E220-E228) at concentrations of more than 10 mg/kg or 10 mg/litre expressed as SO <sub>2</sub>	No	Yes	Yes

#### 4.2 **POSSIBLE ALLERGEN CROSS CONTAMINATION DURING PROCESSING**

<b>May also contain</b>	<b>Soya</b>
This product is made on shared lines that process products containing allergenic ingredients and therefore may contain these allergens (used on the line as stated above). The level of cross contact can vary. We strongly recommend our customers pass this allergen information forward and include on their own product labels.	



# SIMPLY CLEVER FOOD

Madeira Cake Mix 12.5kg

ISSUE DATE:

02/12/2025

## 4.3 SUPPLEMENTARY DATA

		Contains
Animal products (other than those listed above) and products thereof		No
Maize and products thereof		Yes
Colours - non natural		No
Colours - natural		No
Flavours - non natural		No
Flavours - natural		Yes
GM materials		No
Palm oil		Yes
	Suitable For	Certified
Vegetarians	Yes	No
Vegans	No	No
Coeliacs	No	No
Halal	Yes	No
Kosher	Yes	No

Information contained within this document is based exclusively on the product as sold. Full consideration should therefore be given to product make-up/finished product standard.

## 5. STORAGE CONDITIONS AND SHELF LIFE

5.1 Unopened		
Product Code	Pack Size	Shelf Life (sealed)
10000102	12.5kg	180 days from date of manufacture. Clearly marked with "Best Before" date.
Storage Conditions	Unopened, store in a cool, dry place (<20°C)	

5.2 Opened	
Shelf Life	Until end of shelf life, provided it is stored in closed unit
Storage Conditions	Store in a cool, dry place (<20°C)

5.3 Freeze Thaw Stability
Freeze-thaw stable in application only, not in pack

5.4 Recommended Make Up Instructions/Use
See product label and/or Technical Information Sheet. Available from <a href="http://www.macphie.com">www.macphie.com</a> or from the Customer Service Team ( <a href="mailto:Customer.Service@macphie.com">Customer.Service@macphie.com</a> )

## 6. FOOD SAFETY DATA

Test	Standard
E.coli	<100 cfu/g
S.Aureus	<100 cfu/g



# SIMPLY CLEVER FOOD

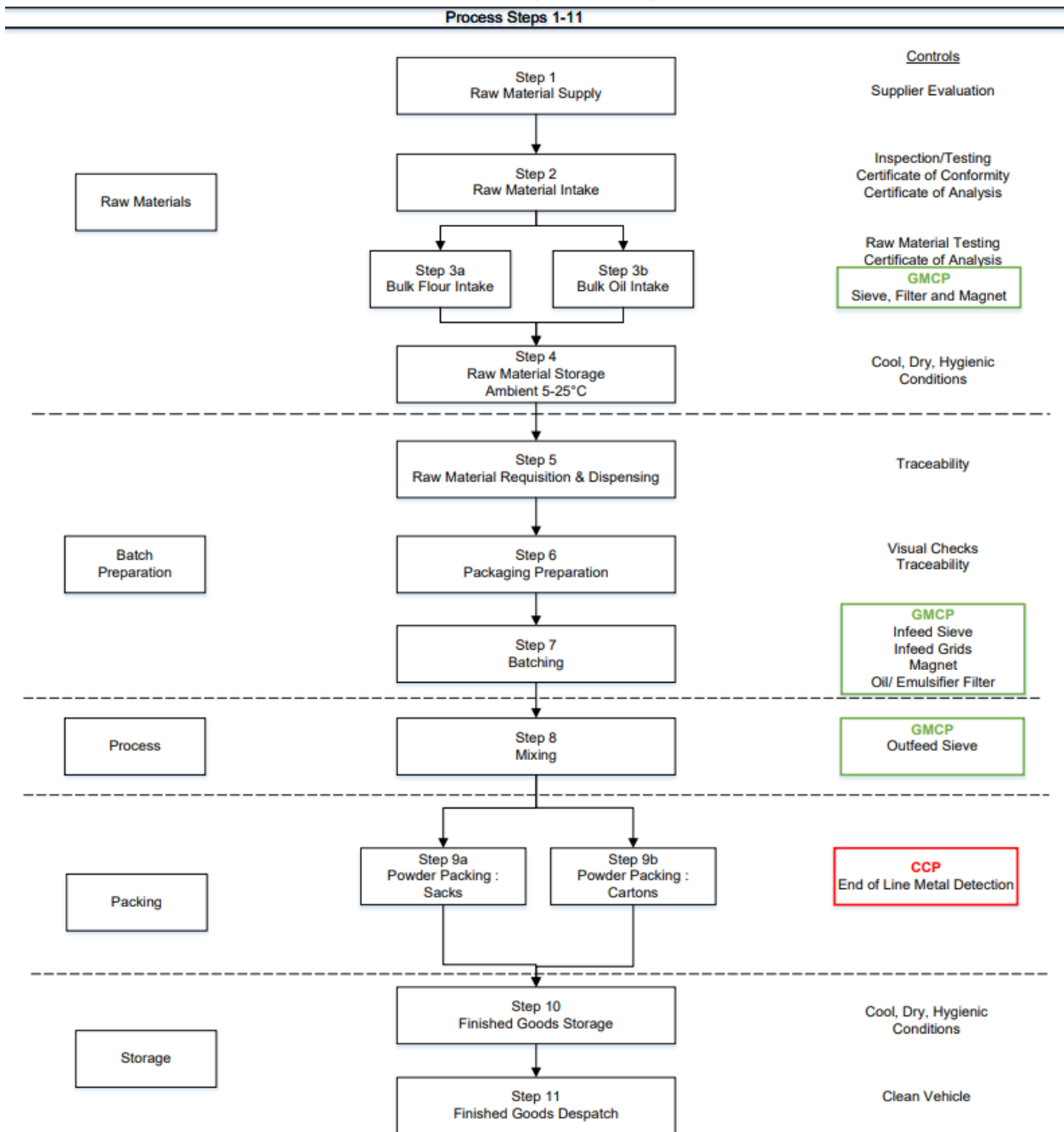
Madeira Cake Mix 12.5kg

ISSUE DATE:

02/12/2025

## 7. HACCP FLOW CHART

### Powder Products (PID HACCP)





# SIMPLY CLEVER FOOD

Madeira Cake Mix 12.5kg

ISSUE DATE:

02/12/2025

## 8. PACKAGING

8.1	Packaging							
	Outer Packaging			Dimensions (m)		Weights (kg)		
		Small Red Easy Open Sack-HS FC	Length	0.76	Paper	0.114		
			Width	0.427	Plastic	0.022		
	Colour	Red	Height	n/a	Metal	0		
	Recyclable?	Yes			Net	0.136		
	Label (Outer Packaging)			Dimensions (m)		Weights (kg)		
		Blank White Label 140 x 170mm	Length	0.17	Paper	0.001		
			Width	0.14	Plastic	0		
	Colour	White	Height	n/a	Metal	0		
	Recyclable?	Yes			Net	0.001		
	Transport Packaging							
	Item	Material		Colour		Weights (kg)		
	Pallet Cover		Plastic	Transparent		0.064		
	Pallet Stretchwrap		Plastic	Transparent		0.450		
	Pallet Layerboard		Paper	Brown		0.379		
8.2	Pallet Information			Blue				
8.3	Sealing			Heat Sealed				
8.4	Dimensions of Unit (m)		Length	0.76	Width	0.427	Height	n/a
8.5	Pallet Configuration			Units per layer		7	Total per pallet	
				Number of layers		7	50	
				Additional		1		
				Total pallet weight (kg)		660.9		
8.6	GTIN				Barcode		GTIN Series	
				Inner	n/a		n/a	
				Outer	05017506006714		GTIN 14	
8.7	Traceability			Each unit is labelled with a Macphie label detailing product name, product code, product weight (minimum), best before date (DD/MMM/YY), and system-generated 6 digit lot/batch No. Sequential unit number is ink jetted directly onto the unit.				