

Korker Original Sausages 24x454g Case

Korker Original Sausages 24x454g

PRODUCT DESCRIPTION

Korker Original Pork Sausages 24x454g

Brand	Korker Sausages Ltd
Manufacturer Product Code	HP/454G/CASE
Product Type	Food
Product Category	Meatballs, Burgers & Sausages
Storage Type	Frozen
Erudus ID	36802dee79bc41639f741fc1b05ea1cc
Specification Type	Meat

Inner Component GTIN	5023514768407
Outer Case GTIN	5023514768407



INGREDIENTS

Ingredient Declaration

Pork (60%), Water, Rusk [WHEAT Flour (Contains Calcium Carbonate, Iron, Niacin, Folic Acid, Thiamin), Water, Salt (Contains E535 anticaking agent), Yeast], Pork Fat, Salt, Dried Sage, White Pepper, Dried Ginger, Black Pepper, Preservative (Sodium SULPHITE E221), Stabiliser (E450, Salt). Filled into a UK edible beef protein casing [Beef Protein, Stabiliser (Cellulose)].

ALLERGENS

Product Contains:

Celery/Celeriac	No	Mustard	No
Cereals Containing Gluten	Yes	Nuts (Tree)	No
Barley	No	Almond nuts	No
Oats	No	Brazil nuts	No
Rye	No	Cashew nuts	No
Wheat (including Spelt and Khorasan)	Yes	Hazelnuts	No
Crustacea	No	Macadamia (Queensland) nuts	No
Eggs	No	Pecan nuts	No
Fish	No	Pistachio nuts	No
Lupin	No	Walnuts	No
Milk	No	Peanuts	No
Molluscs	No	Sesame Seeds	No
		Soybeans	No
		Sulphur Dioxide and Sulphites	Yes

SUPPLEMENTARY
INGREDIENT
INFORMATION

Palm Oil	No
Hydrogenated Vegetable Oil/Fat	No
GM Protein/DNA	No

ADDITIVES

Product Contains:

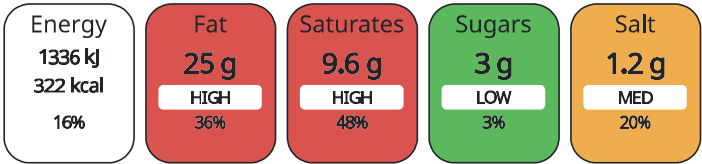
Artificial Antioxidants	Yes	Artificial Flavourings	Yes
Artificial Colours	No	Artificial Preservatives	Yes
Artificial Flavour Enhancers	Yes	Artificial Sweeteners	No

DIET SUITABILITY

Halal Diet	No	Kosher Diet	No
------------	----	-------------	----

NUTRITIONAL
INFORMATION AS
SOLD

Each 100g/ml portion contains:



of your reference intake.

Typical values per 100g/ml : Energy 322kcal / 1336kJ

Nutrient	per 100g	RI per 100g
Energy (kJ)	1336 kJ	16%
Energy (kcal)	322 kcal	16%
Fat	25 g	36%
of which Saturates	9.6 g	48%
Carbohydrate	12 g	5%
of which Sugars	3 g	3%
Fibre	1.3 g	
Protein	11 g	22%
Salt	1.2 g	20%

HANDLING &
STORAGE
INFORMATION

Directions For Use

For best results cook from frozen. Grill for approx. 20 mins, turning frequently until internal temperature of 75 degrees C is achieved. Alternatively shallow fry or oven bake. Food safety statement: This is a raw product cook until piping hot.

Storage Instructions

Store at -18 degrees C or below. Once defrosted do not refreeze.

Shelf Life from Time of Production	365 Days
------------------------------------	----------

ORIGIN

Product Country of Origin	United Kingdom
Additional Origin Details	N/A
Origin of the Primary Ingredient	Belgium, United Kingdom

PRODUCT
CHARACTERISTICS

Standards Testing		
Do you undertake trend analysis of microbiological results?	No	Is shelf life testing undertaken? No

Microbiological Standards					
Organism	Description	Frequency	Target	Maximum	Sample (g or ml)
Bacillus Cereus (cfu/g or ml)		Every 6 months	<20	20	454
E. Coli (cfu/g or ml)		Every 6 months	<50	50	454
Enterobacteriaceae (cfu/g or ml)		Every 6 months	<100	100	454
Salmonella (cfu/g or ml)		Every 6 months	=0	0	454

	Organism	Description	Frequency	Target	Maximum	Sample (g or ml)	
	Aerobic Colony Count (ACC) (cfu/g or ml)		Every 6 months	<5	5	454	
CONFIGURATION	Case Configuration		Inner Pack Configuration				
	Total Quantity of Inner Components in Outer Case	24 Units	Count per Inner Component		8		
	Is the Outer Case Splittable?	Yes					
PRODUCT WEIGHTS	Inner Component						
	Variable Weight Consumer Item	No					
	Inner Component Weight	454 g					
	Inner Component Volume	8 cl					
PRODUCT DIMENSIONS	Outer Case						
	Outer Case Gross Weight	10.9 kg					
	Outer Case Net Weight	10.9 kg					
	Inner Component						
	Inner Component Depth	260 mm					
	Inner Component Width	165 mm					
	Inner Component Height	30 mm					
PALLET INFORMATION	Outer Case						
	Outer Case Depth	350 mm					
	Outer Case Width	290 mm					
	Outer Case Height	220 mm					
	Non Palletised	Yes					
	Inner Component Packaging						
	Type	Materials	Weight	Recycled Material %	Recyclable	Returnable	Composite
Tetra Pack	Plastic	8 g					
PACKAGING	Outer Case Packaging						
	Type	Materials	Weight	Recycled Material %	Recyclable	Returnable	Composite
	Case	Paper/Cardboard	310 g				
	Transport Packaging						
	Type	Materials	Weight	Recycled Material %	Recyclable	Returnable	Composite
	Other	Plastic	500 g			Yes	
	OTHER INFORMATION	Manufacturer Comments					
N/A							

CONTACT
INFORMATION

Address

Korker Sausages Ltd
Branns Drive
High Street
Rolvenden, Kent
TN17 4LN
England

P: (Phone) 01580 241307

Commercial Contact

Ed Hoad
Director
enquiries@korker-sausages.co.uk

P: (Phone) 01580 241307

The information on the [Erudus System](#) has been supplied by the manufacturers of the products and, whilst the owners of the Erudus System take steps to ensure the information is regularly updated, they give no warranty and no guarantee that the information is accurate. Product information and ingredients may change, please always read product labels carefully in addition to using the information provided by Erudus.

We do not accept liability for any inaccuracies or incorrect information contained on this site.
Please visit <http://www.erudus.com/terms-and-conditions> for full terms and conditions.