

## PRODUCT INFORMATION DOCUMENT

### WARRANTY

The intellectual property applied in the development of this product is the sole property of Macphie and as such this specification may not be disclosed to a third party without the prior written agreement of the Quality Department of Macphie.

### 1. PRODUCT DESCRIPTION

#### 1.1 Product Code

GP303

#### 1.2 Product Description

A dessert topping in convenient squeeze bottle

#### 1.3 Colour/Appearance

A bright red liquid

#### 1.4 Texture

Smooth liquid

#### 1.5 Flavour

Strawberry flavoured, sweet acidic

#### 1.6 Product Attribute                      Acceptable Level

Organoleptic

Acceptable

Solids (Refractive Index)

55 - 60 Brix

Viscosity (hot)

9.0 ± 1.0

pH

< 4.0

**2. INGREDIENT LISTING**

2.1 The following gives the U.K. Ingredient Declaration for inclusion in customers finished product "Ingredient Listing":-

<b>Ingredient (state source)</b>	<b>Country of Origin</b>	<b>Broadband %</b>
Sugar	UK	30-50
Water	UK	30-50
Dextrose	Germany	10-30
Strawberry Puree	Netherlands	10-30
Citric Acid (E330)	UK	<10
Stabilisers (Xanthan Gum (E415) (Maize), Guar Gum (E412))	Austria, India, Netherlands	<10
Colour (Anthocyanins (E163))	UK	<10
Flavouring	UK	<5
Preservative (Sorbic Acid (E200))	Germany	<5

**3. NUTRITION INFORMATION**

3.1 **TYPICAL VALUES PER 100g OF PRODUCT:-**

<b>Nutrient</b>	<b>Amount</b>	<b>Units</b>
Kilo Joules	935	kJ
Kilo Calories	225	kcal
Protein	0.1	g
Carbohydrate	55.3	g
of which sugar	53.9	g
Total Fats	0.2	g
of which saturates	0.0	g
Fibre	0.8	g
Sodium	0.01	g
Salt Equivalent	0.0	g

Source: Analysis (supplier) /Calculation (McCance & Widdowson)

Uncontrolled Copy

**4. ALLERGEN INFORMATION**

Used on site	CONTAINS:	YES	NO
✓	Cereals containing Gluten (wheat, rye, barley, spelt, oats, kamut or their hybridised strains) and products thereof		✓
✓	Crustaceans and products thereof		✓
✓	Molluscs and products thereof		✓
✓	Eggs and products thereof		✓
✓	Fish and products thereof		✓
	Peanuts and products thereof		✓
✓	Soybeans and products thereof		✓
✓	Milk and milk products thereof (including lactose)		✓
	Nuts (Almond, Hazelnut, Walnut, Cashew, Pecan nut, Brazil nut, Pistachio nut, Macadamia nut and Queensland nut) and products thereof		✓
✓	Celery and products thereof		✓
✓	Mustard and products thereof		✓
	Sesame seeds and products thereof		✓
	Lupin and products thereof		✓
✓	Sulphur dioxide and sulphites (E220-E228) at concentrations of more than 10 mg/kg or 10 mg/litre expressed as SO <sub>2</sub>		✓

This product information document has been prepared in accordance with the labelling requirements of Directive 2003/89/EC. The information detailed within section 4 outlines the physical presence of allergens (by addition) in accordance with Annex IIIa of the aforementioned directive. It should be noted that as no threshold values exist for the above listed allergens (allergens used on site), with the exception of Sulphites, an absolute guarantee of their absence cannot be given, therefore materials indicated as 'used on site' should be considered under alibi labelling on finished products.

**4.2 SUPPLEMENTARY DATA**

CONTAINS:	YES	NO
Animal products (other than those listed above) and products thereof		✓
Maize and products thereof	✓	
Colours - artificial		✓
Colours - natural	✓	
Flavours - artificial		✓
Flavours – nature identical		✓
Flavours - natural	✓	
GM Materials		✓
SUITABLE FOR:	YES	NO
Vegetarians	✓	
Vegans	✓	

**5. STORAGE CONDITIONS AND SHELF LIFE**

Pack Code	Pack Size	Shelf Life	
GP303/342	12x500g	<b>Total (sealed)</b>	9 months from date of manufacture. Clearly marked with "Best Before" date
		<b>Opened</b>	Until "best before" date when stored under hygienic chill conditions.

5.2 **Storage conditions-sealed** Store in cool, dry hygienic environment (<20°C)  
**Storage conditions -opened** Store in hygienic chill

5.3 **Freeze Thaw Stability**  
 Freeze thaw stable in application only, not in pack

5.4 **Recommended Make Up Instructions/Use**  
 See product label and/or Technical Information Sheet. Available from customer services at [c.services@macphie.com](mailto:c.services@macphie.com)

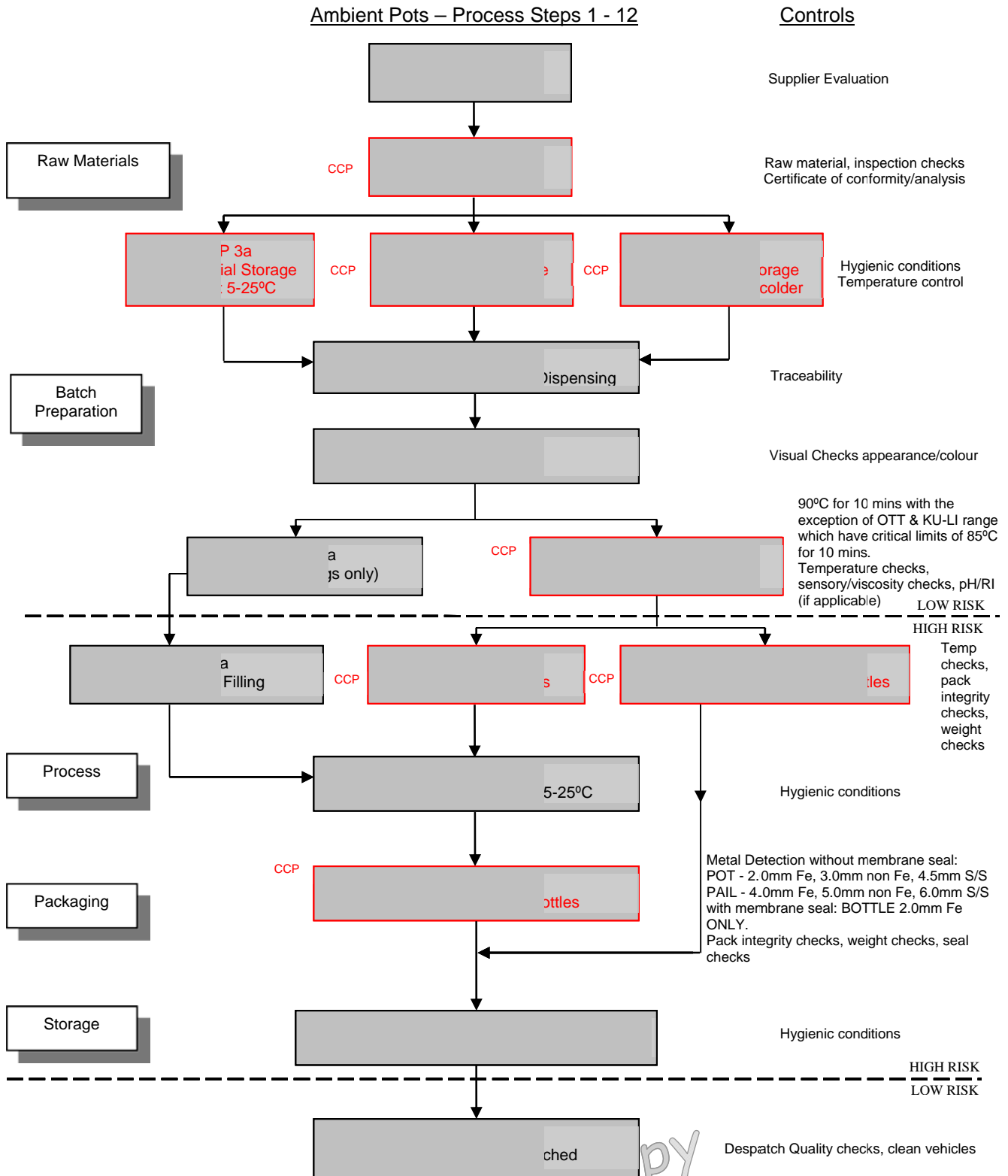
**6. FOOD SAFETY DATA**

**6.1 Microbiological (typical)**

TEST	STANDARD
Enterobacteria	< 100 cfu/g
Yeast & moulds	< 5,000 cfu/g

Uncontrolled Copy

7. HACCP FLOW CHART



**8. PACKAGING**

<b><u>Packaging</u></b>		
8.1	<b><u>Pack Size:</u></b>	12 x 500 g cartons
	<b>Primary pack</b>	<p><b>Specification</b></p> <p><b>Neutral Bottle, Flip Top Cap with seal and label</b></p> <p>Bottle: food grade polypropylene copolymer (PP) / polyethylene terephthalate (PET)</p> <p>Flip Top Cap: food grade polypropylene co-polymer with PP/PET seal</p>
		<b>Weights(Kg)</b>
		0.05
	<b>Secondary Pack</b>	Cardboard case
		0.126
	<b>Tertiary Pack</b>	Pallet Stretchwrap: polyethylene
		0.450
		Pallet layer board: paper
		0.397
		Wooden Pallet
		27
		Cardboard case
		0.126
8.2	<b><u>Dimensions of Unit</u></b> (length x width x height)	339mm x 151mm x 173mm
8.3	<b><u>Palletisation</u></b> (dimensions of pallet)	
	<b>Pallet Configuration</b>	21 cases x 7 layers=147cases/pallet
	<b>Dimensions of pallet</b>	1200mm x 1000mm
8.4	<b><u>Labelling</u></b>	Each case is labelled with product name, product code, product weight, Best Before date (DD/MM/YY), Batch no.

Uncontrolled Copy

MSDS		
<b>1.</b>	<b>PRODUCT &amp; COMPANY IDENTIFICATION</b>	
<b>1.1</b>	Product name	OTT STRAWBERRY DESSERT TOPPING
<b>1.2</b>	Product Code	GP303
<b>1.3</b>	Description	A dessert topping in convenient squeeze bottle
<b>1.4</b>	Manufacturers Name, Address & tel no.	Macphie of Glenbervie Ltd., Glenbervie, Stonehaven, Kincardineshire. AB39 3YG 01569 740641 (Office Hours)

<b>2.</b>	<b>COMPOSITION/INFORMATION ON INGREDIENTS</b>	
<b>2.1</b>	Contains	See section 2 of main document

<b>3.</b>	<b>HAZARD IDENTIFICATION</b>	
	Contains substances, which may cause contact sensitisation, allergic or irritant response. Prolonged skin contact may cause contact dermatitis and/or minor irritation.	

<b>4.</b>	<b>FIRST AID MEASURES</b>	
<b>4.1</b>	Inhalation	Not applicable.
<b>4.2</b>	Ingestion	Not applicable.
<b>4.3</b>	Skin contact	Wash off with soapy water. If skin irritation develops seek medical advice.
<b>4.4</b>	Eye contact	Rinse immediately with plenty of water. If irritation persists seek medical advice.

<b>5.</b>	<b>FIRE/EXPLOSION HAZARD</b>	
<b>5.1</b>	Suitable fire extinguishing media	Water, Foam, Dry Chemical, Carbon Dioxide
<b>5.2</b>	Protection against fire	Good housekeeping to avoid the accumulation of spillages.

<b>6.</b>	<b>ACCIDENTAL RELEASE MEASURES</b>	
<b>6.1</b>	Methods of cleaning/absorption	Absorb spillages with a suitable material.
<b>6.2</b>	Personal precautions	See section 8. Exposure controls/personal protection
<b>6.3</b>	Environmental precautions	The method of disposal should be in accordance with current local authority regulations.

<b>7.</b>	<b>HANDLING AND STORAGE</b>	
<b>7.1</b>	Handling	Keep working area free from accumulated spillages.
<b>7.2</b>	Storage	Store in original packaging. Keep cool and dry and ensure product is stored in accordance with Food Safety Act.

<b>8.</b>	<b>EXPOSURE CONTROLS/PERSONAL PROTECTION</b>	
<b>8.1</b>	General Precautions	a) Handle in accordance with good occupational hygiene and safety practices. Avoid contact with skin and eyes. b) Change work practices to minimise spillages. <ul style="list-style-type: none"> <li>• Improve care and attention to the prevention of spillages.</li> <li>• Avoid damage to packaging to prevent leaks.</li> </ul>
<b>8.2</b>	Ventilation	In accordance with LEV requirements as defined in COSHH 2002(as amended) legislation.
<b>8.3</b>	Respiratory Protection	Not required under normal conditions.
<b>8.4</b>	Eye Protection	Safety goggles as required.
<b>8.5</b>	Skin Protection	Standard protective clothing (including gloves) and appropriate skin protection if required.

Uncontrolled Copy

<b>9.</b>	<b>PHYSICAL &amp; CHEMICAL PROPERTIES</b>	
<b>9.1</b>	Form	Liquid
<b>9.2</b>	Colour	Refer to section 1 of main document
<b>9.3</b>	Odour	Characteristic
<b>9.4</b>	Flammability	Product is not combustible.

<b>10.</b>	<b>STABILITY &amp; REACTIVITY</b>	
	This material is stable under normal conditions of use.	
<b>10.1</b>	Conditions to avoid	None
<b>10.2</b>	Materials to avoid	None
<b>10.3</b>	Hazardous decomposition products	None

<b>11.</b>	<b>TOXICOLOGICAL INFORMATION</b>	
<b>11.1</b>	Inhalation	Not applicable.
<b>11.2</b>	Eye Irritation	Contact with eyes may cause irritation.
<b>11.3</b>	Skin Irritation	Prolonged and/or frequent contact may cause irritation and dermatitis
<b>11.4</b>	Ingestion	Not applicable.

<b>12.</b>	<b>ECOLOGICAL INFORMATION</b>	
	The product should not be allowed to enter any watercourse.	

<b>13.</b>	<b>DISPOSAL CONSIDERATIONS</b>	
	Product not believed to be dangerous to the environment and so no special disposal method is required. However, the method of disposal should be in accordance with current local authority regulations.	

<b>14.</b>	<b>TRANSPORT INFORMATION</b>	
<b>14.1</b>	UN No.	N/A
<b>14.2</b>	Sea	N/A
<b>14.3</b>	Road/Rail	N/A
<b>14.4</b>	Air	N/A

<b>15.</b>	<b>REGULATORY INFORMATION</b>	
	Classification not required.	

<b>16.</b>	<b>OTHER INFORMATION</b>	
	Under the 2002 COSHH regulations (as amended) you are reminded that the user is under legal obligation to carry out a suitable and sufficient assessment as to the risks to health which this material may present under its actual condition of use.	

The information contained throughout the document was correct at the time of publishing.

Uncontrolled Copy