



Kluman and Balter Limited

The i.o. Centre
Unit 8
Lea Road
Waltham Cross
EN8 7PG

Tel: 01992 704000

Technical Department

Tel: 01992 704002

Fax: 01992 764937

E: technical@kaybeefoods.com

Product Specification

Product	: Poppy Seed		
Size / Weight	: 25kg		
K & B Code	: 160010		
Date	: 14.04.14	Issue:	8
Reason for issue	: Mustard used on site removed		

1. Product Description: Small bluish-grey seeds.

2. Analytical Standards:

2.1. Chemical:

Parameter	Target Value	Limits	Method / Frequency
Moisture	8.6% Max		Each batch, by moisture meter.
Pesticides	As per EU/UK legislation		
Heavy Metals	As per EU/UK legislation		

2.2. Physical, including allowable contaminants and levels and organoleptic attributes:

Parameter	Target Value	Limits	Method / Frequency
EVM	Absent	0.2% by weight	
Purity	99.9% clean.	99.8% by weight	Each batch
Damaged seeds	<10%	10%	



2.3. Microbiological:

Parameter	Target Value	Limits	Method / Frequency
T.V.C.	100 000 cfu / g	>500 000 cfu / g	Each batch
Coliforms	4 x 10 ³ cfu / g	>4 x 10 ³ cfu / g	Each batch
E. Coli	10	>20	Each batch
S.Aureus	10	>40	Each batch
Salmonella	Absent in 25g	Present in 25g	Each batch
Yeasts & moulds	1000 cfu / g	>10,000 cfu / g	Each batch

3. Metal Detection:

Non-Ferrous:	1.5 mm	Ferrous:	1.2 mm	Stainless Steel:	2.0 mm
--------------	--------	----------	--------	------------------	--------

Frequency of metal checking metal detector: Hourly

Reject Method: Belt stop, Alarm.

4. Nutrition:

Source of data: (USDA)

	Values per 100g
Energy, Kcals	525
Energy, Kjoules	2196
Protein	17.99g
Fat	41.56g
- of which saturates	4.51g
- of which mono-unsaturates	5.98g
- of which poly-unsaturates	28.56g
Carbohydrate	28.13g
- of which sugars	2.99g
- of which starch	
Sodium	26 mg
Fibre	19.5g

5. Shelf Life:

Shelf life from date of production: 9 months

Minimum life on delivery to Kluman & Balter: 4.5 months

6. Storage and Transport Conditions:

6.1. Storage Conditions: Cool dry ambient conditions, away from direct sunlight.

6.2. Transport Conditions: Cool dry ambient conditions, away from direct sunlight.

7. Packaging:

7.1 Primary Packaging: (unit of sale)

Dimensions (L x W x H) mm: 770 mm x 390mm x 150mm.

Material and closure: 3-ply brown or white paper sacks, stitch closed.

Weight of primary packaging: 500g

Label position: White label applied to bottom of bag

Label information: Best before end.....

Coding information and example:

7.2 Secondary Packaging: n/a

Dimensions (L x W x H) mm:

Material and closure:

Weight of secondary packaging:

Label position:

Label information:

Coding information and example:

7.3 Palletisation:

Palletisation: 40 bags per pallet

Units per layer: 5 bags

Layers per pallet: 8 layers ,

Pallet type: GKN 4W Pallet size: 1000 x 1200mm Material: Wood

Height of completed pallet:1500

Weight of completed pallet: 1000 kg

8. Weight Control:

Average weight or minimum weight: Minimum

Target Weight: 25kg

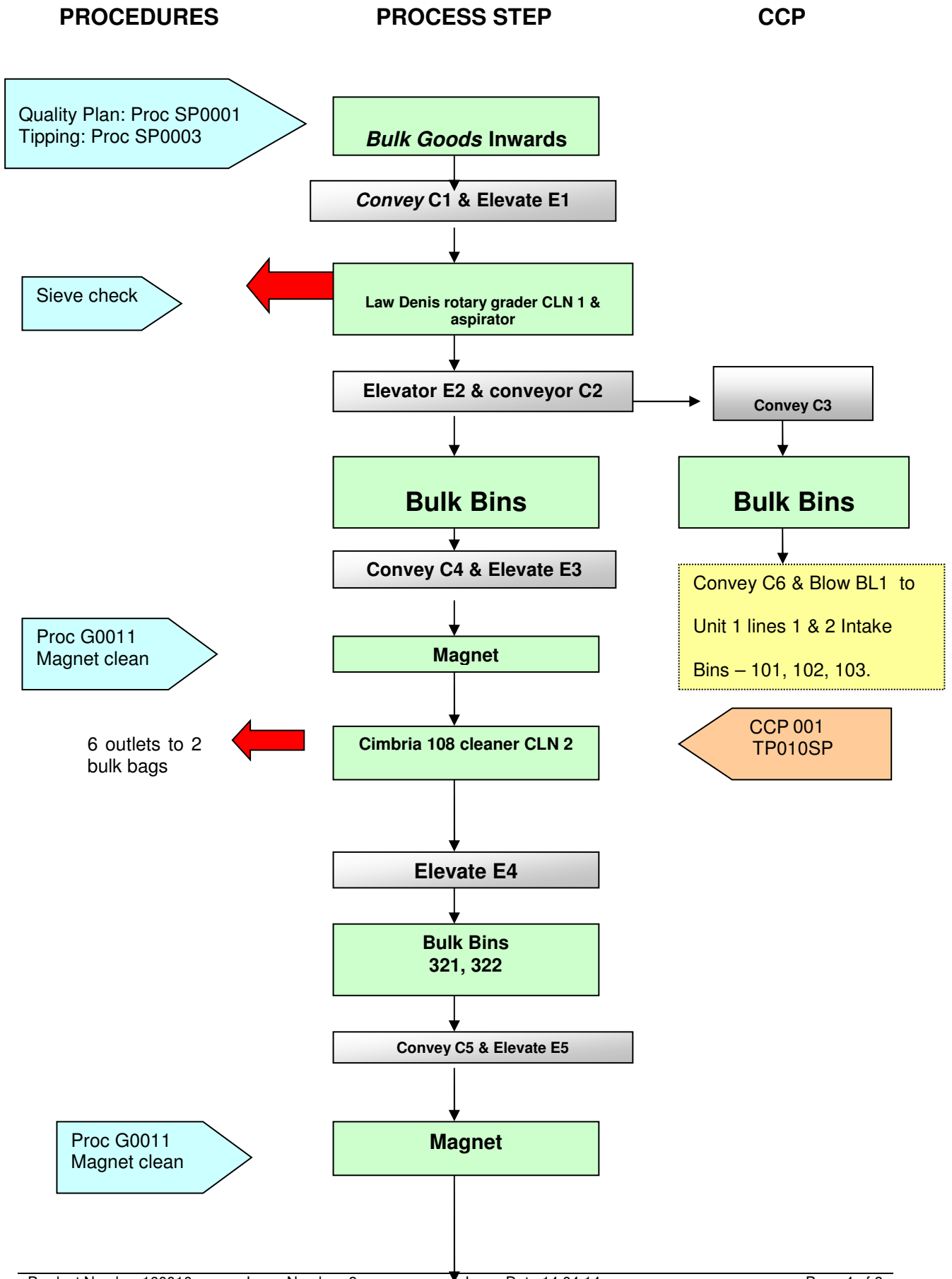
Label Weight: 25kg

9. Ingredient Declaration (legal): Poppy Seed

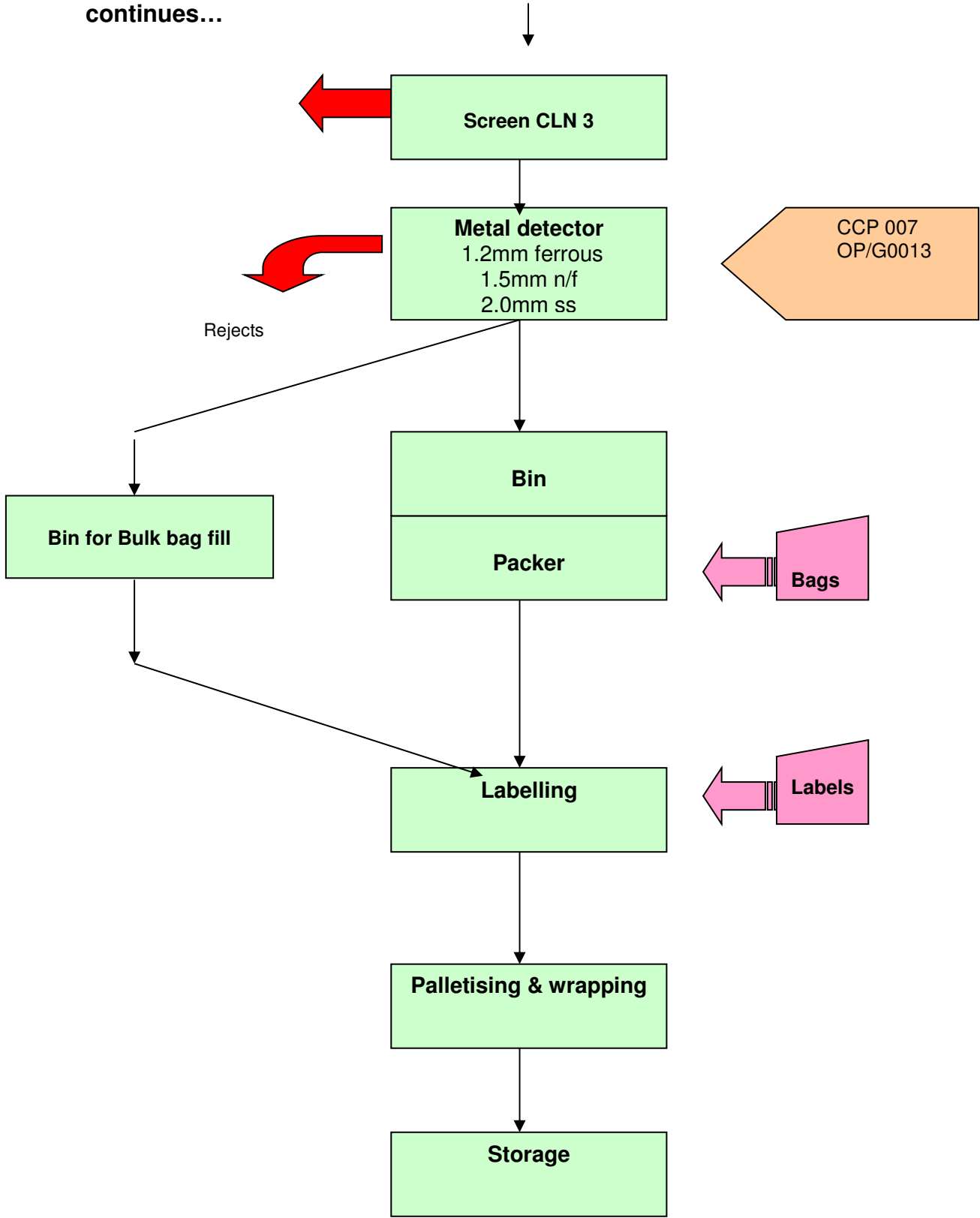
10. Raw Material Components (in descending order):

Ingredient, including compound ingredients.	%	+ / -	Supplier	Country of Origin	GM Status
Poppy seed	100.0			Czech, Australian, Dutch, Chinese	GM Free
Total	100				

11. Flow diagram of manufacturing process, showing critical control points:



continues...



12. Detail of Critical Control Points:

CCP No.	Hazard Identified	Control Procedure	Critical Limits, reject procedure, check frequency	Responsibility, authority
1. Twin bed screen	Physical, over & undersize & low density material.	Operator training.	Correct size sieve, undamaged. If reject, change sieve & reprocess. Sieve check at start up.	Line Operative, Site Manager.
7. Metal detection bulk	Metal contamination.	In-line metal detector. X-ray	1.5mm ferrous. If reject, re-check product since previous satisfactory check. Test piece check at start up and hourly.	Line Operative, Site Manager.

13. Food Intolerance Data:

The product is **FREE** from the following:

Component	Y or N	Detail if N
Additives ; Artificial	Y	
Additives ; Natural	Y	
Antioxidants BHA/BHT	Y	
Artificial Sweeteners	Y	
Azo and Coal Tar Dyes	Y	
Benzoates	Y	
Colours: Artificial	Y	
Colours: Natural	Y	
Colours: Nature Identical	Y	
Egg & Egg Derivatives	Y	
Flavourings: Artificial / Nature Identical	Y	
Flavourings: Natural	Y	
Glutamates, MSG	Y	
Gluten and Gluten Derivatives	Y	
Histamine, Caffeine	Y	
Lactose	Y	
Lupin Seed	Y	
Milk & Milk Derivatives	Y	
Modified Starches	Y	
Mustard/Mustard seeds, Celery/Celeriac, Kiwi fruit	Y	
Nuts & Nut derivatives (including tree nuts) (and any possible sources of cross contamination)	Y	
Peanuts & Peanut Derivatives	Y	
Potassium Based Salt Substitute	Y	
Preservatives ; Artificial	Y	
Preservatives ; Natural	Y	
Rye, Barley & Oats or their Derivatives	Y	
Seeds (Poppy, Sesame, Sunflower) & Seed Derivatives	N	Poppy Seeds
Sulphites and Sulphur Dioxide	Y	
Wheat and Wheat Derivatives	Y	
Yeast and Yeast Derivatives	Y	
Genetically Modified Ingredients	Y	
Components derived from Maize	Y	
- If No, are they derived from Identity Preserved Source ?		(if Y for maize, leave blank)
Or do they have a negative PCR Certificate ?		(if Y for maize, leave blank)
Components derived from Soya	Y	
- If No, are they derived from Identity Preserved Source ?		(if Y for soya, leave blank)
Or do they have a negative PCR Certificate ?		(if Y for soya, leave blank)
Processing Aids derived from G.M.O.	Y	
Beef	Y	
Beef derivatives, stocks, extracts, offals, gelatin, fat, blood	Y	
Beef, Pork, Lamb, Fish products or derivatives on site	Y	
Fish, Crustacian or Mollusc derivatives, stocks, extracts, offals, gelatin, fat, blood	Y	
Fish, Crustacians or Molluscs	Y	
Lamb	Y	
Lamb derivatives, stocks, extracts, offals, gelatin, fat, blood	Y	
Pork	Y	
Pork derivatives, stocks, extracts, offals, gelatin, fat, blood	Y	

14. Diet Suitability:

The product is **SUITABLE** for the following diets:- (leave blank if not known)

Vegetarians	Y	Ovo - Lacto Vegetarians	Y
Vegans	Y	Muslims / Halal certified	Y
Jewish / Kosher certified	Y	Diabetics	Y
Low Potassium		Coeliacs	Y
Low Sodium		Organic	N

15. Warranty:

We warrant that all food products and packaging materials supplied by Kluman & Balter Ltd:

- Shall comply in all respects with this specification, shall be clean, sound, non-injurious to health and shall be fit for the purpose for which they are intended.
- Shall comply with all aspects with the Food Safety Act 1990, and with associated regulations, and with all other relevant United Kingdom and European Union legislation, regulations, standards and codes of practice. Packaging shall comply with legal requirements for Food Contact Materials.
- Shall be of the nature, substance and quality described and shall not be presented in such a way which may mislead the purchaser.
- Shall be stored, stacked, handled and transported under suitable conditions so as to maintain safety and quality at all times.
- Shall be fully traceable back to the place and time of manufacture, and to the ingredients used.
- This specification is based on manufacturer's information, and is believed to be correct. No liability is accepted for errors and omissions. It may be updated or altered from time to time as new information becomes available.
- Customers are advised to determine the suitability of products for their specific application, and to store and use products according to this specification. It will not normally be possible to provide a life extension on products once delivered to customers' premises.
- Customers must notify any damage or defects immediately on arrival.

For and on behalf of Kluman & Balter:		For and on behalf of: (customer)	
Signature:			
Print Name:	Craig Stewart		
Position:	Technical Manager		
Date:			
KB code & Product:	160010 Poppy Seed		