



**SIMPLY  
CLEVER  
FOOD**

**Meat-free Sausage Roll Concentrate**  
**12.5kg**

**PRODUCT CODE:**

10000224

**PACK SIZE:**

12.5kg

**ISSUE DATE:**

04/12/2025

**CREATED BY:**

JES



## PRODUCT INFORMATION DOCUMENT

### WARRANTY

The intellectual property applied in the development of this product is the sole property of Macphie Ltd. and as such this specification may not be disclosed to a third party without the prior written agreement from the Quality Department of Macphie.

This product conforms to existing UK/EU statutory regulations and codes of practice. Where stated Macphie will try to maintain suppliers and country of origins for the raw materials used in the formulation, however, we reserve the right to change suppliers and the source to meet the demands of quality, price and availability in order to maintain continuity of supply to our customers. This specification was correct at the time of publishing.

Product Information Documents are always available from Macphie upon request from [quality.standards@macphie.com](mailto:quality.standards@macphie.com)

When applied in accordance with the specified formulation (TIS), all additive concentrations comply with the maximum permissible levels as defined by regulatory standards

Should no feedback be provided to Macphie within 5 working days, customer acceptance of this PID will be assumed.

Macphie Ltd, Glenbervie, Stonehaven, AB39 3YG, Scotland.

Macphie (Europe) Ltd., 5th Floor, Block D, Iveagh Court, Harcourt Rd, Dublin 2, D02 VH94, Ireland

### 1. PRODUCT INFORMATION

#### 1.1 Product Description

Easy-to-use concentrate that takes the complexity out of sausage rolls, pies and pastries. Add minced pork, beef or a vegan alternative and cold water to get lightly seasoned, consistent savoury filling which does not shrink back during baking.

#### 1.2 Commodity Code

1901200000

#### Product Country of Origin

UK

#### Site of Manufacture

Glenbervie (GB)

#### 1.3 Colour/Appearance

Cream coloured, coarse free flowing powder conforming to previously accepted material.

#### 1.4 Texture

Coarse, free flowing powder.

#### 1.5 Flavour

Spicy odour and flavour.

#### 1.6 Product Attributes

Performance/Organoleptic

#### Acceptable Levels

Acceptable



# SIMPLY CLEVER FOOD

Meat-free Sausage Roll Concentrate 12.5kg

ISSUE DATE:

04/12/2025

## 2.1 INGREDIENT LISTING

Ingredient	Source	E No	Country of Origin	Broadband
Rusk [ <b>Wheat</b> Flour ( <b>Wheat</b> Flour, Calcium, Niacin, Iron, Folic Acid, Thiamin), Salt]	Wheat		China, Germany, India, Denmark, France, Netherlands, Switzerland, United Kingdom	60-80%
<b>Wheat</b> Flour ( <b>Wheat</b> Flour, Calcium, Niacin, Iron, Folic Acid, Thiamin)	Wheat		China, Germany, India, Canada, France, United Kingdom	20-40%
Salt	Mineral		UK	<5%
Cornflour	Maize		Germany, Italy, Netherlands, Spain	<5%
Ground Black Pepper			India, Malaysia, Brazil, Cambodia, Indonesia, Madagascar, Sri Lanka, Vietnam	<1%
Raising Agents				<1%
Calcium acid pyrophosphate	Mineral	E450(vii)	United States	<1%
Monocalcium phosphate	Mineral	E341(i)	United States	<1%
Ground Nutmeg			India, Indonesia, Vietnam	<1%

For any products containing palm oil; please see despatch notes/invoices for RSPO palm oil sustainability status.

## 2.2 INGREDIENT DECLARATION

The following gives the U.K. Ingredient Declaration for inclusion in customers finished product "Ingredient Listing":-

Rusk [**Wheat** Flour (**Wheat** Flour, Calcium, Niacin, Iron, Folic Acid, Thiamin), Salt], **Wheat** Flour (**Wheat** Flour, Calcium, Niacin, Iron, Folic Acid, Thiamin), Salt, Cornflour, Ground Black Pepper, Raising Agents (Calcium acid pyrophosphate, Monocalcium phosphate), Ground Nutmeg.

For allergy advice, including cereals containing gluten, see ingredients in **bold**

## 3. NUTRITION INFORMATION

### 3.1 Typical Values Per 100g of Product

Nutrient	Amount	Units
Energy (kJ)	1535	kJ
Energy (kcal)	362	kcal
Fat	1.2	g
of which saturates	0.3	g
Carbohydrates	76	g
of which sugars	2.5	g
Fibre	3.6	g
Protein	10	g
Salt	6	g

Source: Analysis (supplier) /Calculation (McCance & Widdowson)



**SIMPLY  
CLEVER  
FOOD**

**Meat-free Sausage Roll Concentrate 12.5kg**

**ISSUE DATE:**

04/12/2025

#### **4.1 ALLERGEN INFORMATION**

	<b>Recipe Contains</b>	<b>Used on Line</b>	<b>Used on Site</b>
Cereals containing Gluten (wheat, rye, barley, spelt, oats, kamut or their hybridised strains) and products thereof	Yes	Yes	Yes
Wheat and products thereof	Yes	Yes	Yes
Rye and products thereof	No	No	No
Barley and products thereof	No	No	Yes
Spelt and products thereof	No	No	No
Oats and products thereof	No	Yes	Yes
Kamut and products thereof	No	No	No
Crustaceans and products thereof	No	No	No
Molluscs and products thereof	No	No	No
Eggs and products thereof	No	Yes	Yes
Fish and products thereof	No	No	No
Peanuts and products thereof	No	No	No
Soybeans and products thereof	No	Yes	Yes
Milk and milk products thereof (including lactose)	No	Yes	Yes
Nuts (Almond, Hazelnut, Walnut, Cashew, Pecan nut, Brazil nut, Pistachio nut, Macadamia nut and Queensland nut) and products thereof	No	No	No
Celery and products thereof	No	No	No
Mustard and products thereof	No	No	No
Sesame seeds and products thereof	No	No	No
Lupin and products thereof	No	No	No
Sulphur dioxide and sulphites (E220-E228) at concentrations of more than 10 mg/kg or 10 mg/litre expressed as SO <sub>2</sub>	No	Yes	Yes

#### **4.2 POSSIBLE ALLERGEN CROSS CONTAMINATION DURING PROCESSING**

<b>May also contain</b>	<b>Egg, Milk, Soya</b>
This product is made on shared lines that process products containing allergenic ingredients and therefore may contain these allergens (used on the line as stated above). The level of cross contact can vary. We strongly recommend our customers pass this allergen information forward and include on their own product labels.	



**SIMPLY  
CLEVER  
FOOD**

**Meat-free Sausage Roll Concentrate 12.5kg**

**ISSUE DATE:**

04/12/2025

#### 4.3 SUPPLEMENTARY DATA

		Contains
Animal products (other than those listed above) and products thereof		No
Maize and products thereof		Yes
Colours - non natural		No
Colours - natural		No
Flavours - non natural		No
Flavours - natural		No
GM materials		No
Palm oil		No
	Suitable For	Certified
Vegetarians	Yes	No
Vegans	Yes	Yes
Coeliacs	No	No
Halal	Yes	No
Kosher	Yes	No

*Information contained within this document is based exclusively on the product as sold. Full consideration should therefore be given to product make-up/finished product standard.*

#### 5. STORAGE CONDITIONS AND SHELF LIFE

5.1 Unopened		
Product Code	Pack Size	Shelf Life (sealed)
10000224	12.5kg	365 days from date of manufacture. Clearly marked with "Best Before" date.
Storage Conditions	Unopened, store in a cool, dry place (<20°C)	

5.2 Opened	
Shelf Life	Until end of shelf life, provided it is stored in closed unit
Storage Conditions	Store in a cool, dry place (<20°C)

5.3 Freeze Thaw Stability
Freeze-thaw stable in application only, not in pack

5.4 Recommended Make Up Instructions/Use
See product label and/or Technical Information Sheet. Available from <a href="http://www.macphie.com">www.macphie.com</a> or from the Customer Service Team ( <a href="mailto:Customer.Service@macphie.com">Customer.Service@macphie.com</a> )

#### 6. FOOD SAFETY DATA

Test	Standard
E.coli	<100 cfu/g
S.Aureus	<100 cfu/g



# SIMPLY CLEVER FOOD

Meat-free Sausage Roll Concentrate 12.5kg

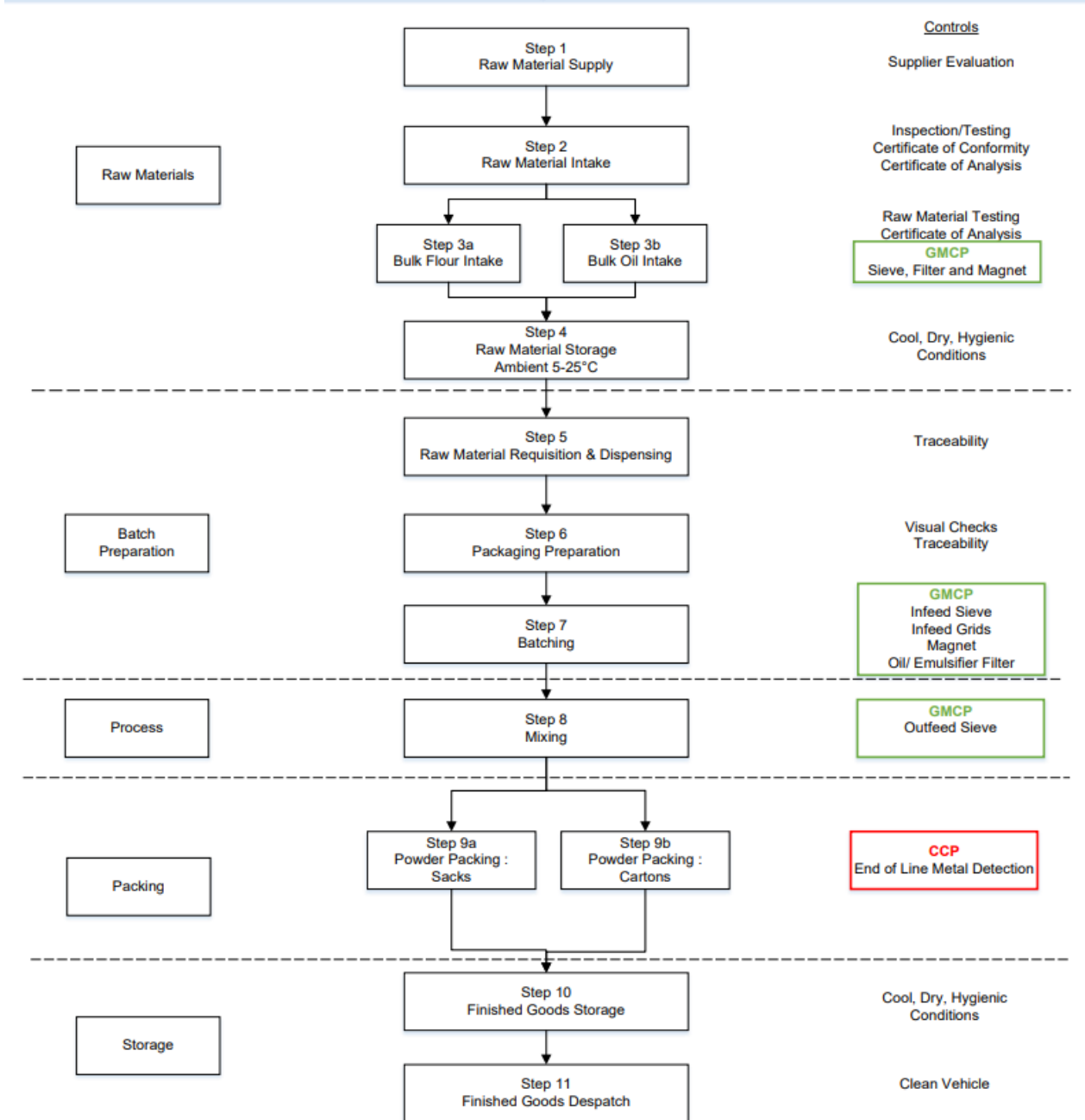
ISSUE DATE:

04/12/2025

## 7. HACCP FLOW CHART

### Powder Products (PID HACCP)

#### Process Steps 1-11





**SIMPLY  
CLEVER  
FOOD**

**Meat-free Sausage Roll Concentrate 12.5kg**

**ISSUE DATE:**

04/12/2025

**8. PACKAGING**

8.1	Packaging						
	Outer Packaging			Dimensions (m)		Weights (kg)	
		Small Red Easy Open Sack-HS FC		Length	0.76	Paper	0.114
				Width	0.427	Plastic	0.022
	Colour	Red		Height	n/a	Metal	0
	Recyclable?	Yes				Net	0.136
	Label (Outer Packaging)			Dimensions (m)		Weights (kg)	
		Blank Yellow Label 140 x 170mm		Length	0.17	Paper	0.001
				Width	0.14	Plastic	0
	Colour	Yellow		Height	n/a	Metal	0
	Recyclable?	Yes				Net	0.001
	Transport Packaging						
		Item	Material	Colour		Weights (kg)	
		Pallet Cover	Plastic	Transparent		0.064	
	Pallet Stretchwrap	Plastic	Transparent		0.450		
	Pallet Layerboard	Paper	Brown		0.379		
8.2	Pallet Information		Blue				
8.3	Sealing		Heat Sealed				
8.4	Dimensions of Unit (m)	Length	0.76	Width	0.427	Height	n/a
8.5	Pallet Configuration		Units per layer		7	Total per pallet  50	
			Number of layers		7		
			Additional		1		
			Total pallet weight (kg)		660.9		
8.6	GTIN		Barcode		GTIN Series		
			Inner	n/a		n/a	
			Outer	05017506452009		GTIN 14	
8.7	Traceability		Each unit is labelled with a Macphie label detailing product name, product code, product weight (minimum), best before date (DD/MMM/YY), and system-generated 6 digit lot/batch No. Sequential unit number is ink jetted directly onto the unit.				