

Changed Sep 23, 2025 11:25

Reviewed Sep 23, 2025 11:25

Erudus ID 89f5f218da614727836d9204f0388a32

Version 4.0

Status Published

Korker Pigs in Blankets

Korker Pigs In Blankets

PRODUCT DESCRIPTION

Pigs in Blankets

| | |
|---------------------------|----------------------------------|
| Brand | Korker Sausages Ltd |
| Manufacturer Product Code | KORKERPIGSINBLANKETS/4.54KG |
| Product Type | Food |
| Product Category | Pies, Sausage Rolls, Savouries |
| Storage Type | Frozen |
| Erudus ID | 89f5f218da614727836d9204f0388a32 |
| Specification Type | Generic |



INGREDIENTS

Ingredient Declaration

Ingredients: Sausages (93%) [Pork (60%), Water, Rusk [**WHEAT** Flour (contains Calcium Carbonate, Iron, Niacin, Thiamine), Water, Salt, Yeast], Pork Fat, Salt, Dried Sage, White Pepper, Dried Ginger, Black Pepper, Preservative (Sodium **SULPHITE**), Stabiliser (Diphosphates). Filled into UK Edible Beef Protein Casings [Beef Protein, Stabiliser (Cellulose)]. Smoked Bacon Strips with added water [Pork (90%), Water, Whey Powder (**MILK**), Flavourings, **MILK** Protein, White Pepper, Dextrose, Salt, Dried Glucose Syrup, Stabiliser (Triphosphates), Acidity Regulator (Sodium Citrates), Antioxidants (Sodium Ascorbate, Asorbic Acid)].

For allergens including cereals containing gluten, see ingredients highlighted in **bold**.

ALLERGENS

Product Contains:

| | | | |
|---|-----|--------------------------------------|-----|
| Celery/Celeriac | No | Mustard | No |
| Cereals Containing Gluten | Yes | Nuts (Tree) | No |
| Barley | No | Almond nuts | No |
| Oats | No | Brazil nuts | No |
| Rye | No | Cashew nuts | No |
| Wheat (including Spelt and Khorasan) | Yes | Hazelnuts | No |
| Crustacea | No | Macadamia (Queensland) nuts | No |
| Eggs | No | Pecan nuts | No |
| Fish | No | Pistachio nuts | No |
| Lupin | No | Walnuts | No |
| Milk | Yes | Peanuts | No |
| Molluscs | No | Sesame Seeds | No |
| | | Soybeans | No |
| | | Sulphur Dioxide and Sulphites | Yes |

SUPPLEMENTARY INGREDIENT INFORMATION ADDITIVES

| | |
|-----------------------|----|
| GM Protein/DNA | No |
|-----------------------|----|

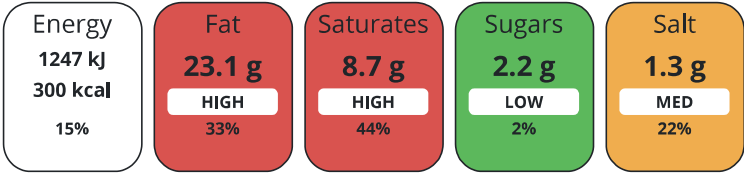
Product Contains:

DIET SUITABILITY

| | | | |
|-------------------|----|------------------------|----|
| Vegan Diet | No | Vegetarian Diet | No |
| Halal Diet | No | Kosher Diet | No |

NUTRITIONAL
INFORMATION AS
SOLD

Each 100g/ml portion contains:



of your reference intake.

Typical values per 100g/ml : Energy 300kcal / 1247kJ

| Nutrient | per 100g | RI per 100g |
|--------------------|----------|-------------|
| Energy (kJ) | 1247 kJ | 15% |
| Energy (kcal) | 300 kcal | 15% |
| Fat | 23.1 g | 33% |
| of which Saturates | 8.7 g | 44% |
| Carbohydrate | 7.9 g | 3% |
| of which Sugars | 2.2 g | 2% |
| Protein | 14.7 g | 29% |
| Salt | 1.3 g | 22% |

SUPPLEMENTARY
NUTRITIONAL
INFORMATION

HANDLING &
STORAGE
INFORMATION

Directions For Use

Oven cook from frozen. Pre-heat oven to 190/Fan 170/Gas 5. Remove all outer packaging and place on banking tray in centre of over. Cook for 30-35mins. This is a raw product, cook until piping hot. Do not reheat.

Storage Instructions

Store at -18 degrees C or below. Once defrosted do not refreeze.

| | |
|------------------------------------|----------|
| Shelf Life from Time of Production | 365 Days |
| Shelf Life Once Defrosted | 1 Days |

SALSA (Safe & Local Supplier Approval)

ACCREDITATIONS/
CERTIFICATIONS/
ASSURANCE
SCHEMES
ORIGIN

| | |
|----------------------------------|-------------------------|
| Product Country of Origin | United Kingdom |
| Origin of the Primary Ingredient | Belgium, United Kingdom |

PRODUCT
CHARACTERISTICS
CONFIGURATION

| | |
|--|--------------------------|
| Standards Testing | |
| Case Configuration | Inner Pack Configuration |
| Total Quantity of Inner Components in Outer Case | 6 Units |
| Inner Component | |
| Variable Weight Consumer Item | Yes |
| Outer Case | |
| Outer Case Gross Weight | 8.16 kg |
| Outer Case Net Weight | 8.16 kg |

PRODUCT
WEIGHTS

PRODUCT
DIMENSIONS

| | |
|------------------------|--------|
| Inner Component | |
| Inner Component Depth | 330 mm |
| Inner Component Width | 60 mm |
| Inner Component Height | 260 mm |
| Outer Case | |
| Outer Case Depth | 445 mm |
| Outer Case Width | 310 mm |
| Outer Case Height | 130 mm |

PALLET
INFORMATION

| | | | |
|------------------------------------|-----------|---------------|---------|
| Quantity of Cases Per Pallet Layer | 17 Cases | Pallet Height | 1.2 MTR |
| Quantity of Layers Per Pallet | 6 Layers | | |
| Quantity of Cases Per Pallet | 102 Cases | | |

SAFETY &
WARNINGS

OTHER
INFORMATION
CONTACT
INFORMATION

Address
Korker Sausages Ltd
Branns Drive
High Street
Rolvenden, Kent
TN17 4LN
England

P: (Phone) 01580 241307

Commercial Contact

Ed Hoad
Director
enquiries@korker-sausages.co.uk

P: (Phone) 01580 241307

The information on the [Erudus System](#) has been supplied by the manufacturers of the products and, whilst the owners of the Erudus System take steps to ensure the information is regularly updated, they give no warranty and no guarantee that the information is accurate. Product information and ingredients may change, please always read product labels carefully in addition to using the information provided by Erudus.

We do not accept liability for any inaccuracies or incorrect information contained on this site.
Please visit <http://www.erudus.com/terms-and-conditions> for full terms and conditions.