

Changed Nov 06, 2025 16:01

Reviewed Nov 06, 2025 16:01

Erudus ID 19dfa1dfe0c1496f8a9a919439c1bbdd

Version 1.0

Status Published

# Et Voila Minted Pea Soup 4 x 1kg

Minted Pea Soup

## PRODUCT DESCRIPTION

Minted Pea Soup

Brand	Et Voila Ltd
Manufacturer Product Code	EV122
Product Type	Food
Product Category	Other
Storage Type	Frozen
Erudus ID	19dfa1dfe0c1496f8a9a919439c1bbdd
Specification Type	Generic

Inner Component GTIN	5060778192531
Manufacturer Component Code	EV122
Outer Case GTIN	15060778192538



## INGREDIENTS

### Ingredient Declaration

Water, Peas (44%), Onion, Butter (MILK), Vegetable Stock (Water, Onion Powder, Carrot Juice Powder, Tomato Powder, Herb (Lovage), Dried Glucose Syrup, Yeast Extract, Salt, Sugar, Chicory Extract, Rapeseed Oil, Natural Flavourings), Modified Maize Starch, Garlic Granules, Mint, Salt, Black Cracked Pepper, Thyme.

## ALLERGENS

### Product Contains:

Celery/Celeriac	No	Mustard	No
Cereals Containing Gluten	No	Nuts (Tree)	No
Barley	No	Almond nuts	No
Oats	No	Brazil nuts	No
Rye	No	Cashew nuts	No
Wheat (including Spelt and Khorasan)	No	Hazelnuts	No
Crustacea	No	Macadamia (Queensland) nuts	No
Eggs	No	Pecan nuts	No
Fish	No	Pistachio nuts	No
Lupin	No	Walnuts	No
Milk	Yes	Peanuts	No
Molluscs	No	Sesame Seeds	No
		Soybeans	No
		Sulphur Dioxide and Sulphites	No

### Additional Allergen Information

Allergens handled on site: Milk, Mustard, Soybeans, Cereal containing Gluten(Barley) and Sulphites.

SUPPLEMENTARY  
INGREDIENT  
INFORMATION

Palm Oil	No
GM Protein/DNA	No

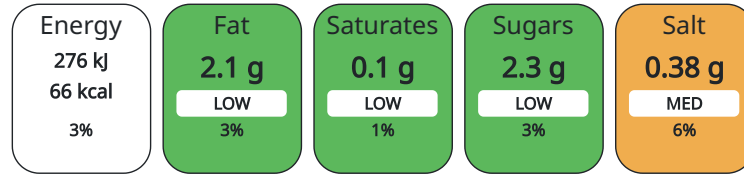
ADDITIVES

Product Contains:

Artificial Preservatives	No
Artificial Sweeteners	No

NUTRITIONAL  
INFORMATION AS  
SOLD

Each 100g/ml portion contains:



of your reference intake.

Typical values per 100g/ml : Energy 66kcal / 276kJ

Nutrient	per 100g	RI per 100g	per 100g serving	RI per 100g serving
Energy (kJ)	276 kJ	3%	276	3%
Energy (kcal)	66 kcal	3%	66	3%
Fat	2.1 g	3%	2.1 g	3%
of which Saturates	0.1 g	1%	0.1 g	1%
of which Mono-unsaturates	< 0.1 g		0.1 g	
of which Polyunsaturates	< 0.1 g		0.1 g	
Carbohydrate	8.8 g	3%	8.8 g	3%
of which Sugars	2.3 g	3%	2.3 g	3%
Fibre	< 0.5 g		0.5 g	
Protein	3 g	6%	3 g	6%
Salt	0.38 g	6%	0.38 g	6%
Serving Size	100 g			

HANDLING &  
STORAGE  
INFORMATION

Directions For Use

Ensure product is pipping hot before consuming.

Storage Instructions

Frozen Storage. Once defrost, keep chilled and use within 14 days.

Storage Instructions After Opening

Once opened, keep chilled, use within 3 days and by the date shown on label.

Shelf Life from Time of Production	365 Days
Shelf Life From Opening	3 Days
Shelf Life Once Defrosted	14 Days

ACCREDITATIONS/  
CERTIFICATIONS/  
ASSURANCE  
SCHEMES  
ORIGIN

SALSA (Safe & Local Supplier Approval)

Product Country of Origin	United Kingdom
Origin of the Primary Ingredient	Not Applicable

PRODUCT  
CHARACTERISTICS

Standards Testing

Do you undertake trend analysis of microbiological results?	Yes	Is shelf life testing undertaken?	Yes
---	-----	-----------------------------------	-----

Microbiological Standards

Organism	Description	Frequency	Target	Maximum	Sample (g or ml)
Bacillus Cereus (cfu/g or ml)		Occasionally	<20	100	100
E. Coli (cfu/g or ml)		Occasionally	<10	100	100
Listeria SPP (cfu/g or ml)		Occasionally	<0	0	100
Salmonella (cfu/g or ml)		Occasionally	<0	0	100
Yeast (cfu/g or ml)		Occasionally	<100	500	100
Moulds (cfu/g or ml)		Occasionally	<100	500	100

#### Analytical Standards

Test	Description	Frequency	Target	Range	Sample (g or ml)
pH		Every Batch	<4.2	2.8 to 4.2	100

#### CONFIGURATION

Case Configuration

Inner Pack Configuration

<b>Variable Inner Components in Outer Case</b>	Yes
<b>Total Quantity of Inner Components in Outer Case</b>	4 Units
<b>Is the Outer Case Splittable?</b>	Yes

#### PRODUCT WEIGHTS

Inner Component

<b>Inner Component Weight</b>	1 kg
<b>Inner Component Volume</b>	4 ml
<b>Net Drained Weight</b>	1 kg

Outer Case

<b>Outer Case Gross Weight</b>	4.25 kg
<b>Outer Case Net Weight</b>	4 kg

#### PRODUCT DIMENSIONS

Inner Component

<b>Inner Component Depth</b>	200 mm
<b>Inner Component Width</b>	250 mm
<b>Inner Component Height</b>	5 mm

Outer Case

<b>Outer Case Depth</b>	350 mm
<b>Outer Case Width</b>	320 mm
<b>Outer Case Height</b>	68 mm

#### PALLET INFORMATION

<b>Quantity of Cases Per Pallet Layer</b>	6 Cases	<b>Pallet Type</b>	Euro Pallet
<b>Quantity of Layers Per Pallet</b>	25 Layers	<b>Pallet Height</b>	1.54 MTR
<b>Quantity of Cases Per Pallet</b>	150 Cases	<b>Pallet Gross Weight</b>	620 kg

#### PACKAGING

Inner Component Packaging

Type	Materials	Weight	Recycled Material %	Recyclable	Returnable	Composite
Bag	Plastic / PE (Polyethylene)	13 g				

Outer Case Packaging

Type	Materials	Weight	Recycled Material %	Recyclable	Returnable	Composite
Box	Paper/Cardboard / Cardboard	34 g		Yes	No	No
Shrink Wrap	Plastic	10 g				

OTHER  
INFORMATION  
CONTACT  
INFORMATION

Address

Et Voila Ltd  
1st Floor Chancery Lane  
Retford  
Nottinghamshire  
DN22 6DF  
United Kingdom

P: (Phone) 07496118569

Complaints Contact

Agnieszka  
Quality Technician  
qa@etvoila-fs.co.uk

P: (Phone) 07496118569

Technical Contact

Roxana Ionescu  
Quality Manager  
roxanna@etvoila-fs.co.uk

P: (Phone) 07496118569

Commercial Contact

Roxana Ionescu  
Factory manager  
qc@etvoila-fs.co.uk

P: (Phone) 07496118569

The information on the [Erudus System](#) has been supplied by the manufacturers of the products and, whilst the owners of the Erudus System take steps to ensure the information is regularly updated, they give no warranty and no guarantee that the information is accurate. Product information and ingredients may change, please always read product labels carefully in addition to using the information provided by Erudus.

We do not accept liability for any inaccuracies or incorrect information contained on this site.  
Please visit <http://www.erudus.com/terms-and-conditions> for full terms and conditions.