



simply
clever
food

GlenGlaze® 12 x 1L

PRODUCT CODE: 10000314
PACK SIZE: 12 x 1L
ISSUE DATE: 14/03/2023
CREATED BY: SAB

PRODUCT INFORMATION DOCUMENT

WARRANTY

The intellectual property applied in the development of this product is the sole property of Macphie Ltd. and as such this specification may not be disclosed to a third party without the prior written agreement from the Quality Department of Macphie.

This product conforms to existing UK/EU statutory regulations and codes of practice. Where stated Macphie will try to maintain suppliers and country of origins for the raw materials used in the formulation, however, we reserve the right to change suppliers and the source to meet the demands of quality, price and availability in order to maintain continuity of supply to our customers. This specification was correct at the time of publishing.

Product Information Documents are always available from Macphie upon request from quality.standards@macphie.com

Should no feedback be provided to Macphie within 5 working days, customer acceptance of this PID will be assumed.

Macphie Ltd, Glenbervie, Stonehaven, AB39 3YG, Scotland.

Macphie (Europe) Ltd, Trinity House, Charleston Road, Ranelagh, Dublin 6, Ireland

1. PRODUCT INFORMATION

1.1 Product Description

A heat treated ready-to-use glaze made with a mixture of vegetable oil and milk proteins.

1.2 Commodity Code

2106102090

Product Country of Origin

UK

1.3 Colour/Appearance

Yellow liquid conforming to previously accepted material.

1.4 Texture

Liquid

1.5 Flavour

Neutral flavour, conforming to previously accepted material.

1.6 Product Attributes

Performance/Organoleptic
pH (ambient)

Acceptable Levels

Acceptable
8.7 ± 0.3

2. INGREDIENT LISTING

2.1 The following gives the U.K. Ingredient Declaration for inclusion in customers finished product "Ingredient Listing":-

Ingredient	Source	E No	Country of Origin	Broadband
Water	Potable Mains		UK	60-80%
Vegetable Oil	Rapeseed		Australia, Estonia, France, Ireland, Latvia, Lithuania, UK, Uruguay	<10%
Modified Starch	Tapioca		Germany	<10%
Dextrose	Maize, Wheat*		Bulgaria, Croatia, France, Hungary, Italy, Romania	<2%
Emulsifiers				<2%
Mono- and diglycerides of fatty acids	Palm	E471	Malaysia, Denmark, Indonesia	
Lecithin	Sunflower	E322	Netherlands	
Pea Protein	Vegetable		France	<1%
Milk Proteins	Cow's Milk		Ireland, United Kingdom	<1%
Acidity Regulator				<1%
Trisodium Phosphate		E339 (iii)	Germany	
Colour				Trace
Beta-Carotene	Plant	E160a(iii)	Switzerland	

For allergy advice, see ingredients in **bold**

*In accordance with regulation (EU) No 1169/2011 Annex II; wheat based glucose syrups, including dextrose, are exempt from allergen labelling. Our supplier has confirmed <20mg/kg of gluten in the material. We do not however conduct internal gluten testing of our products.

For any products containing palm oil; please see despatch notes/invoices for RSPO palm oil sustainability status.

3. NUTRITION INFORMATION

3.1 Typical Values Per 100ml of Product

Nutrient	Amount	Units
Energy (kJ)	594	kJ
Energy (kcal)	142	kcal
Fat	11	g
of which saturates	1.7	g
Carbohydrates	10	g
of which sugars	1.8	g
Fibre	0	g
Protein	1.1	g
Salt	0.33	g

Source: Analysis (supplier) /Calculation (McCance & Widdowson)

4.1 ALLERGEN INFORMATION

	Recipe Contains	Used on Line	Used on Site
Cereals containing Gluten (wheat, rye, barley, spelt, oats, kamut or their hybridised strains) and products thereof	No	Yes	Yes
Wheat and products thereof	No	Yes	Yes
Rye and products thereof	No	No	No
Barley and products thereof	No	Yes	Yes
Spelt and products thereof	No	No	No
Oats and products thereof	No	No	Yes
Kamut and products thereof	No	No	No
Crustaceans and products thereof	No	No	No
Molluscs and products thereof	No	No	No
Eggs and products thereof	No	Yes	Yes
Fish and products thereof	No	No	No
Peanuts and products thereof	No	No	No
Soybeans and products thereof	No	Yes	Yes
Milk and milk products thereof (including lactose)	Yes	Yes	Yes
Nuts (Almond, Hazelnut, Walnut, Cashew, Pecan nut, Brazil nut, Pistachio nut, Macadamia nut and Queensland nut) and products thereof	No	No	No
Celery and products thereof	No	Yes	Yes
Mustard and products thereof	No	No	No
Sesame seeds and products thereof	No	No	No
Lupin and products thereof	No	No	No
Sulphur dioxide and sulphites (E220-E228) at concentrations of more than 10 mg/kg or 10 mg/litre expressed as SO ₂	No	Yes	Yes

4.2 POSSIBLE ALLERGEN CROSS CONTAMINATION DURING PROCESSING

May also contain	None
------------------	------

“This product information document has been prepared in accordance with the labelling requirements of Directive 2003/89/EC and amendments thereof. The information detailed within section 4 outlines the physical presence of allergens (by addition) in accordance with Annex IIIa of the aforementioned directive alongside EU Food Information for Consumers Regulation No. 1169/2011.”



GlenGlaze® 12 x 1L
ISSUE DATE:

14/03/2023

4.2 SUPPLEMENTARY DATA

	Contains	
Animal products (other than those listed above) and products thereof	No	
Maize and products thereof	Yes	
Colours - non natural	No	
Colours - natural	Yes	
Flavours - non natural	No	
Flavours - natural	No	
GM materials	No	
Palm oil	Yes	
	Suitable For	Certified
Vegetarians	Yes	No
Vegans	No	No
Coeliacs	Yes	Yes

Information contained within this document is based exclusively on the product as sold. Full consideration should therefore be given to product make-up/finished product standard.

5. STORAGE CONDITIONS AND SHELF LIFE

5.1 Unopened			
Product Code	Pack Size	Shelf Life (sealed)	
10000314	12 x 1L	365	days from date of manufacture. Clearly marked with "Best Before" date.
Storage Conditions	Unopened, store in a cool, dry place (<20°C)		

5.2 Opened	
Shelf Life	7 days
Storage Conditions	Store in hygienic chill

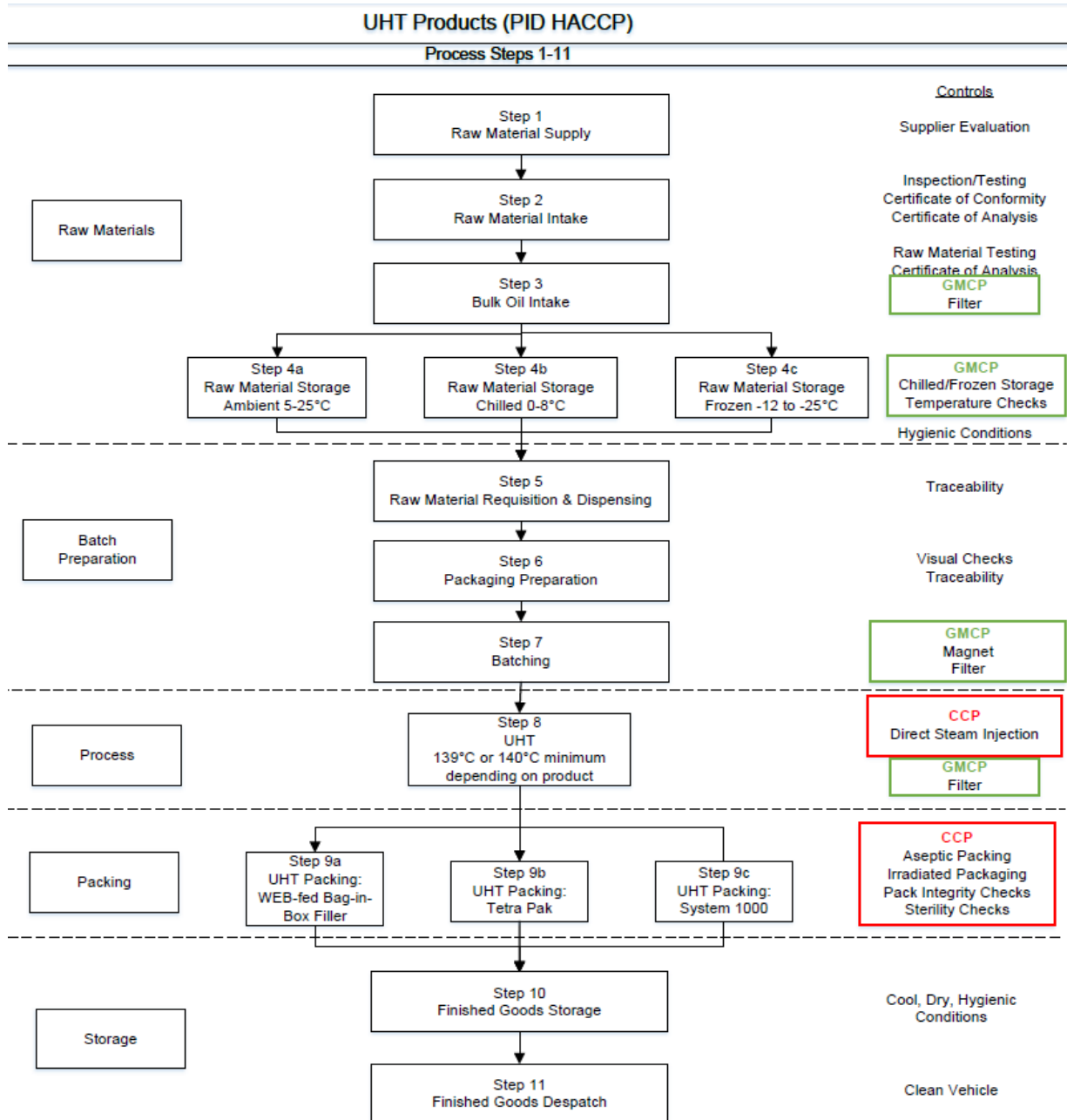
5.3 Freeze Thaw Stability
Freeze thaw stable in application only, not in pack

5.4 Recommended Make Up Instructions/Use
See product label and/or Technical Information Sheet. Available from www.macphie.com or from the Customer Service Team (Customer.Service@macphie.com)

6. FOOD SAFETY DATA

Free from all viable micro-organisms until opened

7. **HACCP FLOW CHART**





simply
clever
food

GlenGlaze® 12 x 1L

ISSUE DATE:

14/03/2023

8. **PACKAGING**

8.1	Packaging						
	Inner Packaging		Dimensions (m)		Weights (kg)		
		Generic 1lt Tetra Paper FC	Length	0.094	Paper	0.021	
			Width	0.06	Plastic	0.003	
	Colour	Various	Height	0.165	Metal	0.001	
	Recyclable?	Yes			Net	0.025	
	Outer Packaging		Dimensions (m)		Weights (kg)		
		12x1lt Standard White UHT Tray	Length	0.388	Paper	0.074	
			Width	0.199	Plastic	0	
	Colour	White	Height	0.091	Metal	0	
	Recyclable?	Yes			Net	0.074	
	Outer Packaging		Dimensions (m)		Weights (kg)		
		Tetra Tray Wrap	Length	n/a	Paper	0	
			Width	n/a	Plastic	0.016	
	Colour	Clear	Height	n/a	Metal	0	
	Recyclable?	No			Net	0.016	
	Label (Outer Packaging)		Dimensions (m)		Weights (kg)		
		Tetra Tray Label	Length	0.017	Paper	0.001	
			Width	0.013	Plastic	0	
	Colour	White	Height	n/a	Metal	0	
	Recyclable?	Yes			Net	0.001	
	Transport Packaging						
	Item	Material	Colour		Weights (kg)		
	Pallet Cover	Plastic	Transparent		0.064		
	Pallet Stretchwrap	Plastic	Transparent		0.450		
	Pallet Corner Protectors	Paper	Brown		0.051		
	Pallet Layerboard	Paper	Brown		0.379		
8.2	Pallet Information		Blue				
8.3	Sealing		Heat Sealed				
8.4	Dimensions of Unit	Length	0.208	Width	0.402	Height 0.17	
8.5	Pallet Configuration		Units per layer		15		
			Number of layers		5		
			Additional		0		
8.6	GTIN		Barcode		GTIN Series		
			Inner	5017506610058		EAN 13	
			Outer	05017506961006		GTIN 14	

8.7	Traceability	Each unit is labelled with a Macphie label detailing product name, product code, product weight (minimum), best before date (DD/MMM/YY), and system-generated 6 digit lot/batch No. Sequential unit number is ink jetted directly onto the unit.
------------	---------------------	--