

# Et Voila Leek & Potato 4 x 1kg

Leek & Potato Soup

PRODUCT DESCRIPTION

Leek & Potato Soup

Brand	Et Voila Ltd
Manufacturer Product Code	EV116
Product Type	Food
Product Category	Other
Storage Type	Frozen
Erudus ID	0465736b446c4f61893199f398b3b3b0
Specification Type	Generic

Inner Component GTIN	5060778192470
Manufacturer Component Code	EV116
Outer Case GTIN	15060778192477



INGREDIENTS

**Ingredient Declaration**  
Water, Potato (29%), Leek (6%), Double Cream (MILK), White Wine (SULPHITES), Butter (MILK), Vegetable Stock (Water, Onion Powder, Carrot Juice Powder, Tomato Powder, Herb (Lovage), Dried Glucose Syrup, Yeast Extract, Salt, Sugar, Chickory Extract, Rapeseed Oil, Natural Flavouring), Modified Maize Starch, Garlic Granules, Cracked Black Pepper, Salt, Thyme.

ALLERGENS

Product Contains:			
Celery/Celeriac	No	Mustard	No
Cereals Containing Gluten	No	Nuts (Tree)	No
Barley	No	Almond nuts	No
Oats	No	Brazil nuts	No
Rye	No	Cashew nuts	No
Wheat (including Spelt and Khorasan)	No	Hazelnuts	No
Crustacea	No	Macadamia (Queensland) nuts	No
Eggs	No	Pecan nuts	No
Fish	No	Pistachio nuts	No
Lupin	No	Walnuts	No
Milk	Yes	Peanuts	No
Molluscs	No	Sesame Seeds	No
		Soybeans	No
		Sulphur Dioxide and Sulphites	Yes

**Additional Allergen Information**  
Allergens handled on site: Milk, Mustard, Soybeans, Cereal containing Gluten(Barley) and Sulphites.

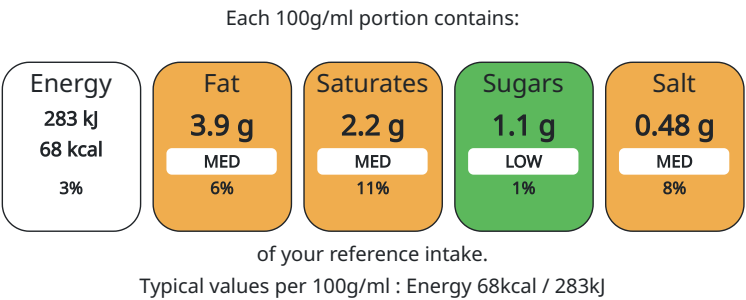
SUPPLEMENTARY  
INGREDIENT  
INFORMATION

Palm Oil	No
GM Protein/DNA	No

ADDITIVES

Product Contains:	Artificial Preservatives	No
	Artificial Sweeteners	No

NUTRITIONAL  
INFORMATION AS  
SOLD



Nutrient	per 100g	RI per 100g	per 100g serving	RI per 100g serving
Energy (kJ)	283 kJ	3%	283	3%
Energy (kcal)	68 kcal	3%	68	3%
Fat	3.9 g	6%	3.9 g	6%
of which Saturates	2.2 g	11%	2.2 g	11%
of which Mono-unsaturates	< 0.1 g		0.1 g	
of which Polyunsaturates	< 0.1 g		0.1 g	
Carbohydrate	7.3 g	3%	7.3 g	3%
of which Sugars	1.1 g	1%	1.1 g	1%
Fibre	< 0.5 g		0.5 g	
Protein	0.9 g	2%	0.9 g	2%
Salt	0.48 g	8%	0.48 g	8%
Serving Size	100 g			

HANDLING &  
STORAGE  
INFORMATION

Directions For Use	Ensure product is pipping hot before consuming.
Storage Instructions	Frozen Storage. Once defrost, keep chilled and use within 14 days.
Storage Instructions After Opening	Once opened, keep chilled, use within 3 days and by the date shown on label.

Shelf Life from Time of Production	365 Days
Shelf Life From Opening	3 Days
Shelf Life Once Defrosted	14 Days

ACCREDITATIONS/  
CERTIFICATIONS/  
ASSURANCE  
SCHEMES  
ORIGIN

SALSA (Safe & Local Supplier Approval)	
Product Country of Origin	United Kingdom
Origin of the Primary Ingredient	Not Applicable

PRODUCT  
CHARACTERISTICS

Standards Testing			
Do you undertake trend analysis of microbiological results?	Yes	Is shelf life testing undertaken?	Yes
Microbiological Standards			

	Organism	Description	Frequency	Target	Maximum	Sample (g or ml)	
	Bacillus Cereus (cfu/g or ml)		Occasionally	<20	100	100	
	E. Coli (cfu/g or ml)		Occasionally	<10	100	100	
	Listeria SPP (cfu/g or ml)		Occasionally	<0	0	100	
	Salmonella (cfu/g or ml)		Occasionally	<0	0	100	
	Yeast (cfu/g or ml)		Occasionally	<100	500	100	
	Moulds (cfu/g or ml)		Occasionally	<100	500	100	
	Analytical Standards						
	Test	Description	Frequency	Target	Range	Sample (g or ml)	
	pH		Every Batch	<4.2	2.8 to 4.2	100	
	Case Configuration			Inner Pack Configuration			
	Variable Inner Components in Outer Case		Yes				
	Total Quantity of Inner Components in Outer Case		4 Units				
	Is the Outer Case Splittable?		Yes				
	Inner Component						
	Inner Component Weight		1 kg				
	Inner Component Volume		4 ml				
	Net Drained Weight		1 kg				
	Outer Case						
	Outer Case Gross Weight		4.25 kg				
	Outer Case Net Weight		4 kg				
	Inner Component						
	Inner Component Depth		200 mm				
	Inner Component Width		250 mm				
	Inner Component Height		5 mm				
	Outer Case						
	Outer Case Depth		350 mm				
	Outer Case Width		320 mm				
	Outer Case Height		68 mm				
	Quantity of Cases Per Pallet Layer						
	Quantity of Layers Per Pallet		25 Layers	Pallet Type		Euro Pallet	
	Quantity of Cases Per Pallet		150 Cases	Pallet Height		1.54 MTR	
				Pallet Gross Weight		620 kg	
	Inner Component Packaging						
	Type	Materials	Weight	Recycled Material %	Recyclable	Returnable	Composite
	Bag	Plastic / PE (Polyethylene)	13 g				
	Outer Case Packaging						
	Type	Materials	Weight	Recycled Material %	Recyclable	Returnable	Composite
	Box	Paper/Cardboard / Cardboard	34 g		Yes	No	No
	Shrink Wrap	Plastic	10 g				

OTHER  
INFORMATION  
CONTACT  
INFORMATION

Address  
Et Voila Ltd  
1st Floor Chancery Lane  
Retford  
Nottinghamshire  
DN22 6DF  
United Kingdom

P: (Phone) 07496118569

Complaints Contact  
Agnieszka  
Quality Technician  
qa@etvoila-fs.co.uk

P: (Phone) 07496118569

Technical Contact  
Roxana Ionescu  
Quality Manager  
roxanna@etvoila-fs.co.uk

P: (Phone) 07496118569

Commercial Contact  
Roxana Ionescu  
Factory manager  
qc@etvoila-fs.co.uk

P: (Phone) 07496118569

The information on the [Erudus System](#) has been supplied by the manufacturers of the products and, whilst the owners of the Erudus System take steps to ensure the information is regularly updated, they give no warranty and no guarantee that the information is accurate. Product information and ingredients may change, please always read product labels carefully in addition to using the information provided by Erudus.

We do not accept liability for any inaccuracies or incorrect information contained on this site.  
Please visit <http://www.erudus.com/terms-and-conditions> for full terms and conditions.