



**SIMPLY  
CLEVER  
FOOD**

**Genoese Mix 12.5kg**

**PRODUCT CODE:** 10000082  
**PACK SIZE:** 12.5kg  
**ISSUE DATE:** 02/12/2025  
**CREATED BY:** JES

## PRODUCT INFORMATION DOCUMENT

### WARRANTY

The intellectual property applied in the development of this product is the sole property of Macphie Ltd. and as such this specification may not be disclosed to a third party without the prior written agreement from the Quality Department of Macphie.

This product conforms to existing UK/EU statutory regulations and codes of practice. Where stated Macphie will try to maintain suppliers and country of origins for the raw materials used in the formulation, however, we reserve the right to change suppliers and the source to meet the demands of quality, price and availability in order to maintain continuity of supply to our customers. This specification was correct at the time of publishing.

Product Information Documents are always available from Macphie upon request from [quality.standards@macphie.com](mailto:quality.standards@macphie.com)

When applied in accordance with the specified formulation (TIS), all additive concentrations comply with the maximum permissible levels as defined by regulatory standards

Should no feedback be provided to Macphie within 5 working days, customer acceptance of this PID will be assumed.

Macphie Ltd, Glenbervie, Stonehaven, AB39 3YG, Scotland.

Macphie (Europe) Ltd., 5th Floor, Block D, Iveagh Court, Harcourt Rd, Dublin 2, D02 VH94, Ireland

### 1. PRODUCT INFORMATION

#### 1.1 Product Description

Genoese Mix has a clean-cutting crumb and light and even texture. With the easy-to-deposit and easy-to-spread batter, our mix provides a convenient and consistent starting point for baking firm favourites and on-trend treats.

#### 1.2 Commodity Code

1901200000

#### Product Country of Origin

UK

#### Site of Manufacture

Glenbervie (GB)

#### 1.3 Colour/Appearance

Beige powder conforming to previously accepted material.

#### 1.4 Texture

Crumble type product

#### 1.5 Flavour

Sweet, clean flavour, when baked

#### 1.6 Product Attributes

Performance/Organoleptic

#### Acceptable Levels

Acceptable



# SIMPLY CLEVER FOOD

Genoese Mix 12.5kg

ISSUE DATE:

02/12/2025

## 2.1 INGREDIENT LISTING

| Ingredient   | Source     | E No     | Country of Origin   | Broadband |
|--|------------|----------|---|-----------|
| Sugar  | Sugar Beet |          | Germany, Belgium, France, Guatemala, UK   | 40-60%    |
| <b>Wheat</b> Flour ( <b>Wheat</b> Flour, Calcium, Niacin, Iron, Folic Acid, Thiamin) | Wheat      |          | Denmark, China, India, Sweden, United States, UK                                | 20-40%    |
| Vegetable Oil  | Rapeseed   |          | Australia, Estonia, France, Ireland, Latvia, Lithuania, United Kingdom, Uruguay | <5%       |
| Dried <b>Egg</b> White   | Hen's Eggs |          | France, Portugal, Spain   | <5%       |
| Dried <b>Egg</b> Yolk  | Hen's Eggs |          | France, Portugal, Spain   | <5%       |
| Modified Starch  | Waxy Maize | E1422    | France, Hungary, Italy  | <2%       |
| Whey Powder ( <b>Milk</b> )  | Milk       |          | Ireland, UK   | <2%       |
| Emulsifiers  |            |          |   | <2%       |
| Propane-1,2-diol esters of fatty acids   | Palm Oil   | E477     | Malaysia  |           |
| Mono- and diglycerides of fatty acids  | Palm Oil   | E471     | Malaysia, Papua New Guinea, Colombia, Indonesia                                 |           |
| Sodium stearoyl-2-lactylate  | Palm       | E481     | Malaysia, Denmark, Indonesia  |           |
| Raising Agents   |            |          |   | <2%       |
| Disodium diphosphate   |            | E450(i)  | United States   |           |
| Potassium bicarbonate  |            | E501(ii) | China, Germany, France, UK  |           |
| <b>Milk</b> Protein  | Cow's Milk |          | Europe, Iceland, Liechtenstein, Norway, UK                                      | <1%       |
| Stabiliser   |            |          |   | <1%       |
| Hydroxypropyl methyl cellulose   | Wood Pulp  | E464     | Germany, France, Norway, United States  |           |
| <b>Wheat</b> Gluten  | Wheat      |          | Germany   | <1%       |
| Flavouring   | Natural    |          | Netherlands   | <1%       |
| Salt   | Mineral    |          | UK  | <1%       |

For any products containing palm oil; please see despatch notes/invoices for RSPO palm oil sustainability status.

## 2.2 INGREDIENT DECLARATION

The following gives the U.K. Ingredient Declaration for inclusion in customers finished product "Ingredient Listing":-

Sugar, **Wheat** Flour (**Wheat** Flour, Calcium, Niacin, Iron, Folic Acid, Thiamin), Vegetable Oil (Rapeseed), Dried **Egg** White, Dried **Egg** Yolk, Modified Starch, Whey Powder (**Milk**), Emulsifiers (Propane-1,2-diol esters of fatty acids, Mono- and diglycerides of fatty acids, Sodium stearoyl-2-lactylate), Raising Agents (Disodium diphosphate, Potassium bicarbonate), **Milk** Protein, Stabiliser (Hydroxypropyl methyl cellulose), **Wheat** Gluten, Flavouring, Salt.

For allergy advice, including cereals containing gluten, see ingredients in **bold**



# SIMPLY CLEVER FOOD

Genoese Mix 12.5kg

ISSUE DATE:

02/12/2025

## 3. NUTRITION INFORMATION

### 3.1 Typical Values Per 100g of Product

| Nutrient           | Amount | Units |
|--------------------|--------|-------|
| Energy (kJ)        | 1762   | kJ    |
| Energy (kcal)      | 417    | kcal  |
| Fat                | 6.8    | g     |
| of which saturates | 1.9    | g     |
| Carbohydrates      | 80     | g     |
| of which sugars    | 47     | g     |
| Fibre              | 1.9    | g     |
| Protein            | 7.5    | g     |
| Salt               | 0.61   | g     |

Source: Analysis (supplier) /Calculation (McCance & Widdowson)



# SIMPLY CLEVER FOOD

Genoese Mix 12.5kg

ISSUE DATE:

02/12/2025

## 4.1 ALLERGEN INFORMATION

|  | Recipe<br>Contains | Used on<br>Line | Used on<br>Site |
|--|--------------------|-----------------|-----------------|
| Cereals containing Gluten (wheat, rye, barley, spelt, oats, kamut or their hybridised strains) and products thereof                  | Yes                | Yes             | Yes             |
| Wheat and products thereof   | Yes                | Yes             | Yes             |
| Rye and products thereof   | No                 | No              | No              |
| Barley and products thereof  | No                 | No              | Yes             |
| Spelt and products thereof   | No                 | No              | No              |
| Oats and products thereof  | No                 | Yes             | Yes             |
| Kamut and products thereof   | No                 | No              | No              |
| Crustaceans and products thereof   | No                 | No              | No              |
| Molluscs and products thereof  | No                 | No              | No              |
| Eggs and products thereof  | Yes                | Yes             | Yes             |
| Fish and products thereof  | No                 | No              | No              |
| Peanuts and products thereof   | No                 | No              | No              |
| Soybeans and products thereof  | No                 | Yes             | Yes             |
| Milk and milk products thereof (including lactose)   | Yes                | Yes             | Yes             |
| Nuts (Almond, Hazelnut, Walnut, Cashew, Pecan nut, Brazil nut, Pistachio nut, Macadamia nut and Queensland nut) and products thereof | No                 | No              | No              |
| Celery and products thereof  | No                 | No              | No              |
| Mustard and products thereof   | No                 | No              | No              |
| Sesame seeds and products thereof  | No                 | No              | No              |
| Lupin and products thereof   | No                 | No              | No              |
| Sulphur dioxide and sulphites (E220-E228) at concentrations of more than 10 mg/kg or 10 mg/litre expressed as SO <sub>2</sub>        | No                 | Yes             | Yes             |

## 4.2 POSSIBLE ALLERGEN CROSS CONTAMINATION DURING PROCESSING

| May also contain  | Soya |
|---|------|
| This product is made on shared lines that process products containing allergenic ingredients and therefore may contain these allergens (used on the line as stated above). The level of cross contact can vary. We strongly recommend our customers pass this allergen information forward and include on their own product labels. |      |



# SIMPLY CLEVER FOOD

Genoese Mix 12.5kg

ISSUE DATE:

02/12/2025

## 4.3 SUPPLEMENTARY DATA

|  |              | Contains  |
|--|--------------|-----------|
| Animal products (other than those listed above) and products thereof |              | Yes       |
| Maize and products thereof   |              | Yes       |
| Colours - non natural  |              | No        |
| Colours - natural  |              | No        |
| Flavours - non natural   |              | No        |
| Flavours - natural   |              | Yes       |
| GM materials   |              | No        |
| Palm oil   |              | Yes       |
|  | Suitable For | Certified |
| Vegetarians  | No           | No        |
| Vegans   | No           | No        |
| Coeliacs   | No           | No        |
| Halal  | Yes          | No        |
| Kosher   | Yes          | No        |

Information contained within this document is based exclusively on the product as sold. Full consideration should therefore be given to product make-up/finished product standard.

## 5. STORAGE CONDITIONS AND SHELF LIFE

| 5.1 Unopened       |  |  |
|--------------------|--|--|
| Product Code       | Pack Size                                    | Shelf Life (sealed)  |
| 10000082           | 12.5kg                                       | 180 days from date of manufacture. Clearly marked with "Best Before" date. |
| Storage Conditions | Unopened, store in a cool, dry place (<20°C) |  |

| 5.2 Opened         |   |
|--------------------|---|
| Shelf Life         | Until end of shelf life, provided it is stored in closed unit |
| Storage Conditions | Store in a cool, dry place (<20°C)                            |

| 5.3 Freeze Thaw Stability                           |
|---|
| Freeze-thaw stable in application only, not in pack |

| 5.4 Recommended Make Up Instructions/Use   |
|--|
| See product label and/or Technical Information Sheet. Available from <a href="http://www.macphie.com">www.macphie.com</a> or from the Customer Service Team ( <a href="mailto:Customer.Service@macphie.com">Customer.Service@macphie.com</a> ) |

## 6. FOOD SAFETY DATA

| Test     | Standard   |
|----------|------------|
| E.coli   | <100 cfu/g |
| S.Aureus | <100 cfu/g |



# SIMPLY CLEVER FOOD

Genoese Mix 12.5kg

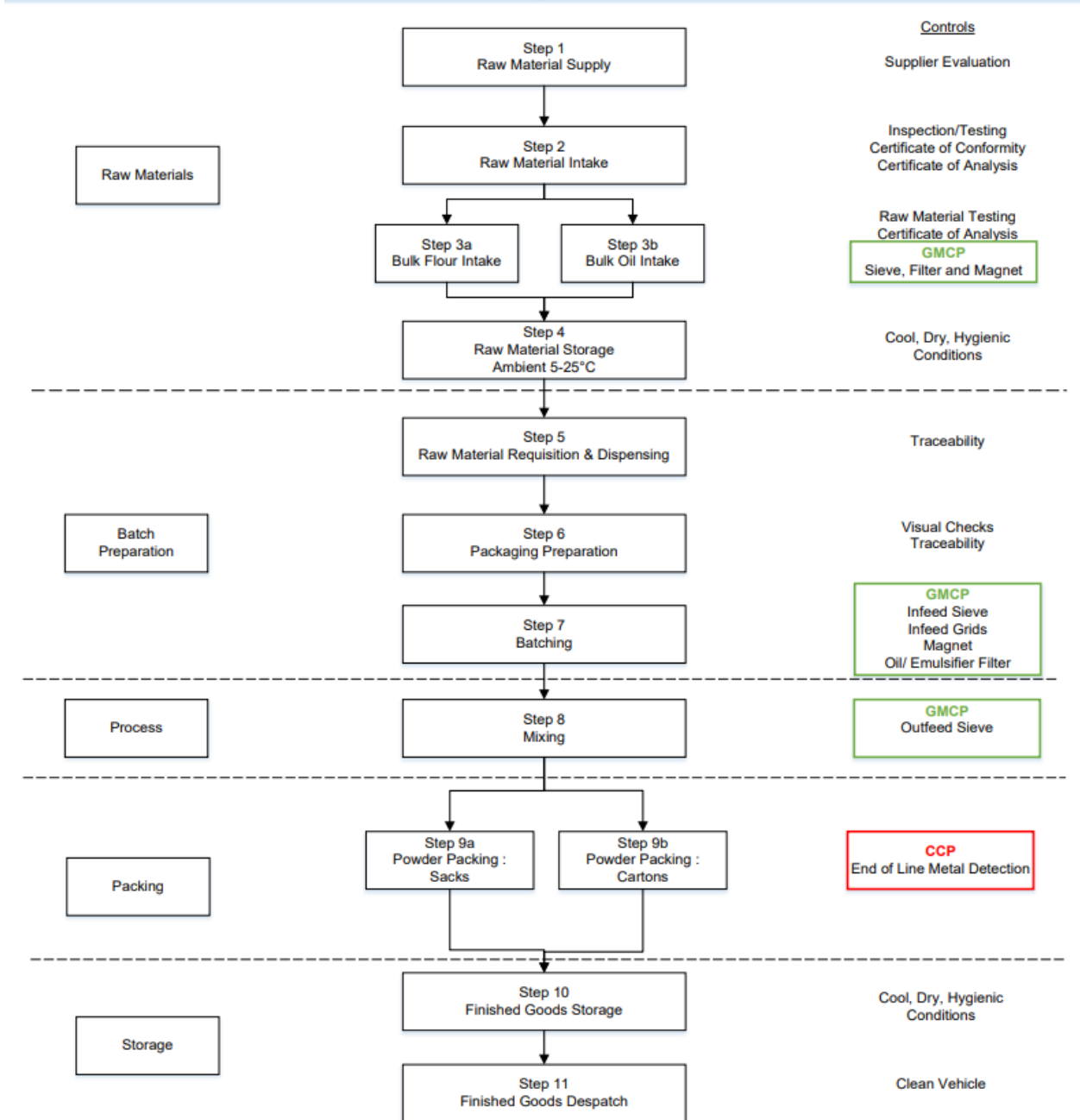
ISSUE DATE:

02/12/2025

## 7. HACCP FLOW CHART

### Powder Products (PID HACCP)

#### Process Steps 1-11





# SIMPLY CLEVER FOOD

Genoese Mix 12.5kg

ISSUE DATE:

02/12/2025

## 8. PACKAGING

| 8.1                | Packaging               |                                   |  |                |         |                  |     |
|--------------------|-------------------------|-----------------------------------|--|----------------|---------|------------------|-----|
|                    | Outer Packaging         |                                   |  | Dimensions (m) |         | Weights (kg)     |     |
|                    |                         | Small Red Easy Open Sack-HS<br>FC | Length   | 0.76           | Paper   | 0.114            |     |
|                    |                         |                                   | Width  | 0.427          | Plastic | 0.022            |     |
|                    | Colour                  | Red                               | Height   | n/a            | Metal   | 0                |     |
|                    | Recyclable?             | Yes                               |  |                | Net     | 0.136            |     |
|                    |                         |                                   |  |                |         |                  |     |
|                    | Label (Outer Packaging) |                                   |  | Dimensions (m) |         | Weights (kg)     |     |
|                    |                         | Blank White Label 140 x 170mm     | Length   | 0.17           | Paper   | 0.001            |     |
|                    |                         |                                   | Width  | 0.14           | Plastic | 0                |     |
|                    | Colour                  | White                             | Height   | n/a            | Metal   | 0                |     |
|                    | Recyclable?             | Yes                               |  |                | Net     | 0.001            |     |
|                    |                         |                                   |  |                |         |                  |     |
|                    | Transport Packaging     |                                   |  |                |         |                  |     |
|                    | Item                    |                                   | Material   | Colour         |         | Weights (kg)     |     |
|                    | Pallet Cover            |                                   | Plastic  | Transparent    |         | 0.064            |     |
| Pallet Stretchwrap |                         | Plastic                           | Transparent  |                | 0.450   |                  |     |
| Pallet Layerboard  |                         | Paper                             | Brown  |                | 0.379   |                  |     |
| 8.2                | Pallet Information      |                                   | Blue   |                |         |                  |     |
| 8.3                | Sealing                 |                                   | Heat Sealed  |                |         |                  |     |
| 8.4                | Dimensions of Unit (m)  | Length                            | 0.76   | Width          | 0.427   | Height           | n/a |
| 8.5                | Pallet Configuration    |                                   | Units per layer  |                | 7       | Total per pallet |     |
|                    |                         |                                   | Number of layers   |                | 7       | 50               |     |
|                    |                         |                                   | Additional   |                | 1       |                  |     |
|                    |                         |                                   | Total pallet weight (kg)   |                | 660.9   |                  |     |
| 8.6                | GTIN                    |                                   |  | Barcode        |         | GTIN Series      |     |
|                    |                         |                                   | Inner  | n/a            |         | n/a              |     |
|                    |                         |                                   | Outer  | 05017506025319 |         | GTIN 14          |     |
| 8.7                | Traceability            |                                   | Each unit is labelled with a Macphie label detailing product name, product code, product weight (minimum), best before date (DD/MMM/YY), and system-generated 6 digit lot/batch No. Sequential unit number is ink jetted directly onto the unit. |                |         |                  |     |