

Changed Nov 06, 2025 16:11

Reviewed Nov 06, 2025 16:11

Erudus ID e41e3aa5794148388a5e70fce8c20d3e

Version 1.0

Status Published

Et Voila Beef Goulash 4 x 1kg

Beef Goulash

PRODUCT DESCRIPTION

Beef Goulash

Brand	Et Voila Ltd
Manufacturer Product Code	EV112
Product Type	Food
Product Category	Other
Storage Type	Frozen
Erudus ID	e41e3aa5794148388a5e70fce8c20d3e
Specification Type	Generic

Inner Component GTIN	5060778192432
Manufacturer Component Code	EV112
Outer Case GTIN	15060778192439



INGREDIENTS

Ingredient Declaration
Water, Minced Beef (17%), Red Peppers, Tomato Paste, Rice, Red Wine Merlot (SULPHITES), Beef Stock ((Water, Beef Stock, Onion, Tomato, Carrot Extract, Herbs, Spice, Garlic), Salt, Glucose Syrup, Flavourings, Maltodextrin, Yeast Extracts, Rapeseed Oil, Colour (Caramel), Sugar),Vegetable Oil, Modified Maize Starch, Garlic Granules, Smoked Paprika, Cracked Black Pepper, Thyme.

ALLERGENS

<i>Product Contains:</i>			
Celery/Celeriac	No	Mustard	No
Cereals Containing Gluten	No	Nuts (Tree)	No
Barley	No	Almond nuts	No
Oats	No	Brazil nuts	No
Rye	No	Cashew nuts	No
Wheat (including Spelt and Khorasan)	No	Hazelnuts	No
Crustacea	No	Macadamia (Queensland) nuts	No
Eggs	No	Pecan nuts	No
Fish	No	Pistachio nuts	No
Lupin	No	Walnuts	No
Milk	No	Peanuts	No
Molluscs	No	Sesame Seeds	No
		Soybeans	No
		Sulphur Dioxide and Sulphites	Yes

Additional Allergen Information
Allergens handled on site: Milk, Mustard, Soybeans, Cereal containing Gluten(Barley) and Sulphites.

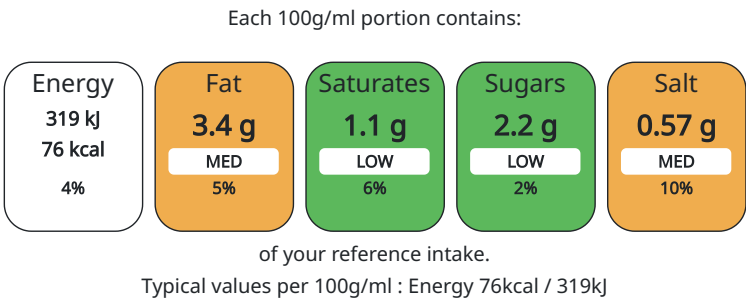
SUPPLEMENTARY
INGREDIENT
INFORMATION

Palm Oil	No
GM Protein/DNA	No

ADDITIVES

Product Contains:	Artificial Preservatives	No
	Artificial Sweeteners	No

NUTRITIONAL
INFORMATION AS
SOLD



Nutrient	per 100g	RI per 100g	per 100g serving	RI per 100g serving
Energy (kJ)	319 kJ	4%	319	4%
Energy (kcal)	76 kcal	4%	76	4%
Fat	3.4 g	5%	3.4 g	5%
of which Saturates	1.1 g	6%	1.1 g	6%
of which Mono-unsaturates	< 0.1 g		0.1 g	
of which Polyunsaturates	< 0.1 g		0.1 g	
Carbohydrate	6.5 g	3%	6.5 g	3%
of which Sugars	2.2 g	2%	2.2 g	2%
Fibre	< 0.5 g		0.5 g	
Protein	4.8 g	10%	4.8 g	10%
Salt	0.57 g	10%	0.57 g	10%
Serving Size	100 g			

HANDLING &
STORAGE
INFORMATION

Directions For Use	Ensure product is pipping hot before consuming.
Storage Instructions	Frozen Storage. Once defrost, keep chilled and use within 14 days.
Storage Instructions After Opening	Once opened, keep chilled, use within 3 days and by the date shown on label.
Shelf Life from Time of Production	365 Days
Shelf Life From Opening	3 Days
Shelf Life Once Defrosted	14 Days

ACCREDITATIONS/
CERTIFICATIONS/
ASSURANCE
SCHEMES
ORIGIN

SALSA (Safe & Local Supplier Approval)	
Product Country of Origin	United Kingdom
Origin of the Primary Ingredient	Not Applicable

PRODUCT
CHARACTERISTICS

Standards Testing			
Do you undertake trend analysis of microbiological results?	Yes	Is shelf life testing undertaken?	Yes
Microbiological Standards			

	Organism	Description	Frequency	Target	Maximum	Sample (g or ml)	
	Bacillus Cereus (cfu/g or ml)		Occasionally	<20	100	100	
	E. Coli (cfu/g or ml)		Occasionally	<10	100	100	
	Listeria SPP (cfu/g or ml)		Occasionally	<0	0	100	
	Salmonella (cfu/g or ml)		Occasionally	<0	0	100	
	Yeast (cfu/g or ml)		Occasionally	<100	500	100	
	Moulds (cfu/g or ml)		Occasionally	<100	500	100	
CONFIGURATION	Analytical Standards						
	Test	Description	Frequency	Target	Range	Sample (g or ml)	
	pH		Every Batch	<4.2	2.8 to 4.2	100	
	Case Configuration			Inner Pack Configuration			
	Variable Inner Components in Outer Case		Yes				
	Total Quantity of Inner Components in Outer Case		4 Units				
	Is the Outer Case Splittable?		Yes				
	Inner Component						
PRODUCT WEIGHTS	Inner Component Weight		1 kg				
	Inner Component Volume		4 ml				
	Net Drained Weight		1 kg				
	Outer Case						
	Outer Case Gross Weight		4.25 kg				
	Outer Case Net Weight		4 kg				
	Inner Component						
	Inner Component Depth		200 mm				
PRODUCT DIMENSIONS	Inner Component Width		250 mm				
	Inner Component Height		5 mm				
	Outer Case						
	Outer Case Depth		350 mm				
	Outer Case Width		320 mm				
	Outer Case Height		68 mm				
	Quantity of Cases Per Pallet Layer		6 Cases	Pallet Type		Euro Pallet	
	Quantity of Layers Per Pallet		25 Layers	Pallet Height		1.54 MTR	
PALLET INFORMATION	Quantity of Cases Per Pallet		150 Cases	Pallet Gross Weight		620 kg	
	Inner Component Packaging						
PACKAGING	Type	Materials	Weight	Recycled Material %	Recyclable	Returnable	Composite
	Bag	Plastic / PE (Polyethylene)	13 g				
	Outer Case Packaging						
	Type	Materials	Weight	Recycled Material %	Recyclable	Returnable	Composite
	Box	Paper/Cardboard / Cardboard	34 g		Yes	No	No
	Shrink Wrap	Plastic	10 g				

OTHER
INFORMATION
CONTACT
INFORMATION

Address
Et Voila Ltd
1st Floor Chancery Lane
Retford
Nottinghamshire
DN22 6DF
United Kingdom

P: (Phone) 07496118569

Complaints Contact
Agnieszka
Quality Technician
qa@etvoila-fs.co.uk

P: (Phone) 07496118569

Technical Contact
Roxana Ionescu
Quality Manager
roxanna@etvoila-fs.co.uk

P: (Phone) 07496118569

Commercial Contact
Roxana Ionescu
Factory manager
qc@etvoila-fs.co.uk

P: (Phone) 07496118569

The information on the [Erudus System](#) has been supplied by the manufacturers of the products and, whilst the owners of the Erudus System take steps to ensure the information is regularly updated, they give no warranty and no guarantee that the information is accurate. Product information and ingredients may change, please always read product labels carefully in addition to using the information provided by Erudus.

We do not accept liability for any inaccuracies or incorrect information contained on this site.
Please visit <http://www.erudus.com/terms-and-conditions> for full terms and conditions.