

Changed Nov 24, 2025 15:38

Reviewed Nov 24, 2025 15:38

Erudus ID 6311b1dbb08c4f128f5e84a2948f901e

Version 1.0

Status Published



# Et Voila Vegan Coconut Chickpea Curry Stew 4 x 1kg

Vegan Coconut Chickpea Curry Stew

## PRODUCT DESCRIPTION

Vegan Coconut Chickpea Curry Stew

Manufacturer Product Code	EV109
Product Type	Food
Product Category	Other
Storage Type	Frozen
Erudus ID	6311b1dbb08c4f128f5e84a2948f901e
Specification Type	Generic

Inner Component GTIN	5060778192401
Manufacturer Component Code	EV109
Outer Case GTIN	15060778192408



## INGREDIENTS

### Ingredient Declaration

Chickpea(25%), Tomato, Coconut Cream(22%), Potato, Water, Red Pepper, Onion, Modified Maize Starch, Lime Juice, Garlic Granules, Garam Masala (Coriander, Cassia, Ginger, Cloves), Curry Powder ( Coriander, Turmeric, Fenugreek, Cumin, Coriander Leaves, Ginger, Cassia, Chilli, Black Pepper, Cloves), Salt, Cumin, Cracked Pepper.

## ALLERGENS

### Product Contains:

Celery/Celeriac	No	Mustard	No
Cereals Containing Gluten	No	Nuts (Tree)	No
Barley	No	Almond nuts	No
Oats	No	Brazil nuts	No
Rye	No	Cashew nuts	No
Wheat (including Spelt and Khorasan)	No	Hazelnuts	No
Crustacea	No	Macadamia (Queensland) nuts	No
Eggs	No	Pecan nuts	No
Fish	No	Pistachio nuts	No
Lupin	No	Walnuts	No
Milk	No	Peanuts	No
Molluscs	No	Sesame Seeds	No
		Soybeans	No
		Sulphur Dioxide and Sulphites	No

### Additional Allergen Information

Allergens handled on site: Milk, Mustard, Soybeans, Cereal containing Gluten(Barley) and Sulphites.

SUPPLEMENTARY  
INGREDIENT  
INFORMATION

Palm Oil	No
GM Protein/DNA	No

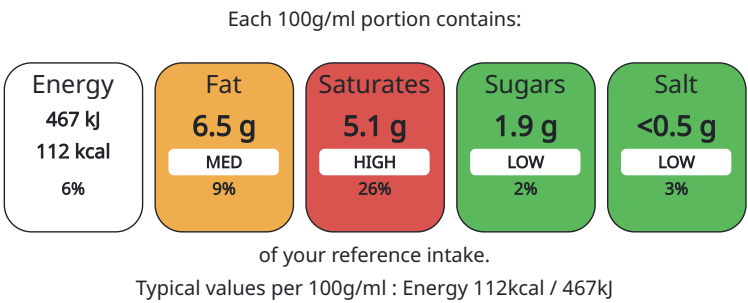
ADDITIVES

Product Contains:	
Artificial Preservatives	No
Artificial Sweeteners	No

DIET SUITABILITY

Vegan Diet	Suitable for	Vegetarian Diet	Suitable for
------------	--------------	-----------------	--------------

NUTRITIONAL  
INFORMATION AS  
SOLD



Nutrient	per 100g	RI per 100g	per 100g serving	RI per 100g serving
Energy (kJ)	467 kJ	6%	467	6%
Energy (kcal)	112 kcal	6%	112	6%
Fat	6.5 g	9%	6.5 g	9%
of which Saturates	5.1 g	26%	5.1 g	26%
of which Mono-unsaturates	< 0.1 g		0.1 g	
of which Polyunsaturates	< 0.1 g		0.1 g	
Carbohydrate	10.1 g	4%	10.1 g	4%
of which Sugars	1.9 g	2%	1.9 g	2%
Fibre	< 0.5 g		0.5 g	
Protein	3.3 g	7%	3.3 g	7%
Salt	0.19 g	3%	0.19 g	3%

Serving Size	100 g
--------------	-------

HANDLING &  
STORAGE  
INFORMATION

Directions For Use	Ensure product is pipping hot before consuming.
Storage Instructions	Frozen Storage. Once defrost, keep chilled and use within 14 days.
Storage Instructions After Opening	Once opened, keep chilled, use within 3 days and by the date shown on label.

Shelf Life from Time of Production	365 Days
Shelf Life From Opening	3 Days
Shelf Life Once Defrosted	14 Days

ACCREDITATIONS/  
CERTIFICATIONS/  
ASSURANCE  
SCHEMES  
ORIGIN

SALSA (Safe & Local Supplier Approval)	
Product Country of Origin	United Kingdom
Origin of the Primary Ingredient	Not Applicable

PRODUCT  
CHARACTERISTICS

Standards Testing
-------------------

	<div>Do you undertake trend analysis of microbiological results?</div>	<div>Yes</div>	<div>Is shelf life testing undertaken?</div>		<div>Yes</div>		
	Microbiological Standards						
	Organism	Description	Frequency	Target	Maximum	Sample (g or ml)	
	Bacillus Cereus (cfu/g or ml)		Occasionally	<20	100	100	
	E. Coli (cfu/g or ml)		Occasionally	<10	100	100	
	Listeria SPP (cfu/g or ml)		Occasionally	<0	0	100	
	Salmonella (cfu/g or ml)		Occasionally	<0	0	100	
	Yeast (cfu/g or ml)		Occasionally	<100	500	100	
	Moulds (cfu/g or ml)		Occasionally	<100	500	100	
	Analytical Standards						
	Test	Description	Frequency	Target	Range	Sample (g or ml)	
	pH		Every Batch	<4.2	2.8 to 4.2	100	
CONFIGURATION	Case Configuration			Inner Pack Configuration			
	Variable Inner Components in Outer Case		Yes				
	Total Quantity of Inner Components in Outer Case		4 Units				
	Is the Outer Case Splittable?		Yes				
PRODUCT WEIGHTS	Inner Component						
	Inner Component Weight		1 kg				
	Inner Component Volume		4 ml				
	Net Drained Weight		1 kg				
	Outer Case						
	Outer Case Gross Weight		4.25 kg				
	Outer Case Net Weight		4 kg				
PRODUCT DIMENSIONS	Inner Component						
	Inner Component Depth		200 mm				
	Inner Component Width		250 mm				
	Inner Component Height		5 mm				
	Outer Case						
	Outer Case Depth		350 mm				
	Outer Case Width		320 mm				
	Outer Case Height		68 mm				
PALLET INFORMATION	Quantity of Cases Per Pallet Layer		6 Cases	Pallet Type		Euro Pallet	
	Quantity of Layers Per Pallet		25 Layers	Pallet Height		1.54 MTR	
	Quantity of Cases Per Pallet		150 Cases	Pallet Gross Weight		620 kg	
PACKAGING	Inner Component Packaging						
	Type	Materials	Weight	Recycled Material %	Recyclable	Returnable	Composite
	Bag	Plastic / PE (Polyethylene)	13 g				

Outer Case Packaging

Type	Materials	Weight	Recycled Material %	Recyclable	Returnable	Composite
Box	Paper/Cardboard / Cardboard	34 g		Yes	No	No
Shrink Wrap	Plastic	10 g				

OTHER  
INFORMATION  
CONTACT  
INFORMATION

Address

Et Voila Ltd  
1st Floor Chancery Lane  
DN22 6DF  
Retford  
Nottinghamshire  
United Kingdom  
  
roxanna@etvoila-fs.co.uk  
07496118569

Technical

Sylwia Purgacz  
qam@etvoila-fs.co.uk  
07415 873789  
Quality Manager

Commercial

Roxana Ionescu  
roxanna@etvoila-fs.co.uk  
07496118569  
Site manager

Complaints

Agnieszka  
qa@etvoila-fs.co.uk  
07496118569  
Quality Technician

The information on the [Erudus System](#) has been supplied by the manufacturers of the products and, whilst the owners of the Erudus System take steps to ensure the information is regularly updated, they give no warranty and no guarantee that the information is accurate. Product information and ingredients may change, please always read product labels carefully in addition to using the information provided by Erudus.

We do not accept liability for any inaccuracies or incorrect information contained on this site.  
Please visit <http://www.erudus.com/terms-and-conditions> for full terms and conditions.