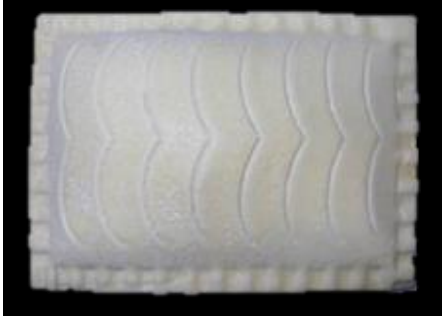



# EXTERNAL SPECIFICATION – CHICKEN CURRY SLICE

DOC NO: SH-QMS-SP478	VER NO: 1	PAGE: Page 1 of 4	ISSUE DATE: 11/12/2014	AMEND DATE: N/A	WRITTEN BY L. Batt	APPROVED:
-------------------------	--------------	----------------------	---------------------------	--------------------	-----------------------	-----------

<b>Product Name:</b>	Chicken Curry Slice	<b>Product Code:</b>	SL4098M
<b>Legal Name:</b>	Frozen Unbaked puff pastry case with a Chicken Curry filling and topped with an egg glaze.	<b>Product Weight:</b>	30 x 183g
<b>Manufacturing Site:</b>	David Wood Baking Ltd The Mill House Dorset Road Sheerness Kent ME12 1LP	<b>EC Code:</b>	United Kingdom SV004
		<b>Country of Manufacture:</b>	UK
<b>Storage Conditions:</b>	Frozen – Store at -18°C or below	<b>Shelf Life:</b>	+18 Months from date of production
<b>Product Coding:</b>	Best Before: DD/MM/YYYY Lot Code: L14234 23:59 (Julian code where 14 = year of production, 234 = day of the year and time of production using 24 hour clock) In case of complaint please quote Best Before and Lot Code.		

THE INGREDIENTS AND THEIR CONSTITUENT PARTS MEET ALL RELEVANT UK AND EC REGULATIONS (E.G. FOOD SAFETY ACT 1990, PESTICIDE RESIDUE LEVELS, PLASTIC MATERIALS IN CONTACT WITH FOOD ETC.), AND MUST NOT BE IRRADIATED OR CONTAIN GENETICALLY MODIFIED MATERIALS.

<b>Raw Photograph:</b>	<b>Baked Photograph:</b>
	

Ingredients:	Weight (g):	Tolerance:
Puff Pastry	111g	+ / - 3
Filling	69g	+ / - 3
Egg Glaze	3g	+ / - 1
Unbaked Dimensions:	mm:	Tolerance:
Length:	140	+ / - 3
Width:	100	+ / - 3

**Ingredient Declaration:**

Pastry (58%): **WHEAT** Flour (**WHEAT** Flour, Calcium Carbonate, Iron, Niacin, Thiamin), Margarine (Palm Oil, Water, Salt, Emulsifier: Mono and Di Glycerides of Fatty Acid), Water, Salt.  
 Filling (41%): Chicken (30%), Water, Onion, Curry Paste (Rapeseed Oil, Salt, Coriander Leaf, Paprika, Sugar, Tamarind Pulp, Garlic Puree, Ginger Puree, Turmeric, Acid: Citric Acid, Fenugreek Powder, **MUSTARD** Powder, Cumin Powder, Acid: Lactic Acid, Coriander Powder, Asafoetida), Rapeseed Oil, Tomatoes (Tomato, Tomato Juice, Acid: Citric Acid), Modified Waxy Maize Starch, Tomato Puree, Garlic Puree, Cream Powder (**MILK**), Sugar, Stabiliser: Hydroxypropyl Methyl Cellulose, **BARLEY** Malt Extract, Cumin, Ginger, Lemon Juice Concentrate, Cayenne Pepper  
 Glaze: **EGG**, Water

Finished Baked Product Contains: 14% Chicken

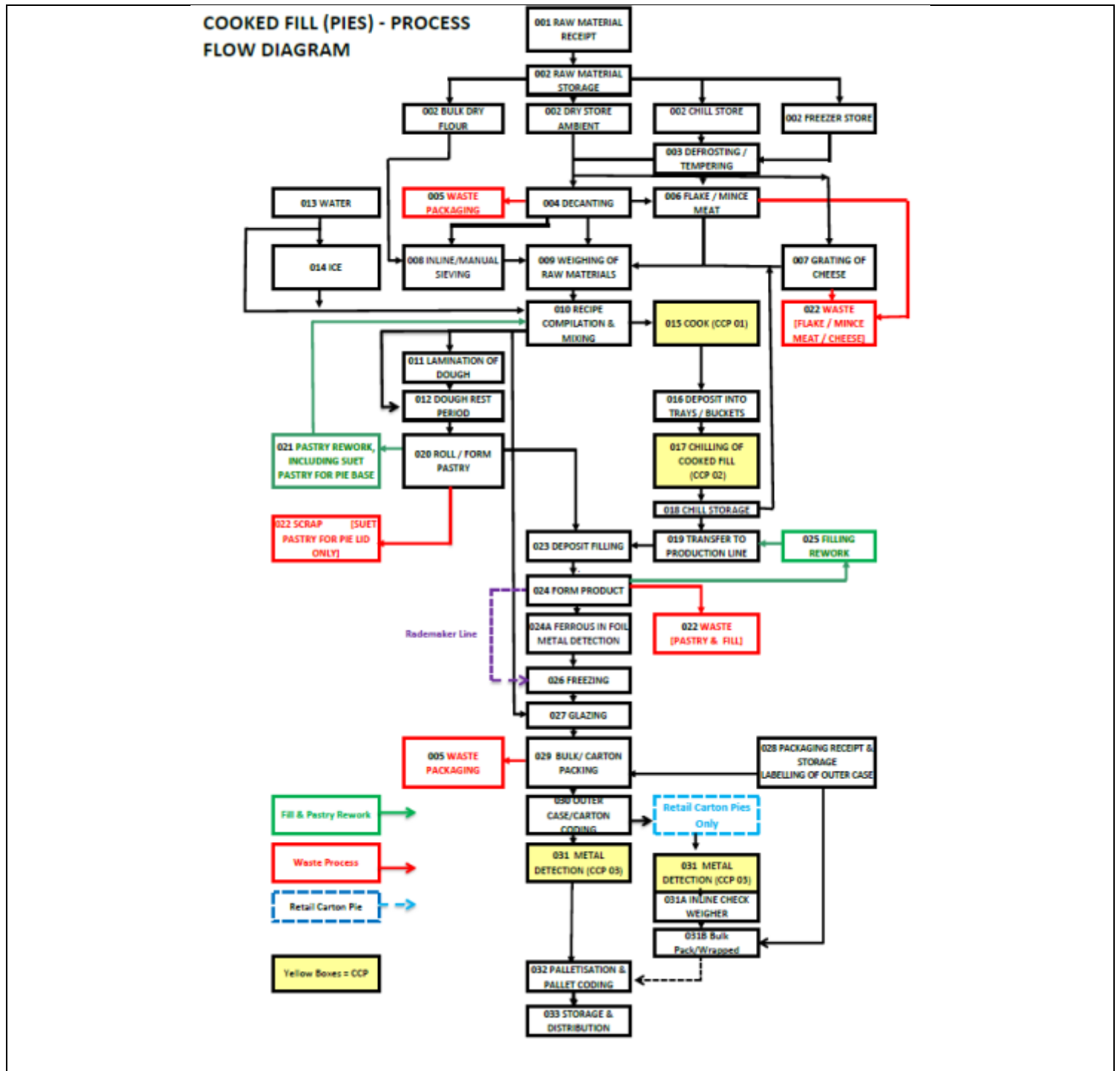
**Allergen Advice:** For allergens including cereals containing gluten see ingredients in **BOLD**  
 May contain traces of soya.

Produced using Chicken from Brazil

# EXTERNAL SPECIFICATION – CHICKEN CURRY SLICE

DOC NO: SH-QMS-SP478	VER NO: 1	PAGE: Page 2 of 4	ISSUE DATE: 11/12/2014	AMEND DATE: N/A	WRITTEN BY L. Batt	APPROVED:
-------------------------	--------------	----------------------	---------------------------	--------------------	-----------------------	-----------

Nutritional Information from Calculation		
	Per 100g Raw	Per 100g Baked
<b>Energy (Kcal)</b>	284	315
<b>Energy (KJ)</b>	1182	1313
<b>Protein:</b>	6.7	7.4
<b>Available Carbohydrate:</b>	22.5	25.0
<b>Of Which Sugars:</b>	1.5	1.6
<b>Fat:</b>	18.3	20.4
<b>Of Which Saturates:</b>	9.7	10.7
<b>Dietary Fibre:</b>	2.1	2.3
<b>Sodium:</b>	0.3	0.4
<b>Salt Equivalent:</b>	0.8	0.9



# EXTERNAL SPECIFICATION – CHICKEN CURRY SLICE

DOC NO: SH-QMS-SP478	VER NO: 1	PAGE: Page 3 of 4	ISSUE DATE: 11/12/2014	AMEND DATE: N/A	WRITTEN BY L. Batt	APPROVED:
-------------------------	--------------	----------------------	---------------------------	--------------------	-----------------------	-----------

## Microbiological Standards (Targets & Tolerances):

Test	Frequency	Target	Limit
TVC	New products monthly / each run, established products quarterly	<100,000/g	1,000,000/g
E.Coli	New products monthly / each run, established products quarterly	<10/g	100/g
S. Aureus	New products monthly / each run, established products quarterly	<10/g	100/g
Salmonella	New products monthly / each run, established products quarterly	Absent in 25g	Absent in 25g

## Packaging Weights:

Primary / Secondary / Tertiary	Material	Weight:	Note:
Primary	Plastic	25g	Primary = Food Contact Secondary = Non-Food Contact Case Materials Tertiary = Non-Food Contact Pallet Materials
Secondary	Cardboard	197g	
Secondary	Paper	2g	
Secondary	Plastic	5g	
Tertiary	Plastic	500g	
Tertiary	Wood	25Kg	
Tertiary	Paper	5g	

## Finished Weights:

<b>Net Case Weight:</b>	5.49Kg	<b>Gross Case Weight:</b>	5.72Kg
<b>Total Pallet Weight:</b>	695Kg	<b>Total Pallet Height:</b>	1533mm
<b>Pallet Configuration:</b>	Total of 117 Cases. 13 per layer, 9 layers high		

## Food Intolerance Data and Free From Information:

(Please tick where appropriate, If answer is Yes or C/C please specify ingredient in Comments box)

Section 1:	Is the product free from:	Yes	No	Possible C/C	Comments
1	Nuts (including any possible sources of cross contamination)?	✓			
2	Sesame Seeds and Derivatives?	✓			
3	Milk and Milk Derivatives?		✓		Cream Powder
4	Egg and Egg Derivatives?		✓		Glaze
5	Wheat and Wheat Derivatives?		✓		Wheat Flour
6	Barley and Barley Derivatives?		✓		Malt Extract
7	Oats and Oat Derivatives?	✓			
8	Soya and Soya Derivatives?			✓	Used on site
9	Maize and Maize Derivatives?		✓		Starch
10	Gluten?		✓		Wheat Flour & Malt Extract
11	Fruit and Fruit Derivatives?	✓			
12	Yeast and Yeast Derivatives?	✓			
13	Vegetables and Vegetable Derivatives?		✓		Margarine (Palm Oil), Onion, Tomato
14	Fish excluding Shellfish?	✓			
14a	Crustaceans, Molluscs and their Derivatives?	✓			
15	Mustard / Mustard Seeds?		✓		Mustard Powder
16	Celery / Celeriac?	✓			
17	Kiwi Fruit?	✓			
18	Caffeine?	✓			
19	Lupins?	✓			
20	Sulphites?	✓			
Section 2:	Is the product free from:	Yes	No	Possible C/C	Comments
21	Additives?		✓		Margarine
22	Azo and Coal Tar Dyes?	✓			
23	Benzoates?	✓			
24	BHA / BHT?	✓			

# EXTERNAL SPECIFICATION – CHICKEN CURRY SLICE

DOC NO: SH-QMS-SP478	VER NO: 1	PAGE: Page 4 of 4	ISSUE DATE: 11/12/2014	AMEND DATE: N/A	WRITTEN BY L. Batt	APPROVED:
25	Aspartame?		✓			
26	Added MSG?		✓			
27	Histamine?		✓			
28	Preservatives?		✓			
29	Artificial Preservatives?		✓			
30	Flavourings?		✓			
31	Artificial Flavourings?		✓			
32	Natural Flavourings?		✓			
33	Potassium Based Salt Substitutes?		✓			
<b>Section 3: Is the product suitable for:</b>			<b>Yes</b>	<b>No</b>	<b>Possible C/C</b>	<b>Comments</b>
34	Ovo-lacto Vegetarians?			✓		
35	Vegans?			✓		
36	Nut/Seed Allergy Sufferers?		✓			
37	Coeliacs?			✓		
<b>Section 4: Is the product free from:</b>			<b>Yes</b>	<b>No</b>	<b>Possible C/C</b>	<b>Comments</b>
38	Beef?		✓			
39	Pork?		✓			
40	Lamb?		✓			
41	Poultry?			✓		Chicken,
<b>Section 5: Is the product packaged in a protective atmosphere? Please Highlight</b>					<b>Yes</b>	<b>No</b>

<b>Genetic Modification:</b> (Please tick or comment where appropriate)				
		Yes	No	Don't Know
1a	Does the product or any of its ingredients contain any genetically modified material (whether active or not)?		✓	
1b	Identify those ingredients which contain such material	N/A		
2a	Is the product or any of its ingredients not substantially equivalent as a consequence of the use of genetic modification?		✓	
2b	Identify any such ingredients	N/A		
3a	Is the product or any of its ingredients or additives produced from, but not containing any genetically modified material?		✓	
3b	Identify those ingredients which are produced from such material	N/A		
4a	Have genetically modified organisms been used as processing aids or in connection with the production of the food or any of its ingredients?		✓	
4b	Identify any such processing aids or additives	N/A		
5a	Have genetically modified organisms been used to produce processing aids or additives but are not present in the processing aid as used in connection with the production of the food or any ingredient?		✓	
5b	Identify any such processing aids or additives	N/A		

<b>Supplier Name:</b>	David Wood Baking Ltd (Sheerness)	<b>Version Number:</b>	3
<b>Completed By: (Print Name)</b>	Lizzie Bassett	<b>Signature:</b>	<i>L. Bassett</i>
<b>Position:</b>	Technical Assistant	<b>Date:</b>	01.02.21