

Changed Oct 31, 2025 16:16

Reviewed Oct 31, 2025 16:16

Erudus ID f6cd42e021854a40a97191927180e18e

Version 6.0

Status Published

5676 40474

Brimble's Strawberry Ice Cream 6 x 4 Litre

Strawberry Ice Cream

PRODUCT DESCRIPTION

Strawberry flavoured Ice Cream

Brand	Brimble's
Manufacturer Product Code	BSTR4
Product Type	Food
Product Category	Ice Cream
Storage Type	Frozen
Erudus ID	f6cd42e021854a40a97191927180e18e
Specification Type	Dairy



Inner Component GTIN	5060012790783
Outer Case GTIN	5060012790776



INGREDIENTS

Ingredient Declaration

Water, Sugar, **MILK** solids (7%), Vegetable oil (Sustainable palm), Whey powder (**MILK**), Emulsifier: Mono- and Diglycerides of Fatty Acids, Stabilisers: Guar Gum, Carrageenan, Locust Bean Gum, Humectant: Vegetable glycerine, Natural Flavouring, Colour: Beetroot Red

Ingredient Statements

For allergens, please see ingredients in BOLD.

ALLERGENS

Product Contains:			
Celery/Celeriac	No	Mustard	No
Cereals Containing Gluten	No	Nuts (Tree)	No
Barley	No	Almond nuts	No
Oats	No	Brazil nuts	No
Rye	No	Cashew nuts	No
Wheat (including Spelt and Khorasan)	No	Hazelnuts	No
Crustacea	No	Macadamia (Queensland) nuts	No
Eggs	No	Pecan nuts	No
Fish	No	Pistachio nuts	No
Lupin	No	Walnuts	No
Milk	Yes	Peanuts	No
Molluscs	No	Sesame Seeds	No
		Soybeans	No
		Sulphur Dioxide and Sulphites	No

Allergen Statement On Pack

For allergens, please see ingredients in BOLD.

SUPPLEMENTARY
INGREDIENT
INFORMATION

Palm Oil	Yes
Hydrogenated Vegetable Oil/Fat	No
GM Protein/DNA	No

ADDITIVES

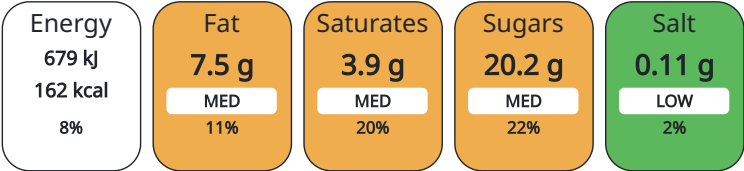
Product Contains:			
Artificial Antioxidants	No	Artificial Flavourings	No
Artificial Colours	No	Artificial Preservatives	No
Artificial Flavour Enhancers	No	Artificial Sweeteners	No

DIET SUITABILITY

Vegetarian Diet	Suitable for	Halal Diet	Certified
-----------------	--------------	------------	-----------

NUTRITIONAL
INFORMATION AS
SOLD

Each 100g/ml portion contains:



of your reference intake.

Typical values per 100g/ml : Energy 162kcal / 679kJ

Nutrient	per 100g	RI per 100g
Energy (kJ)	679 kJ	8%
Energy (kcal)	162 kcal	8%
Fat	7.5 g	11%
of which Saturates	3.9 g	20%
Carbohydrate	20.9 g	8%
of which Sugars	20.2 g	22%
Protein	2.8 g	6%
Salt	0.11 g	2%

Source of Nutritional Information Calculation based on known values of ingredients

HFSS (HIGH IN FAT, SALT AND SUGAR)	HFSS Status		Yes			
	HFSS Score		8			
HANDLING & STORAGE INFORMATION	Directions For Use					
	Keep frozen					
	Storage Instructions					
	Store below -18 C. Do not refreeze once thawed					
ACCREDITATIONS/ CERTIFICATIONS/ ASSURANCE SCHEMES ORIGIN	Shelf Life from Time of Production		730 Days			
	B Corp Certification			BRCGS Certified		
	BRCGS Start!			Sedex		
	Product Country of Origin		United Kingdom			
	Origin of the Primary Ingredient		United Kingdom			
PRODUCT CHARACTERISTICS	Standards Testing					
	Do you undertake trend analysis of microbiological results?		Yes		Is shelf life testing undertaken?	
					Yes	
					Commercially Sterile	
					No	
	Microbiological Standards					
	Organism		Description	Frequency	Target	Maximum
						Sample (g or ml)
	Enterobacteriaceae (cfu/g or ml)		Annually	<100	10000	1
	E. Coli (cfu/g or ml)		Annually	<20	100	1
	Staphylococcus Aureus (cfu/g or ml)		Annually	<20	100	1
	Salmonella (cfu/g or ml)		Annually	=0	0	25
	Listeria SPP (cfu/g or ml)		Annually	=0	0	25
	Aerobic Colony Count (ACC) (cfu/g or ml)		Annually	<10000	50000	1
Bacillus Cereus (cfu/g or ml)		Annually	<1000	100000	1	
SUPPLEMENTARY INFORMATION						
Milk Type		Cow		Pasteurised		
ORGANOLEPTICS						
Appearance						
Pale pink in colour.						
Aroma						
Typical of strawberries.						
Taste						
Creamy with sweetness from strawberries.						
Texture						
Smooth and creamy mouthfeel.						
HAZARD CONTROLS						
Metal Detection		Yes		Filters		
				Yes		
CONFIGURATION	Case Configuration			Inner Pack Configuration		
	Variable Inner Components in Outer Case		No			
	Total Quantity of Inner Components in Outer Case		6 Units			
	Is the Outer Case Splittable?		No			

PRODUCT WEIGHTS

Inner Component	
Variable Weight Consumer Item	Yes
Inner Component Volume	4 litre
e mark	No
Outer Case	
Outer Case Gross Weight	10.48 kg
Outer Case Net Weight	9.46 kg

PRODUCT DIMENSIONS

Inner Component	
Inner Component Depth	227 mm
Inner Component Width	165 mm
Inner Component Height	158 mm
Outer Case	
Outer Case Depth	505 mm
Outer Case Width	230 mm
Outer Case Height	291 mm

PALLET INFORMATION

Quantity of Cases Per Pallet Layer	10 Cases	Pallet Type	UK Standard Pallet
Quantity of Layers Per Pallet	5 Layers	Pallet Height	1.7 MTR
Quantity of Cases Per Pallet	50 Cases		

PACKAGING

Inner Component Packaging						
Type	Materials	Weight	Recycled Material %	Recyclable	Returnable	Composite
Tub	Plastic / PP (Polypropylene)	93 g	0 %	Yes	No	No
Lid	Plastic / PP (Polypropylene)	29 g	0 %	Yes	No	No
Label	Paper/Cardboard / Paper	2 g		Yes	No	No
Outer Case Packaging						
Type	Materials	Weight	Recycled Material %	Recyclable	Returnable	Composite
Case	Paper/Cardboard / Corrugated	281 g		Yes	No	No
Transport Packaging						
Type	Materials	Weight	Recycled Material %	Recyclable	Returnable	Composite
Pallet Wrap	Plastic / PE (Polyethylene)	250 g	0 %	No	No	No
Pallet	Wood	25000 g		Yes	No	No

OTHER INFORMATION
CONTACT INFORMATION

		Identification/Health Marks	GB TB 013
Address Marshfield Farm Ice Cream Limited Marshfield SN14 8LE Nr Bath Wiltshire United Kingdom katie@marshfield-icecream.co.uk 01225 891221		Technical Technical Team technical@marshfield-icecream.co.uk 01225 891221 Technical Team Complaints Technical Team technical@marshfield-icecream.co.uk 01225 891221 Technical Team	

The information on the [Erudus System](#) has been supplied by the manufacturers of the products and, whilst the owners of the Erudus System take steps to ensure the information is regularly updated, they give no warranty and no guarantee that the information is accurate. Product information and ingredients may change, please always read product labels carefully in addition to using the information provided by Erudus.

We do not accept liability for any inaccuracies or incorrect information contained on this site.
Please visit <http://www.erudus.com/terms-and-conditions> for full terms and conditions.