

Changed Nov 24, 2025 15:38

Reviewed Nov 24, 2025 15:38

Erudus ID cbffefbe46804254aedacde78c50b769

Version 1.0

Status Published



# Et Voila Thai Vegetable Coconut Soup 4 x 1kg

Thai Vegetable Coconut Soup

## PRODUCT DESCRIPTION

Thai Vegetable Coconut Soup

Manufacturer Product Code	EV110
Product Type	Food
Product Category	Other
Storage Type	Frozen
Erudus ID	cbffefbe46804254aedacde78c50b769
Specification Type	Generic

Inner Component GTIN	5060778192418
Manufacturer Component Code	EV110
Outer Case GTIN	15060778192415



## INGREDIENTS

### Ingredient Declaration

Water, Coconut Cream (32%), EDAMANE BEANS (SOYA), Sweet Potato, Red Pepper, Green Beans, Baby Corn, Bamboo Shoots, SOYA SAUCE (SOYA,WHEAT), Spinach Leaf, Vegetable Stock (Water, Onion Powder, Carrot Juice Powder, Tomato Powder, Herb (Lovage), Dried Glucose Syrup, Yeast Extract, Salt, Sugar, Chicory Extract, Rapeseed Oil, Natural Flavouring), Modified Maize Starch, Tamarind Concentrate (Water, Tamarind, Salt, Preservative (Potassium Sorbate, Sodium Benzoate), Garlic Granules, Lime Juice, Cumin Powder, Ginger Powder, Salt, Coriander, Basil.

## ALLERGENS

Product Contains:

Celery/Celeriac	No
Cereals Containing Gluten	Yes
Barley	No
Oats	No
Rye	No
Wheat (including Spelt and Khorasan)	Yes
Crustacea	No
Eggs	No
Fish	No
Lupin	No
Milk	No
Molluscs	No

Mustard	No
Nuts (Tree)	No
Almond nuts	No
Brazil nuts	No
Cashew nuts	No
Hazelnuts	No
Macadamia (Queensland) nuts	No
Pecan nuts	No
Pistachio nuts	No
Walnuts	No
Peanuts	No
Sesame Seeds	No
Soybeans	Yes
Sulphur Dioxide and Sulphites	No

### Additional Allergen Information

Allergens handled on site: Milk, Mustard, Soybeans, Cereal containing Gluten(Barley) and Sulphites.

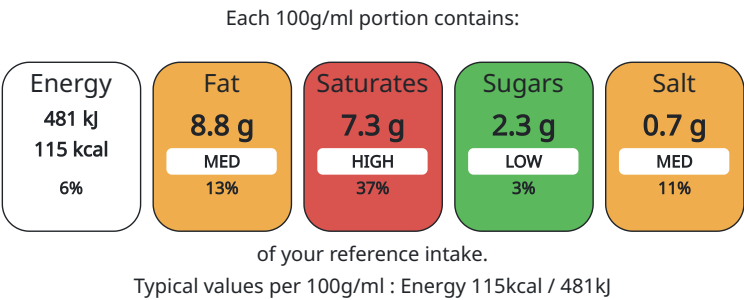
SUPPLEMENTARY  
INGREDIENT  
INFORMATION

Palm Oil	No
GM Protein/DNA	No

ADDITIVES

Product Contains:	Artificial Preservatives	No
	Artificial Sweeteners	No

NUTRITIONAL  
INFORMATION AS  
SOLD



Nutrient	per 100g	RI per 100g	per 100g serving	RI per 100g serving
Energy (kJ)	481 kJ	6%	481	6%
Energy (kcal)	115 kcal	6%	115	6%
Fat	8.8 g	13%	8.8 g	13%
of which Saturates	7.3 g	37%	7.3 g	37%
of which Mono-unsaturates	< 0.1 g		0.1 g	
of which Polyunsaturates	< 0.1 g		0.1 g	
Carbohydrate	6.9 g	3%	6.9 g	3%
of which Sugars	2.3 g	3%	2.3 g	3%
Fibre	< 0.5 g		0.5 g	
Protein	2 g	4%	2 g	4%
Salt	0.65 g	11%	0.65 g	11%
Serving Size	100 g			

HANDLING &  
STORAGE  
INFORMATION

Directions For Use	Ensure product is pipping hot before consuming.
Storage Instructions	Frozen Storage. Once defrost, keep chilled and use within 14 days.
Storage Instructions After Opening	Once opened, keep chilled, use within 3 days and by the date shown on label.

Shelf Life from Time of Production	365 Days
Shelf Life From Opening	3 Days
Shelf Life Once Defrosted	14 Days

ACCREDITATIONS/  
CERTIFICATIONS/  
ASSURANCE  
SCHEMES  
ORIGIN

SALSA (Safe & Local Supplier Approval)	
Product Country of Origin	United Kingdom
Origin of the Primary Ingredient	Not Applicable

PRODUCT  
CHARACTERISTICS

Standards Testing			
Do you undertake trend analysis of microbiological results?	Yes	Is shelf life testing undertaken?	Yes
Microbiological Standards			

	Organism		Description	Frequency	Target	Maximum	Sample (g or ml)
	Bacillus Cereus (cfu/g or ml)			Occasionally	<20	100	100
	E. Coli (cfu/g or ml)			Occasionally	<10	100	100
	Listeria SPP (cfu/g or ml)			Occasionally	<0	0	100
	Salmonella (cfu/g or ml)			Occasionally	<0	0	100
	Yeast (cfu/g or ml)			Occasionally	<100	500	100
	Moulds (cfu/g or ml)			Occasionally	<100	500	100
Analytical Standards							
	Test		Description	Frequency	Target	Range	Sample (g or ml)
	pH			Every Batch	<4.2	2.8 to 4.2	100
CONFIGURATION	Case Configuration			Inner Pack Configuration			
	Variable Inner Components in Outer Case		Yes				
	Total Quantity of Inner Components in Outer Case		4 Units				
	Is the Outer Case Splittable?		Yes				
PRODUCT WEIGHTS	Inner Component						
	Inner Component Weight		1 kg				
	Inner Component Volume		4 ml				
	Net Drained Weight		1 kg				
PRODUCT DIMENSIONS	Outer Case						
	Outer Case Gross Weight		4.25 kg				
	Outer Case Net Weight		4 kg				
	Inner Component						
	Inner Component Depth		200 mm				
	Inner Component Width		250 mm				
	Inner Component Height		5 mm				
	Outer Case						
	Outer Case Depth		350 mm				
	Outer Case Width		320 mm				
	Outer Case Height		68 mm				
	PALLET INFORMATION	Quantity of Cases Per Pallet Layer		6 Cases	Pallet Type		Euro Pallet
Quantity of Layers Per Pallet		25 Layers	Pallet Height		1.54 MTR		
Quantity of Cases Per Pallet		150 Cases	Pallet Gross Weight		620 kg		
PACKAGING		Inner Component Packaging					
	Type	Materials	Weight	Recycled Material %	Recyclable	Returnable	Composite
	Bag	Plastic / PE (Polyethylene)	13 g				
	Outer Case Packaging						
	Type	Materials	Weight	Recycled Material %	Recyclable	Returnable	Composite
	Box	Paper/Cardboard / Cardboard	34 g		Yes	No	No
	Shrink Wrap	Plastic	10 g				

**Address**

Et Voila Ltd  
1st Floor Chancery Lane  
DN22 6DF  
Retford  
Nottinghamshire  
United Kingdom

roxanna@etvoila-fs.co.uk  
07496118569

**Technical**

Sylwia Purgacz  
qam@etvoila-fs.co.uk  
07415 873789  
Quality Manager

**Commercial**

Roxana Ionescu  
roxanna@etvoila-fs.co.uk  
07496118569  
Site manager

**Complaints**

Agnieszka  
qa@etvoila-fs.co.uk  
07496118569  
Quality Technician

The information on the [Erudus System](#) has been supplied by the manufacturers of the products and, whilst the owners of the Erudus System take steps to ensure the information is regularly updated, they give no warranty and no guarantee that the information is accurate. Product information and ingredients may change, please always read product labels carefully in addition to using the information provided by Erudus.

We do not accept liability for any inaccuracies or incorrect information contained on this site.  
Please visit <http://www.erudus.com/terms-and-conditions> for full terms and conditions.