



Midland Chilled Foods Ltd Sandwich Filling Specifications

Specification Document Control

PRODUCT NAME:	Turkey, Cranberry, Sage & Onion Sandwich Filling	
PRODUCT CODE:	1 KG – SO581X	2 KG – SO681X
	10 KG – SO781X	

Issue Date	Revision No.	Supersedes Specification dated	Issued By	Amendments Made
10.11.2010	01		Stacey Dean	
14.12.2010	02	10.11.2010	Stacey Dean	Addition of packaging and legal information to specification
07.09.2011	03	14.12.2010	Gemma Wood	Addition of flow diagram and update of micro.
11.11.2011	04	07.09.2011	Gemma Wood	Addition of 2Kg, 10Kg packaging.

SUPPLIER INFORMATION

SUPPLIER: Midland Chilled Foods Ltd.	POINT OF MANUFACTURE: If different
ADDRESS: Stringes Lane Willenhall West Midlands WV13 1LX	ADDRESS:
TEL No: 01902 366004	TEL No:
FAX No: 01902 634598	FAX No:
Technical Department	Eddie Greaves
Specifications Technologist	Gemma Wood

VERSION NO.	PAGE NO.	ISSUE DATE	ISSUED BY	DEPARTMENT
05	Page 1 of 13	26/10/2011	Gemma Wood	Technical



Midland Chilled Foods Ltd Sandwich Filling Specifications

INGREDIENT INFORMATION

PRODUCT TITLE:	Turkey, Cranberry, Sage & Onion Sandwich Filling														
DESCRIPTION OF PRODUCT:	Sliced turkey in a cranberry, onion and sage chutney.														
PRODUCT SHELF LIFE:	P+14 Days														
INGREDIENT DECLARATION:	Turkey Breast (60%) [Turkey, Salt, Dextrose, Thickener: E1422 (from Maize), Emulsifiers: E407, E451, Paprika, Spices], Cranberry, Sage & Onion Chutney (40%) [Water, Cranberries, Glucose Syrup Solids, Sugar, Onion, Spirit Vinegar, Thickener: E1422 (from Maize), Salt, Rubbed Sage, Garlic].														
NUTRITIONAL INFORMATION: Source: Nutricalc Values quoted should be used for guidance purposes only. NOTE: The information stated is given in good faith and is based upon the product formulation and data provided by raw material suppliers. Whilst we make every effort to obtain assurances from our suppliers regarding the nutritional data supplied, manufacturers and/or suppliers do not always test their materials to obtain nutritional data and therefore will not always provide absolute value.	<table border="1"><thead><tr><th>Typical Values</th><th>Per 100g</th></tr></thead><tbody><tr><td>Energy</td><td>517 kJ 122 kcal</td></tr><tr><td>Protein</td><td>14.2g</td></tr><tr><td>Carbohydrate Of which sugars</td><td>14.0g 10.5g</td></tr><tr><td>Fat Of which Saturates</td><td>1.1g 0.0g</td></tr><tr><td>Fibre</td><td>0.7g</td></tr><tr><td>Sodium</td><td>0.56g</td></tr></tbody></table>	Typical Values	Per 100g	Energy	517 kJ 122 kcal	Protein	14.2g	Carbohydrate Of which sugars	14.0g 10.5g	Fat Of which Saturates	1.1g 0.0g	Fibre	0.7g	Sodium	0.56g
Typical Values	Per 100g														
Energy	517 kJ 122 kcal														
Protein	14.2g														
Carbohydrate Of which sugars	14.0g 10.5g														
Fat Of which Saturates	1.1g 0.0g														
Fibre	0.7g														
Sodium	0.56g														
Allergens and special dietary requirements	Product Contains: Although every care has been taken to remove all bones, some small bones may remain.														
DATE CODING INFORMATION:	Use by														
INSTRUCTIONS FOR USE:	Keep Product Refrigerated														
STORAGE CONDITIONS / TEMPERATURE PARAMETERS:	<5°C														

VERSION NO.	PAGE NO.	ISSUE DATE	ISSUED BY	DEPARTMENT
05	Page 2 of 13	26/10/2011	Gemma Wood	Technical



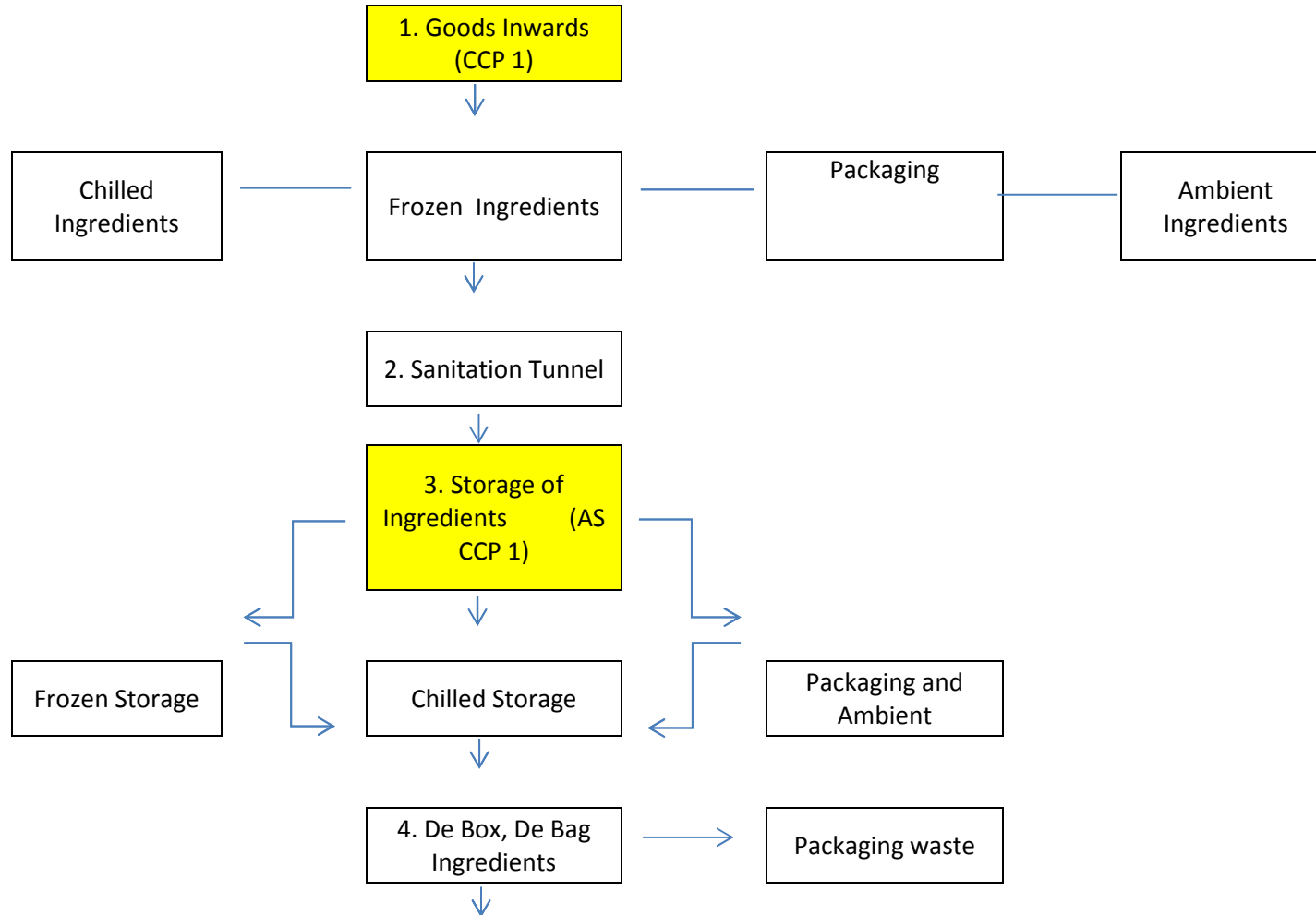
Midland Chilled Foods Ltd Sandwich Filling Specifications

RECIPE INFORMATION

Ingredient	Supplier	Weight (g)	%	Country Of Origin
Sliced Turkey	CONFIDENTIAL	600g	60%	UK.
Cranberry, Sage & Onion Chutney		400g	40%	UK, EU.



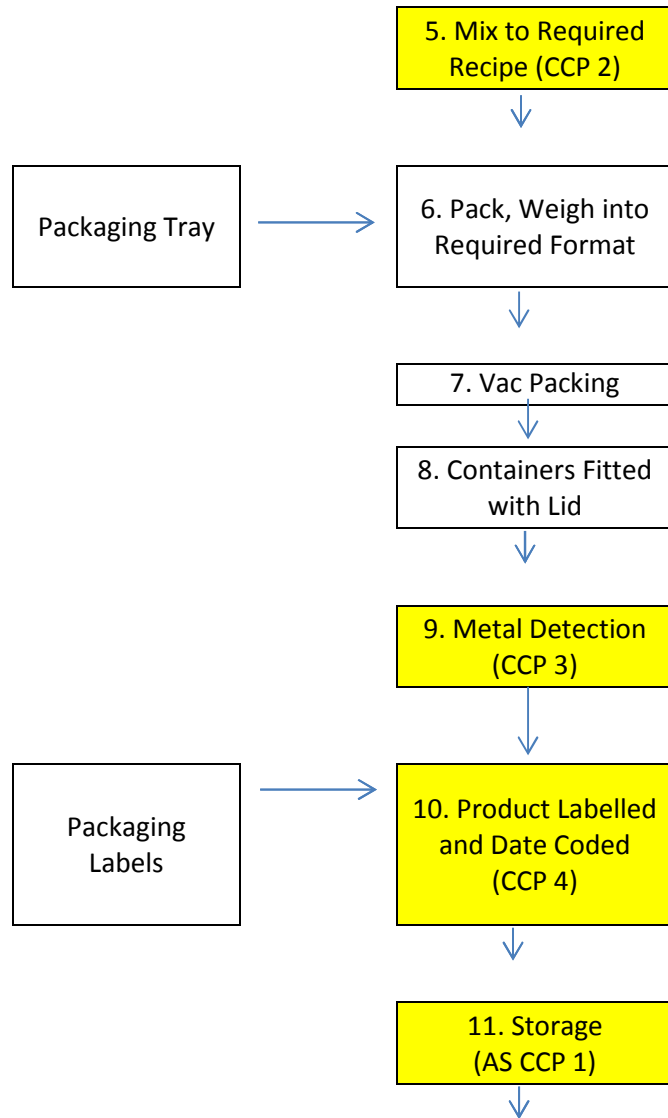
Midland Chilled Foods Ltd Sandwich Filling Specifications



VERSION NO.	PAGE NO.	ISSUE DATE	ISSUED BY	DEPARTMENT
05	Page 4 of 13	26/10/2011	Gemma Wood	Technical



Midland Chilled Foods Ltd Sandwich Filling Specifications



VERSION NO.	PAGE NO.	ISSUE DATE	ISSUED BY	DEPARTMENT
05	Page 5 of 13	26/10/2011	Gemma Wood	Technical



Midland Chilled Foods Ltd Sandwich Filling Specifications

12. Distribution (AS
CCP 1)



Denotes CCP

VERSION NO.	PAGE NO.	ISSUE DATE	ISSUED BY	DEPARTMENT
05	Page 6 of 13	26/10/2011	Gemma Wood	Technical



Midland Chilled Foods Ltd Sandwich Filling Specifications

FINISHED PACK INFORMATION

MINIMUM WEIGHT	1Kg	2Kg	10Kg
NUMBER OF UNITS PER PALLET	450	125	64
LAYERS PER PALLET	5	5	4

PRIMARY CONTACT PACKAGING

Item	Material	Weight	Dimensions
1Kg Tub			
Easypac Tub 1200 TP	Polypropylene	40g	190mmx126mmx63mm
Easypac Lid 1200	Polypropylene	17g	188mmx125mm
2Kg Tub			
Easypac Tub 2400 TP	Polypropylene	60g	160mmx90mm
Easypac Lid 2400	Polypropylene	26g	176mm x10mm
10Kg Tub			
10L Container	Polypropylene Co-Polymer Food Grade	335g	268mmx230mmx265mm
Lid	Polypropylene Co-Polymer Food Grade	64g	283mmx16mm

SECONDARY PACKAGING

Item	Material	Weight	Dimensions

MINIMUM ORDER REQUIREMENTS

N/A

VERSION NO.	PAGE NO.	ISSUE DATE	ISSUED BY	DEPARTMENT
05	Page 7 of 13	26/10/2011	Gemma Wood	Technical



Midland Chilled Foods Ltd Sandwich Filling Specifications

MICROBIOLOGICAL CRITERIA

Tests	Target	Acceptable	Reject
T.V.C	$<10^4$	10^4	$>10^5$
E. coli	<10	10	$>10^2$
S. aureus	<10	10	$>10^2$
Coliforms	$<10^2$	10^2	$>10^3$
Salmonella	Absent in 25g	Absent in 25g	Present in 25g
Listeria	Absent in 25g	Absent in 25g	Present in 25g

ORGANOLEPTIC & PHYSICAL PROPERTIES

FLAVOUR	Typical of cooked turkey breast, free from off flavours or taints with sweet, slightly tart cranberries, pungent onions and fragrant sage.
TEXTURE	Firm but tender turkey with no excessive chewiness or gristle with juicy cranberries, soft onions and coarse flecks of sage.
APPEARANCE	Sliced creamy/off white turkey breast free from bones with deep red cranberries, chopped brown onions and green flecks of sage.
ODOUR	Typical of cooked turkey breast, free from off flavours or taints with sweet, slightly tart cranberries, pungent onions and fragrant sage.

VERSION NO.	PAGE NO.	ISSUE DATE	ISSUED BY	DEPARTMENT
05	Page 8 of 13	26/10/2011	Gemma Wood	Technical



Midland Chilled Foods Ltd Sandwich Filling Specifications

FREE FROM / SUITABILITY INFORMATION:

The Product & Ingredients Used to Manufacture The Product Are:	Delete As Applicable		Comments
Free from Milk or Milk Derivatives	YES		
Free from Lactose	YES		
Free from Egg and Egg Derivatives	YES		
Free from Animal Products		NO	Turkey
Free from Gelatine	YES		
Free from Rennet	YES		
Free from Beef & Beef Bi-products – Country of origin required.	YES		
Free from Offal	YES		
Free from Bovine Collagen & Protein Extracts	YES		
Free from Beef Fat & Suet	YES		
Free from Beef Stock and Extracts	YES		
Free from MRM (Mechanically Recovered Meat)	YES		
Free from Pork & Pork Products- Country of origin required.	YES		
Free from Fish, Crustaceans, Molluscs and their Derivatives	YES		
Free from BHA / BHT	YES		
Free from Azo Colours and Coal Tar Dyes	YES		
Free from Wheat & Wheat Derivatives	YES		
Free from Barley	YES		
Free from Oats spelt	YES		
Free from Rye	YES		
Free from Karmut	YES		
Free from Lupin	YES		
Free from Hybrid Strains	YES		
Free from Gluten	YES		
Free from Glutamates e.g. MSG	YES		
Free from Benzoates	YES		
Free from Sulphites	YES		
Free from Nuts, Nut Oils & Nut Derivatives	YES		
Free from Sesame Seeds and Derivatives	YES		
Free from Soya and Soya Derivatives	YES		
Free from Maize		NO	Turkey Breast + Cranberry, Sage & Onion Chutney – Modified Maize Starch.
Free from Maize Derivatives		NO	Turkey Breast + Cranberry, Sage & Onion Chutney – Modified Maize Starch.
Free from Hydrogenated Vegetable Protein or Derivatives	YES		
3-MCPD (3-Monochloropropane-1, 2-diol) <10ppb Confirmed by Analysis	YES		
Free from Fruit & Fruit Derivatives		NO	Cranberry, Sage & Onion Chutney – Cranberries.
Free from Vegetable & Vegetable Derivatives		NO	Cranberry, Sage & Onion Chutney – Onion.
Free from Yeast & Yeast Derivatives	YES		
Free from Garlic		NO	Cranberry, Sage & Onion Chutney –

VERSION NO.	PAGE NO.	ISSUE DATE	ISSUED BY	DEPARTMENT
05	Page 9 of 13	26/10/2011	Gemma Wood	Technical



Midland Chilled Foods Ltd Sandwich Filling Specifications

			Garlic.
Free from Honey	YES		
Free from Shellac	YES		
Free from Aspartame	YES		
Free from Celery / Celeriac	YES		
Free from Mustard	YES		
Free from Latex	YES		
Free from Artificial Colours	YES		
Free from Artificial Flavours	YES		
Free from Added Salt		NO	Turkey + Cranberry, Sage & Onion Chutney.
Free from Added Sugar		NO	Cranberry, Sage & Onion Chutney.
Free from Additives		NO	Turkey – Thickener: E1422 (from Maize), Emulsifiers: E407, E451, Cranberry, Sage & Onion Chutney – Thickener: E1422 (from Maize).
Free from Irradiated Foodstuffs	YES		
Free from Genetically Modified Organisms	YES		
Suitable for Vegetarians		NO	
Suitable for Ova Lacto Vegetarians		NO	
Suitable for Vegans		NO	
Suitable for Coeliacs	YES		
Suitable for Lactose Intolerance	YES		
Suitable for Nut Allergy Suffers		NO	Although Nuts are not directly handled on site we are unable to guarantee that all products are nut free.



Midland Chilled Foods Ltd Sandwich Filling Specifications

GENETICALLY MODIFIED ORGANISM INFORMATION

Does the product or any of its ingredients contain any genetically modified material whether viable or not?		NO
Is the material or any of the processing aids produced from genetically modified material, whether viable or not?		NO
Has the material or any of the processing aids been significantly changed as a result of genetic modification?		NO
Have genetically modified organisms been used as processing aids or additives or to produce processing aids or additives used in connection with the production of the food or any of its ingredients?		NO
Does the product or any of its ingredients contain Soya or maize?	YES	
If the product or any of its ingredients does contain Soya or maize is it from a GMO free source?	YES	
Does the product or any of the product ingredients contain, or is it produced using any potential derivatives of Soya or maize e.g. Soya bean oil, lecithin, glucose, maltodextrin, ascorbic acid, citric acid etc?	YES	
If the product or any of its ingredients is produced using any of the above is it from a GMO free source?	YES	
Can you trace back to the source to confirm Genetically Modified Maize?	N/A	
Can you trace back to the source to confirm Non-Genetically Modified Maize?	YES	
Can you trace back to the source to confirm Non-Genetically Modified Soya?	N/A	
Can you trace back to the source to confirm Genetically Modified Soya?	N/A	

VERSION NO.	PAGE NO.	ISSUE DATE	ISSUED BY	DEPARTMENT
05	Page 11 of 13	26/10/2011	Gemma Wood	Technical



Midland Chilled Foods Ltd Sandwich Filling Specifications

Please list all ingredients and provide full details of Maize or Maize derivatives, Soya or Soya derivatives used in the product including country of origin, source and traceability

INGREDIENTS	SUPPLIER SITE	COUNTRY OF ORIGIN	TRACEABILITY
Cranberry, Sage & Onion Chutney <ul style="list-style-type: none">Modified Maize Starch	Confidential	UK.	YES.
Sliced Turkey <ul style="list-style-type: none">Modified Maize Starch		UK, EU.	YES.



Midland Chilled Foods Ltd Sandwich Filling Specifications

LEGAL DECLARATION / WARRANTY

Under the agreement no changes may be made to this ingredient specification without prior notification and agreement with Midland Chilled Foods Ltd.

This product, packaging and production factory comply with current U.K and E.U. regulations/legislation and relevant codes of practice.

The packaging materials comply with all current U.K and E.U regulations/legislation relating to materials and articles in contact with food.

This specification is to remain the property of Midland Chilled Foods Ltd and is not to be shown to any unauthorised party.

SPECIFICATION AND WARRANTY AGREED

FOR SUPPLIER

.....NAME

.....SIGNATURE

.....POSITION

..... DATE

MIDLAND CHILLED FOODS LTD

..... TECHNICAL DEPARTMENT

.....DATE

...*Gemma Wood*.....SPECIFICATIONS TECHNOLOGIST

.....11.11.2011.....DATE

VERSION NO.	PAGE NO.	ISSUE DATE	ISSUED BY	DEPARTMENT
05	Page 13 of 13	26/10/2011	Gemma Wood	Technical