

Changed Oct 31, 2025 16:18

Reviewed Oct 31, 2025 16:18

Erudus ID fc7458ae37c149f79405b68b6e19a62b

Version 7.0

Status Published

9904 23219

Brimble's Vanilla Flavoured Ice Cream 6 x 4 Litre

Vanilla Flavoured Ice Cream

PRODUCT DESCRIPTION

Vanilla Flavoured Ice Cream

Brand	Brimble's
Manufacturer Product Code	BVAN4
Product Type	Food
Product Category	Ice Cream
Storage Type	Frozen
Erudus ID	fc7458ae37c149f79405b68b6e19a62b
Specification Type	Dairy



Inner Component GTIN	5060012790806
Outer Case GTIN	5060012790790



INGREDIENTS

Ingredient Declaration
Water, Sugar, MILK solids (7%), Vegetable oil (Sustainable palm), Whey powder (MILK), Emulsifier: Mono- and Diglycerides of Fatty Acids, Stabilisers: Guar Gum, Carrageenan, Locust Bean Gum, Humectant: Vegetable glycerine, Flavouring, Colours: Curcumin, Annatto norbixin

ALLERGENS

<i>Product Contains:</i>			
Celery/Celeriac	No	Mustard	No
Cereals Containing Gluten	No	Nuts (Tree)	No
Barley	No	Almond nuts	No
Oats	No	Brazil nuts	No
Rye	No	Cashew nuts	No
Wheat (including Spelt and Khorasan)	No	Hazelnuts	No
Crustacea	No	Macadamia (Queensland) nuts	No
Eggs	No	Pecan nuts	No
Fish	No	Pistachio nuts	No
Lupin	No	Walnuts	No
Milk	Yes	Peanuts	No
Molluscs	No	Sesame Seeds	No
		Soybeans	No
		Sulphur Dioxide and Sulphites	No

SUPPLEMENTARY
INGREDIENT
INFORMATION

Palm Oil	Yes
Hydrogenated Vegetable Oil/Fat	No
GM Protein/DNA	No

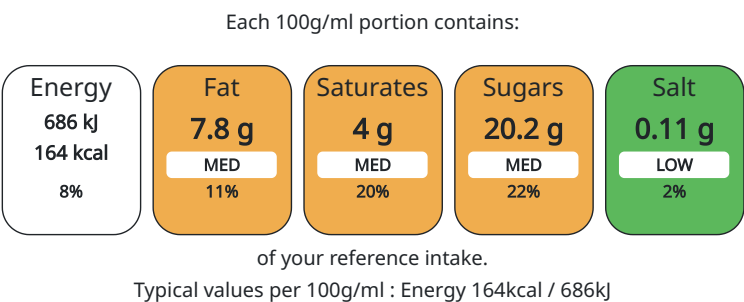
ADDITIVES

<i>Product Contains:</i>			
Artificial Antioxidants	No	Artificial Flavourings	Yes
Artificial Colours	No	Artificial Preservatives	No
Artificial Flavour Enhancers	No	Artificial Sweeteners	No

DIET SUITABILITY

Vegetarian Diet	Suitable for	Halal Diet	Certified
-----------------	--------------	------------	-----------

NUTRITIONAL
INFORMATION AS
SOLD



Nutrient	per 100g	RI per 100g
Energy (kJ)	686 kJ	8%
Energy (kcal)	164 kcal	8%
Fat	7.8 g	11%
of which Saturates	4 g	20%
Carbohydrate	20.9 g	8%
of which Sugars	20.2 g	22%
Protein	2.8 g	6%
Salt	0.11 g	2%

HFSS (HIGH IN
FAT, SALT AND
SUGAR)

Source of Nutritional Information	Calculation based on known values of ingredients
HFSS Status	Yes
HFSS Score	9

HANDLING &
STORAGE
INFORMATION

Directions For Use	
Keep frozen	
Storage Instructions	
Store at or below -18 C.	
Storage Instructions After Opening	
Do not refreeze once thawed	
Shelf Life from Time of Production	730 Days

ACCREDITATIONS/
CERTIFICATIONS/
ASSURANCE
SCHEMES
ORIGIN

B Corp Certification	BRCGS Certified
BRCGS Start!	Sedex
Product Country of Origin	United Kingdom
Origin of the Primary Ingredient	United Kingdom

PRODUCT
CHARACTERISTICS

Standards Testing			
Do you undertake trend analysis of microbiological results?	Yes	Is shelf life testing undertaken?	Yes
		Commercially Sterile	No

	Microbiological Standards					
	Organism	Description	Frequency	Target	Maximum	Sample (g or ml)
	Enterobacteriaceae (cfu/g or ml)		Annually	<100	10000	1
	E. Coli (cfu/g or ml)		Annually	<20	100	1
	Staphylococcus Aureus (cfu/g or ml)		Annually	<20	100	1
	Salmonella (cfu/g or ml)		Annually	=0	0	25
	Listeria SPP (cfu/g or ml)		Annually	=0	0	25
	Aerobic Colony Count (ACC) (cfu/g or ml)		Annually	<100000	500000	1
	Bacillus Cereus (cfu/g or ml)		Annually	<1000	100000	1
	SUPPLEMENTARY INFORMATION					
	Milk Type	Cow	Pasteurised			Yes
	ORGANOLEPTICS					
	Appearance					
	Pale cream / yellow in colour.					
	Aroma					
	Creamy with a hint of vanilla.					
	Taste					
	Creamy with sweet notes, typical of vanilla.					
	Texture					
	Smooth and creamy mouthfeel.					
	HAZARD CONTROLS					
	Metal Detection	Yes				
	Case Configuration			Inner Pack Configuration		
	Variable Inner Components in Outer Case	No				
	Total Quantity of Inner Components in Outer Case	6 Units				
	Is the Outer Case Splittable?	No				
	Inner Component					
	Variable Weight Consumer Item	Yes				
	Inner Component Volume	4 litre				
	e mark	No				
	Outer Case					
	Outer Case Gross Weight	10.48 kg				
	Outer Case Net Weight	9.46 kg				
	Inner Component					
	Inner Component Depth	165 mm				
	Inner Component Width	227 mm				
	Inner Component Height	158 mm				
	Outer Case					
	Outer Case Depth	505 mm				
	Outer Case Width	230 mm				
Outer Case Height	291 mm					

PALLET INFORMATION	Quantity of Cases Per Pallet Layer		10 Cases		Pallet Type		UK Standard Pallet	
	Quantity of Layers Per Pallet		5 Layers		Pallet Height		1.7 MTR	
	Quantity of Cases Per Pallet		50 Cases					
PACKAGING	Inner Component Packaging							
	Type	Materials	Weight	Recycled Material %	Recyclable	Returnable	Composite	
	Tub	Plastic / PP (Polypropylene)	93 g	0 %	Yes	No	No	
	Lid	Plastic / PP (Polypropylene)	29 g	0 %	Yes	No	No	
	Label	Paper/Cardboard / Paper	2 g		Yes	No	No	
	Outer Case Packaging							
	Type	Materials	Weight	Recycled Material %	Recyclable	Returnable	Composite	
	Case	Paper/Cardboard / Corrugated	281 g		Yes	No	No	
	Transport Packaging							
	Type	Materials	Weight	Recycled Material %	Recyclable	Returnable	Composite	
	Pallet Wrap	Plastic / PE (Polyethylene)	250 g	0 %	No	No	No	
	Pallet	Wood	25000 g		Yes	No	No	
	OTHER INFORMATION CONTACT INFORMATION				Identification/Health Marks		GB TB 013	
Address			Technical					
Marshfield Farm Ice Cream Limited			Technical Team					
Marshfield			technical@marshfield-icecream.co.uk					
SN14 8LE			01225 891221					
Nr Bath			Technical Team					
Wiltshire								
United Kingdom			Complaints					
			Technical Team					
			technical@marshfield-icecream.co.uk					
katie@marshfield-icecream.co.uk			01225 891221					
01225 891221			Technical Team					

The information on the [Erudus System](#) has been supplied by the manufacturers of the products and, whilst the owners of the Erudus System take steps to ensure the information is regularly updated, they give no warranty and no guarantee that the information is accurate. Product information and ingredients may change, please always read product labels carefully in addition to using the information provided by Erudus.

We do not accept liability for any inaccuracies or incorrect information contained on this site.
Please visit <http://www.erudus.com/terms-and-conditions> for full terms and conditions.